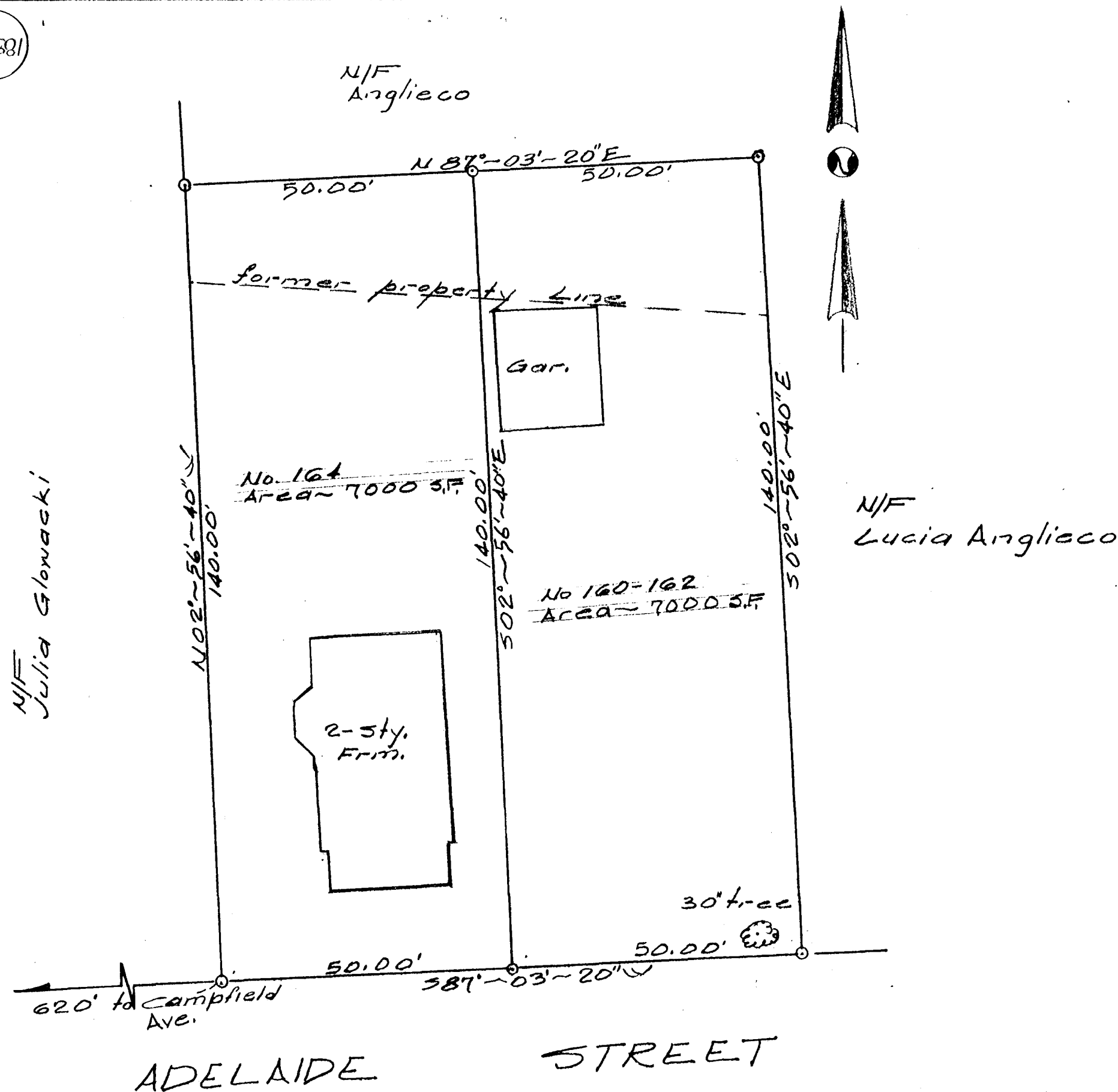


188/52



I HEREBY CERTIFY THAT THIS MAP IS SUBSTANTIALLY CORRECT. THIS MAP AND SURVEY WERE PREPARED IN ACCORDANCE WITH THE STANDARDS OF A CLASS A-2 SURVEY AS DEFINED IN THE "RECOMMENDED STANDARDS FOR SURVEYS AND MAPS IN THE STATE OF CONNECTICUT" AS PREPARED AND ADOPTED BY THE CONNECTICUT ASSOCIATION OF LAND SURVEYORS, INC.

O. Blint

CITY OF HARTFORD, CONNECTICUT
DEPARTMENT OF PUBLIC WORKS
BUREAU OF ENGINEERING SERVICES

PLAN OF
160-162 & 164 ADELAIDE
STREET
HARTFORD, CONNECTICUT

SUBMITTED <i>O. Blint</i> PROJECT ENGINEER	RECOMMENDED DIVISION MANAGER	APPROVED CITY ENGINEER ESB
--	---------------------------------	-------------------------------

DRAWN <i>OB</i> CHECKED	SCALE 1" = 20'	DAYBOOK NO. 20012 DATE 02-03-93
----------------------------	-------------------	------------------------------------

188/52

188/52