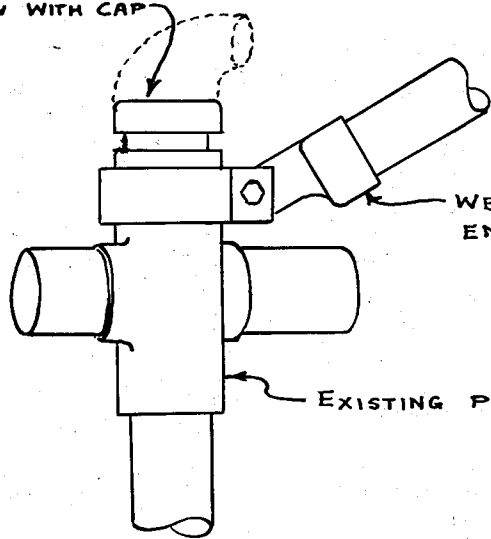


~ PERSPECTIVE VIEW ~  
NO SCALE

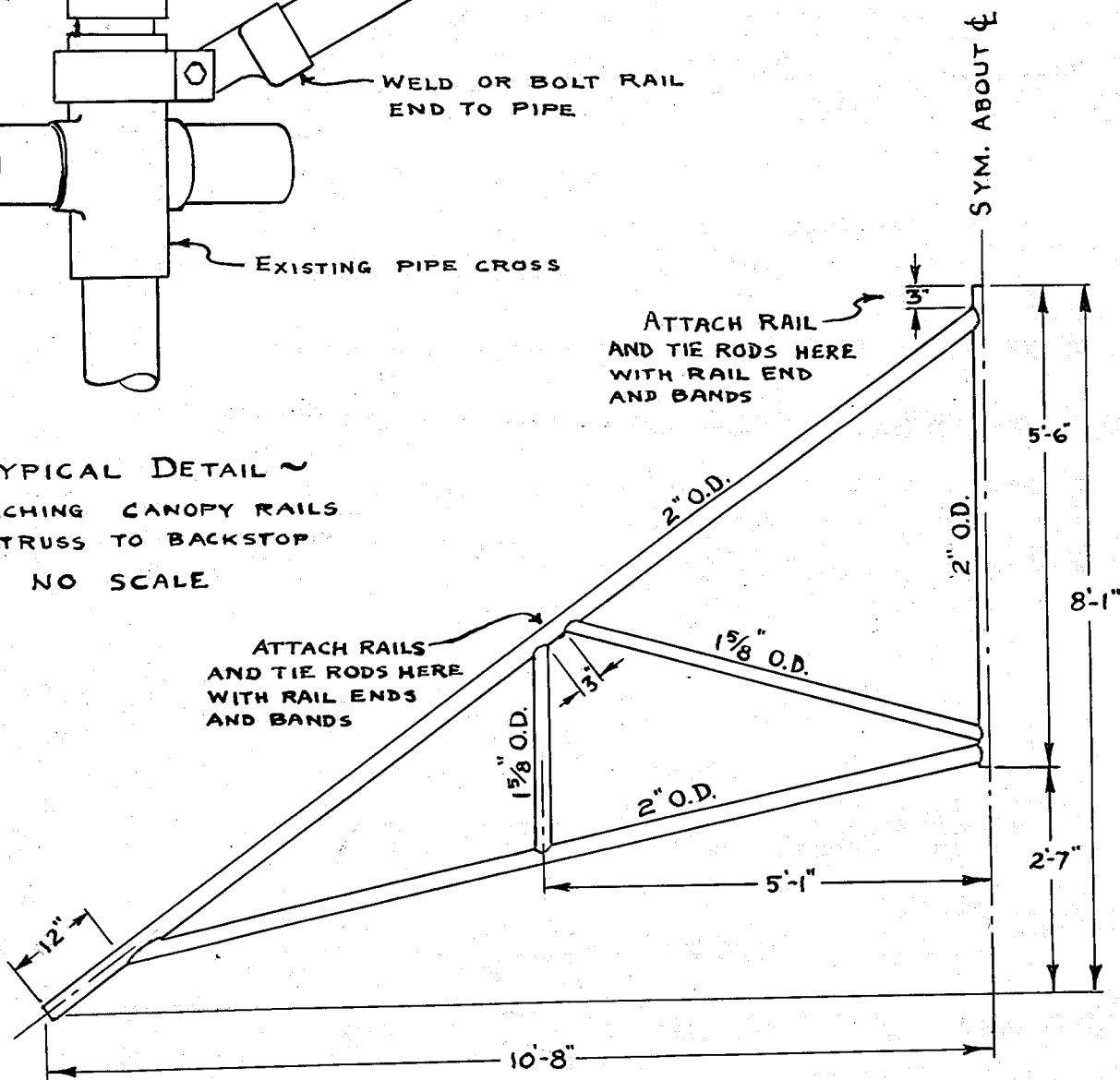
NOTE:

ALL NEW AND EXISTING  
FABRIC ON CANOPY AND  
BACKSTOP SHALL BE TIED AND  
RETIED TO ALL FRAME  
MEMBERS AND TIE RODS AT  
12" INTERVALS.

REPLACE EXISTING  
ELBOW WITH CAP



~ TYPICAL DETAIL ~  
ATTACHING CANOPY RAILS  
AND TRUSS TO BACKSTOP  
NO SCALE



~ WELDED TRUSS DETAIL ~  
SCALE ~ 1/2" = 1'-0"

~ ARSENAL SCHOOL PLAYGROUND ~  
NEW CANOPY ON EXISTING  
BACKSTOP

(LOCATED AT NORTHWEST  
CORNER OF PLAYGROUND  
ON MAIN STREET.)

CITY OF HARTFORD  
DEPARTMENT OF ENGINEERING  
OCTOBER 1962 DAYBOOK No.09740