

INTERSECTION
OF
FAIRFIELD AND NEW BRITAIN AVE.

SCALE 1" = 40'

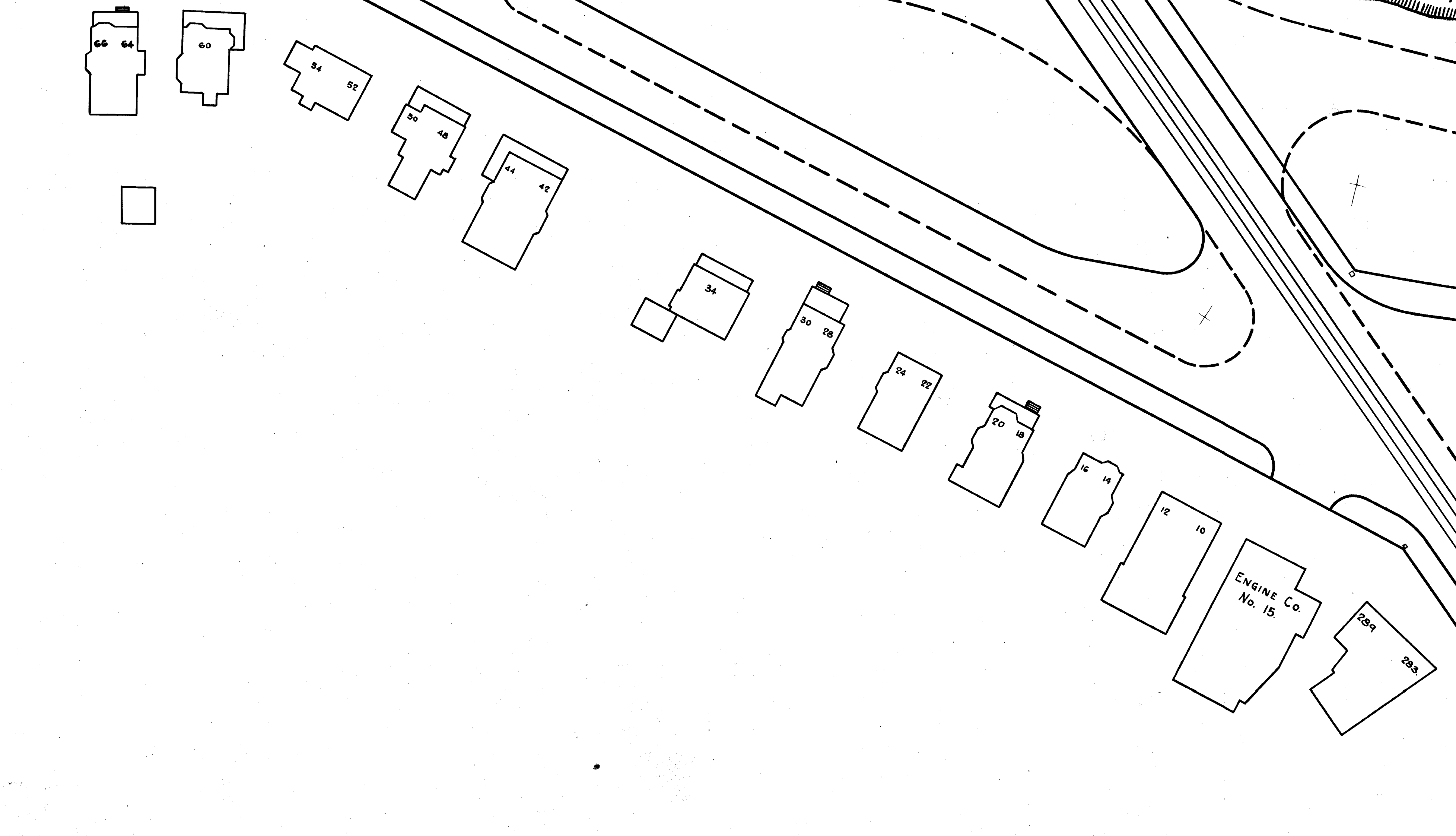
ROCKY RIDGE PARK.

NEW BRITAIN AVE.

FAIRFIELD AVE.

CLIFF

SUMMIT ST.



CITY OF HARTFORD.
DEPARTMENT OF ENGINEERING.
OCTOBER 1934. DAYBOOK No. 07383.