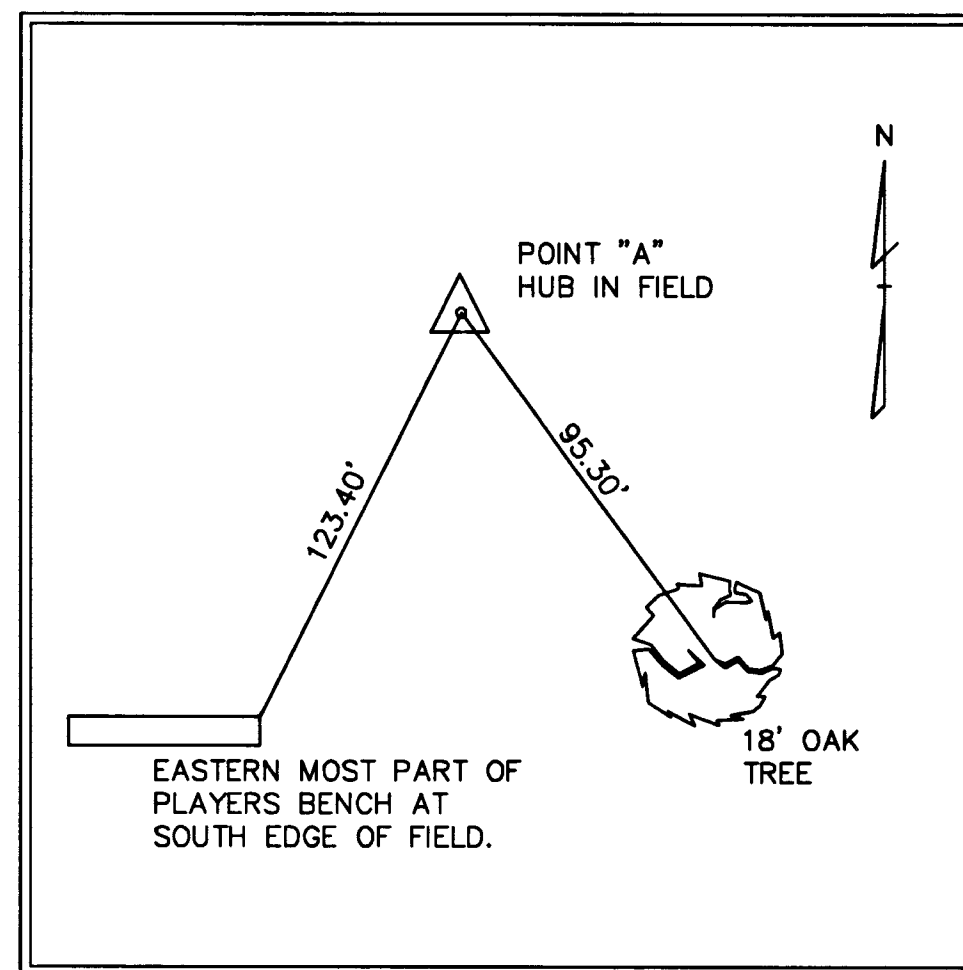
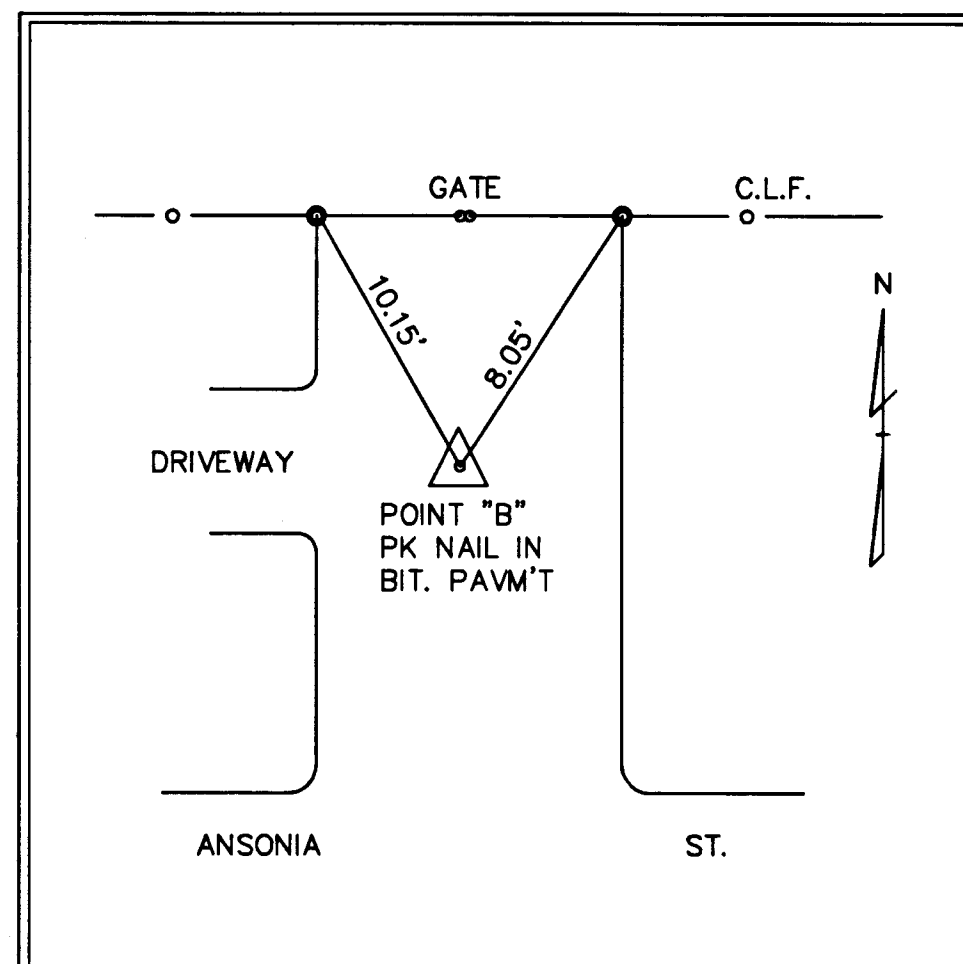


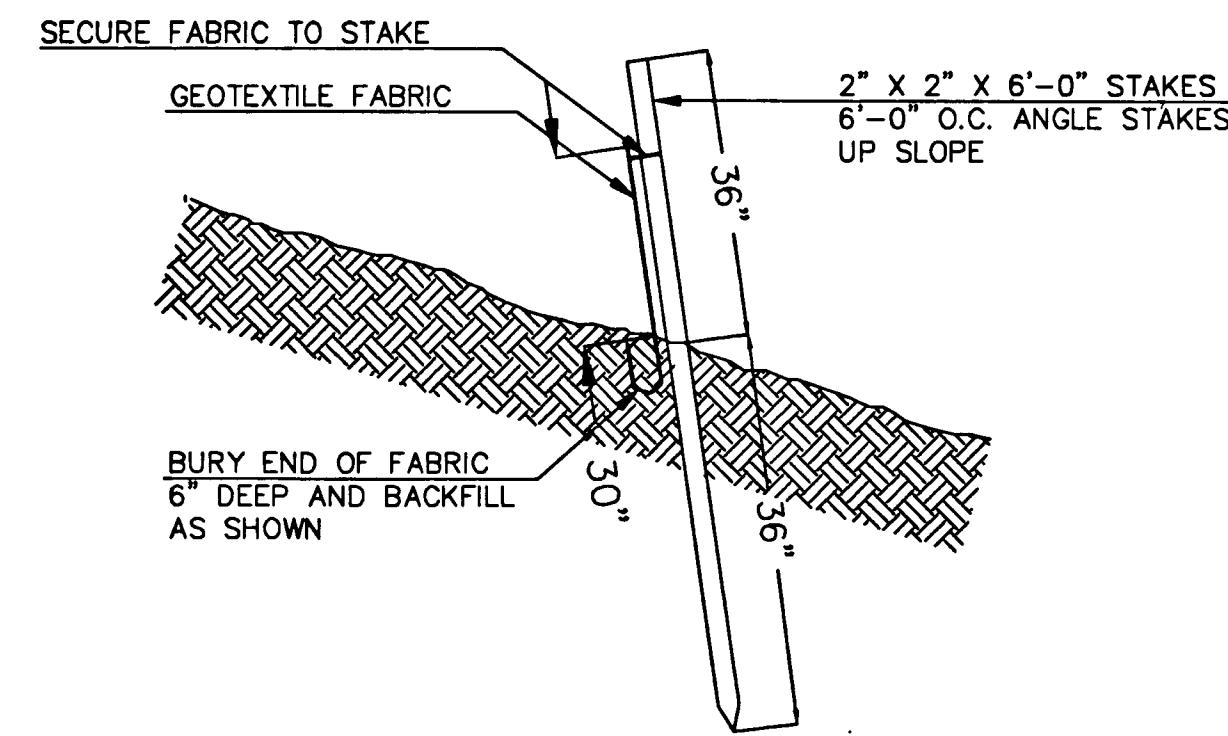
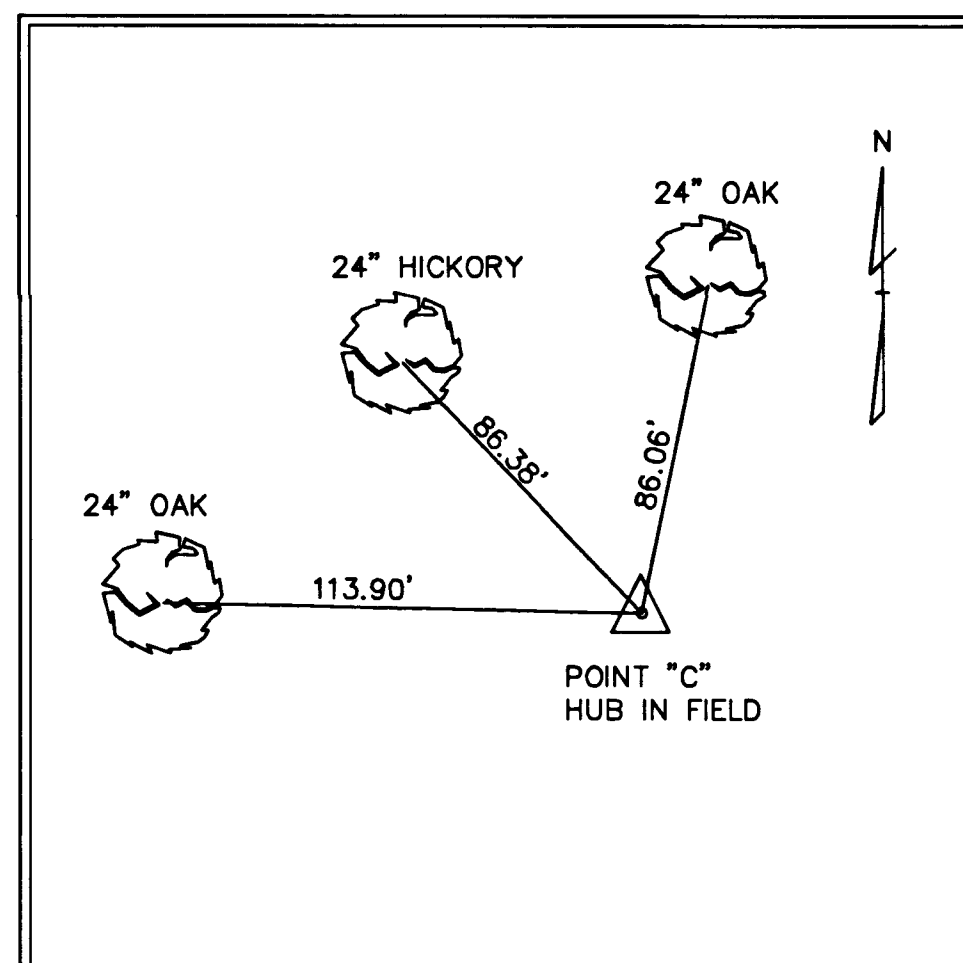
CONTROL POINT "A" (N.T.S.)



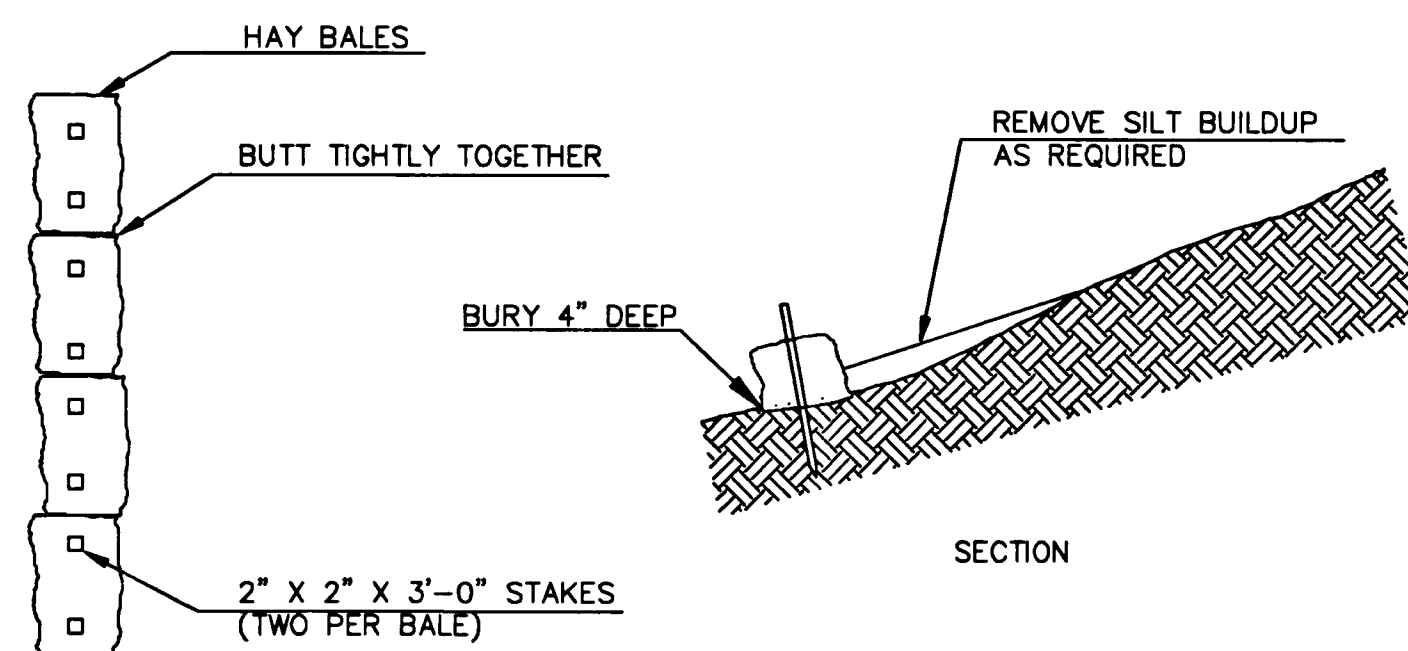
CONTROL POINT "B" (N.T.S.)



CONTROL POINT "C" (N.T.S.)

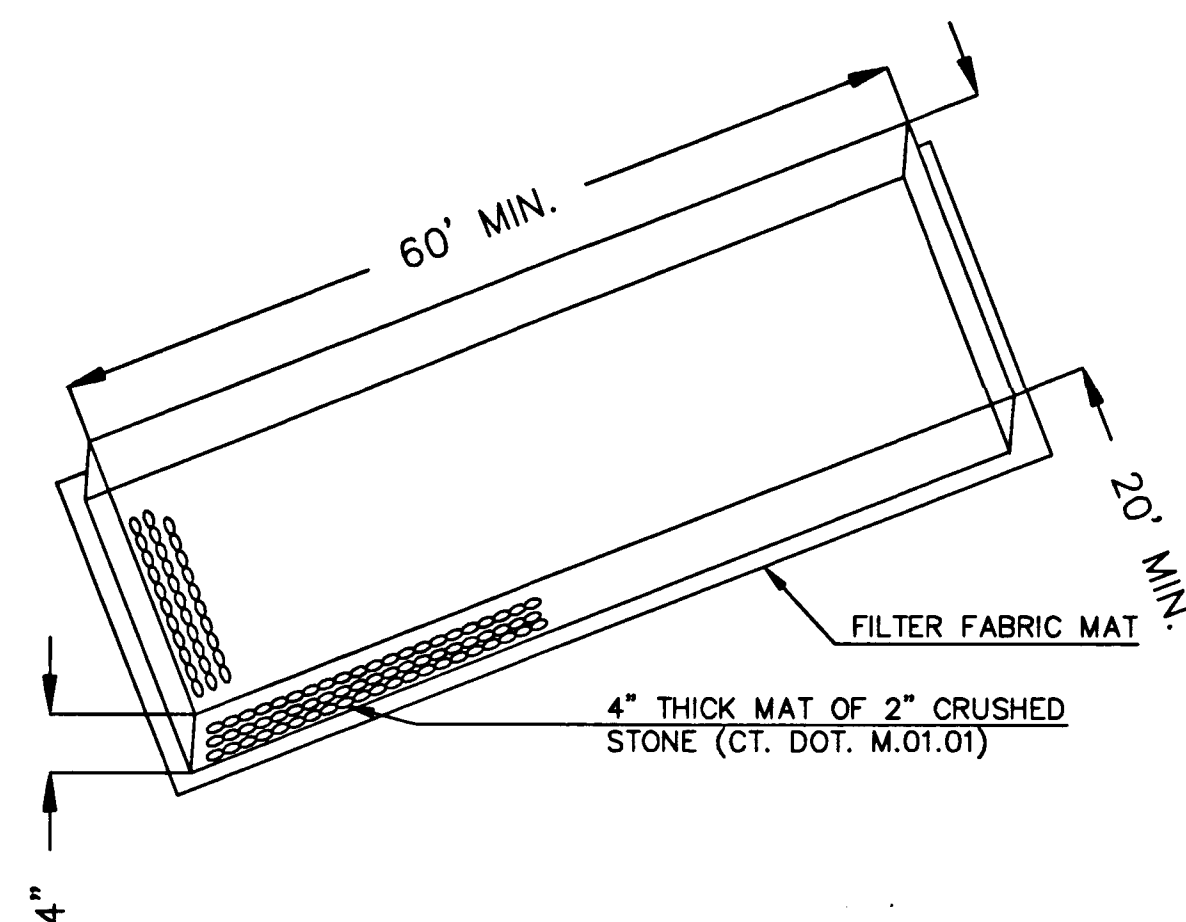


SILT FENCE DETAIL  
N.T.S.



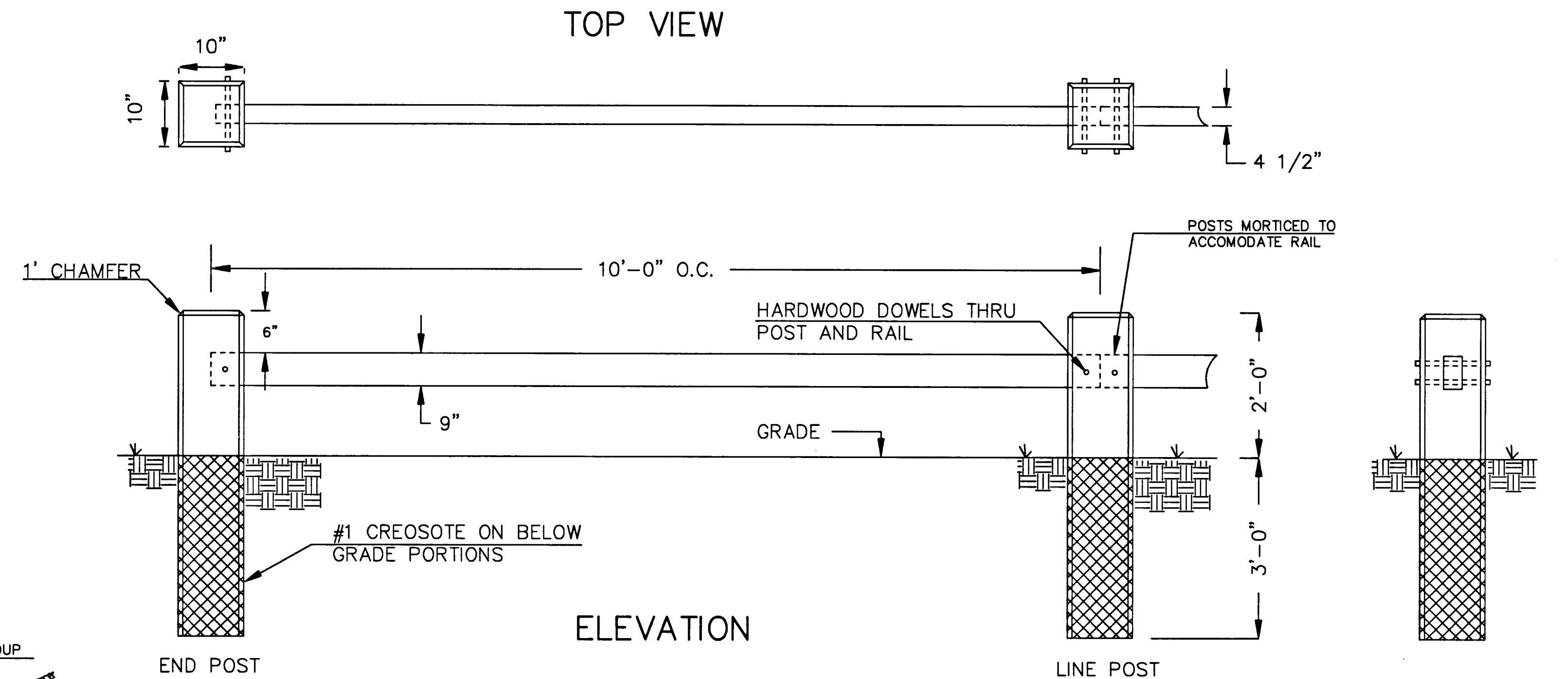
PLAN

HAY BALE DAM  
N.T.S.

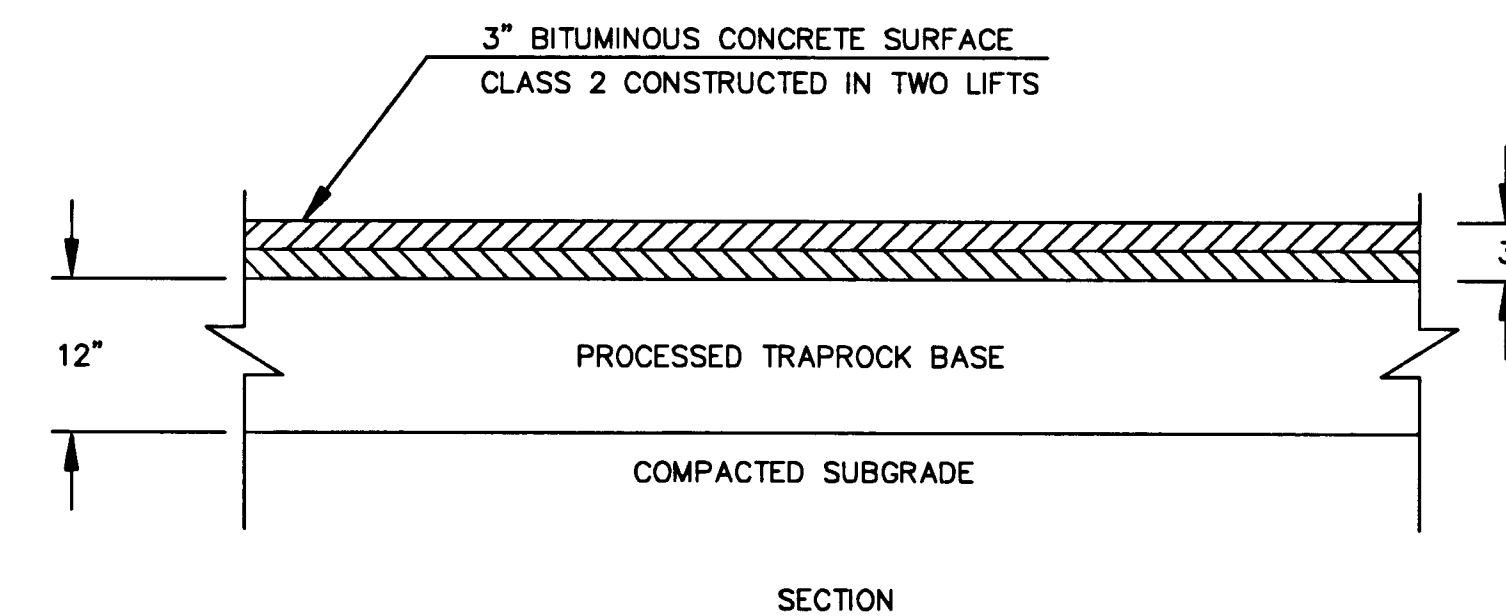


TEMPORARY CONSTRUCTION ENTRANCE  
N.T.S.

DECORATIVE WOOD FENCE  
(TYPE "S" GUIDE RAIL)  
N.T.S.



NOTE:  
POSTS AND RAILS TO BE #2 OR BETTER WESTERN RED CEDAR.  
ROUGH SAWN SURFACE TEXTURE. PROPOSED STAIN TO BE DARK  
BROWN WOODLIFE PRESERVATIVE.



BITUMINOUS CONCRETE PARKING LOT  
AND DUGOUT AREA  
N.T.S.

APPROVED: *[Signature]*  
CITY OF HARTFORD PARKS AND RECREATION DEPT. DATE: 5-28-90

CITY OF HARTFORD, CONNECTICUT  
DEPARTMENT OF PUBLIC WORKS  
BUREAU OF ENGINEERING SERVICES

STANDARD CONSTRUCTION DETAILS  
FOR  
THOMAS J. HYLAND MEMORIAL PARK

SUBMITTED BY: <i>[Signature]</i> PROJECT ENGINEER	RECOMMENDED BY: <i>[Signature]</i> DIVISION MANAGER	APPROVED BY: <i>[Signature]</i> CITY ENGINEER
---------------------------------------------------------	-----------------------------------------------------------	-----------------------------------------------------

SHEET 1 OF 11	DRAWN: JLB CHECKED: _____	SCALE AS NOTED	DAYBOOK NO. 011203-A DATE: MAY, 1990 FILE NAME: HYMSC.DWG
------------------	------------------------------	-------------------	-----------------------------------------------------------------