

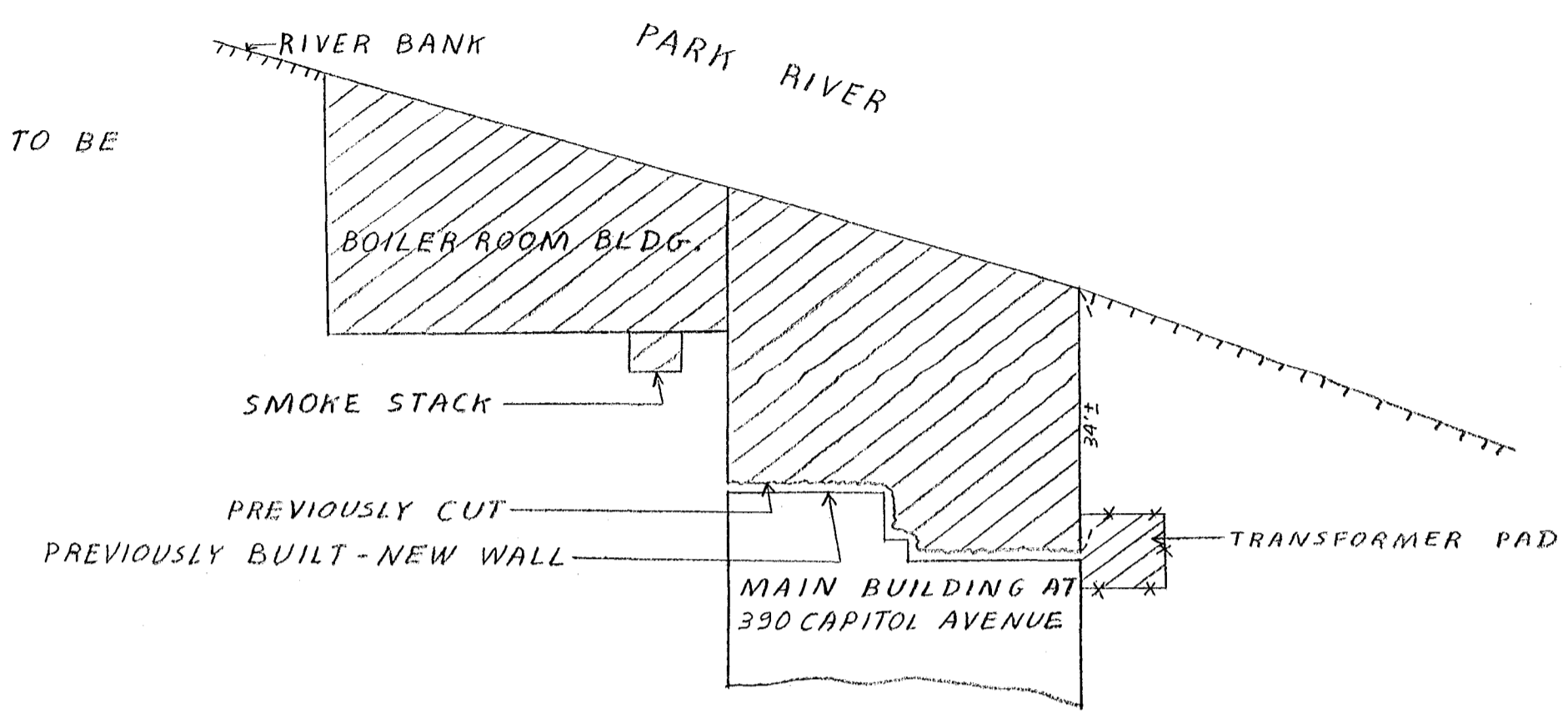
PLAN SHOWING  
STRUCTURES TO BE DEMOLISHED

IN THE REAR OF  
380 - 400 CAPITOL AVENUE / 1-7 FLOWER STREET

SUBMITTED <i>W. J. S. G. S.</i> DIVISION ENGINEER	RECOMMENDED <i>Russell E. Boeg</i> CHIEF OF ENG. SERV.	APPROVED <i>George E. Hopper</i> ASST. DIR. & CITY ENG.
SCALE 1" = 20'	DAYBOOK NO. 010538	DATE JANUARY, 1976

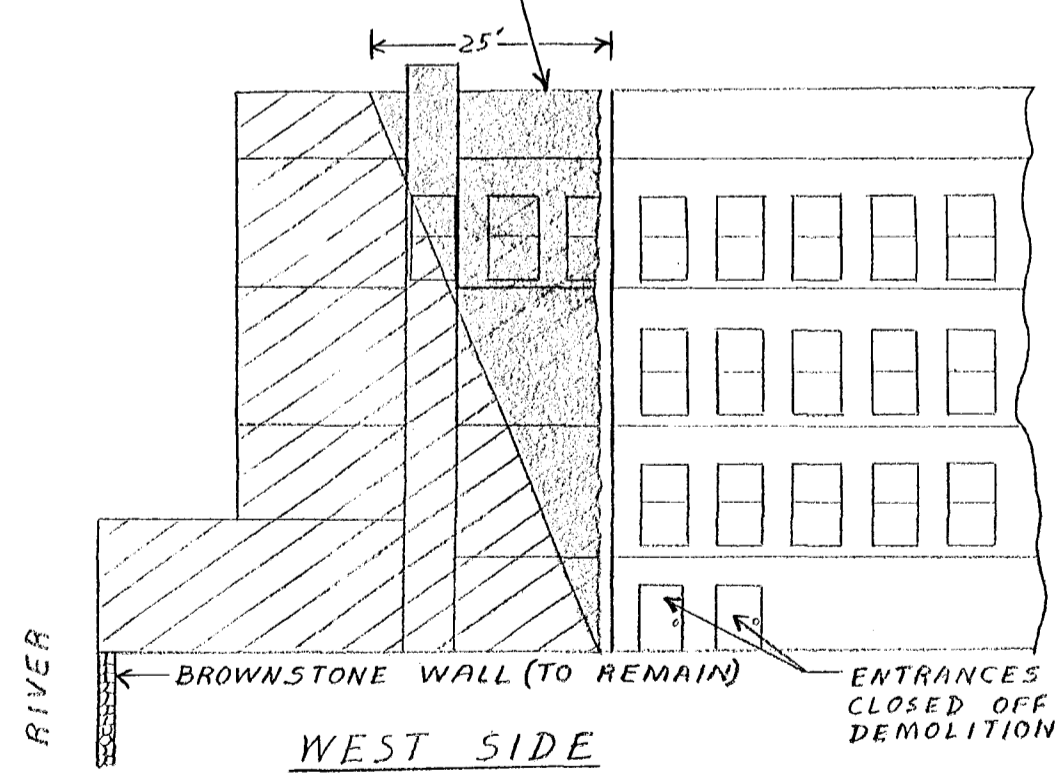
CONTRACT NO. E76-21 SHEET NO. 2 of 2

NOTE:  
CROSSHATCHED STRUCTURES TO BE  
DEMOLISHED

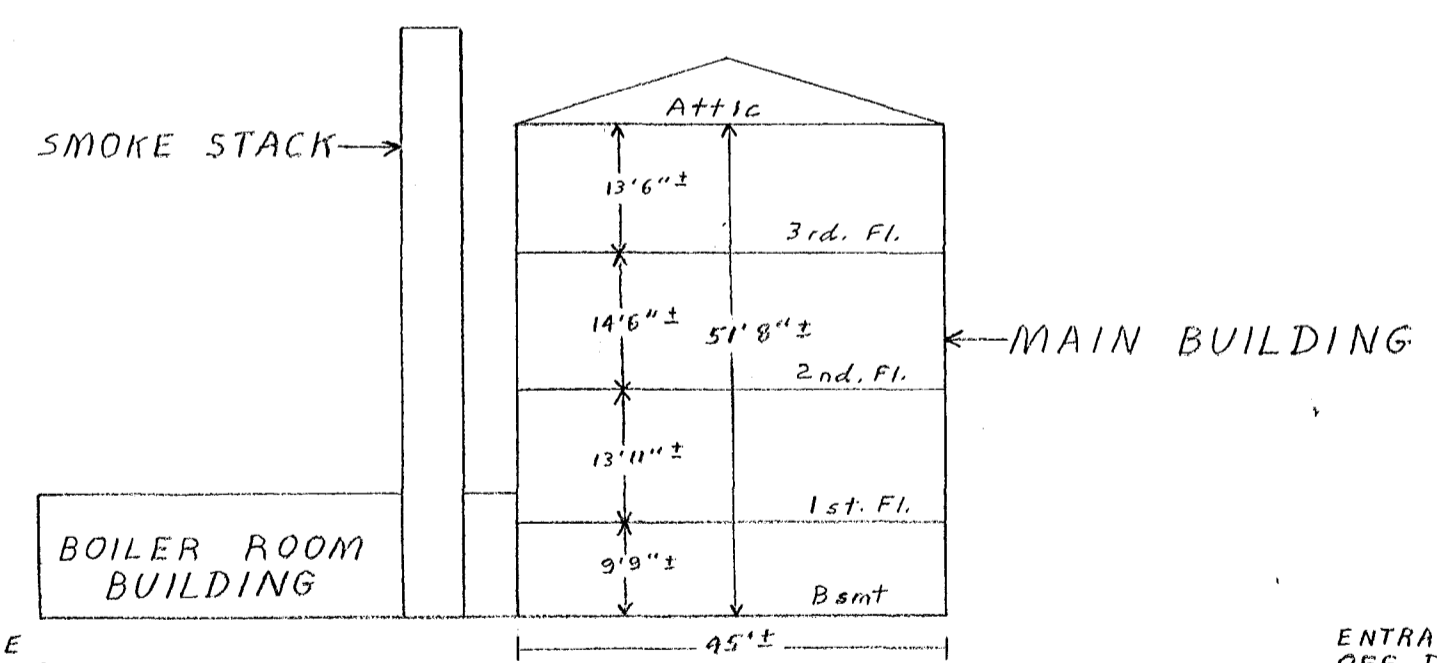


PLAN VIEW

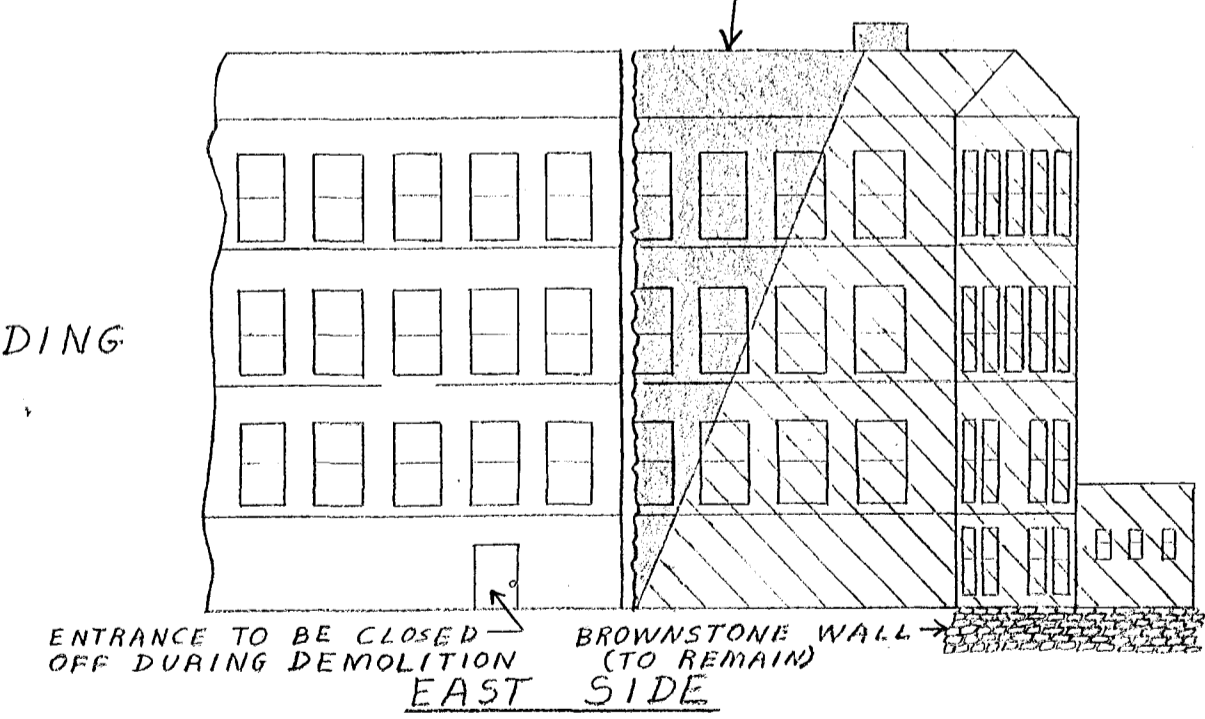
HAND DEMOLISH TO A SAFE DISTANCE FROM THE REMAINDER OF THE MAIN BUILDING. A SAFE DISTANCE SHALL BE AT LEAST 2/5 THE HEIGHT OF THE PORTION TO BE DEMOLISHED.  
SHADED PORTION IS TO BE HAND DEMOLISHED.



WEST SIDE



FRONT VIEW



EAST SIDE