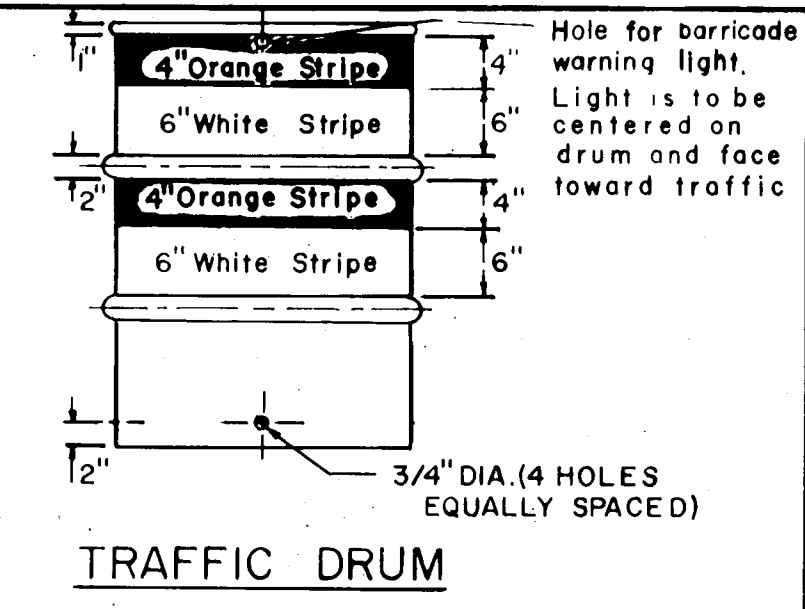


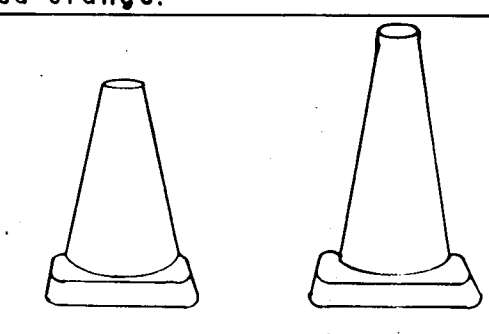
PORTABLE SIGN SUPPORTS

- NOTES:
- Sign supports shall be constructed of a suitable material. Break-away and/or collapsible features shall be incorporated in the design so that the support will not constitute a hazard to the motorist and/or workmen in the work area.
  - Mounting height of sign utilizing structures depicted above shall be a minimum of 12', with a recommended height of 18' above pavement.
  - The Engineer reserves the right to reject any support which he deems a hazard, or not in the best interest of the motoring public.
  - Flags and/or barricade warning lights shall be used as shown on the Traffic Control Plans and as directed by the Engineer.



TRAFFIC DRUM

- NOTES:
- Traffic drum shall be designed in accordance with the specifications.
  - The Engineer reserves the right to reject any drum he deems not suitable for purpose intended.
  - The entire area of orange and white stripes shall be Reflective Sheeting-Encapsulated Lens.
  - Reflectorized stripes should not be placed over the protruding circumferential ribs of the drum.
  - The sections of drums not covered with reflectorized stripes shall be painted orange.



TRAFFIC CONES

- NOTES:
- Traffic cones shall be designed in accordance with the Manual on Uniform Traffic Control Devices, Chapter XII, Section 6C-3, Cone Design.
  - Height of cones shall be 18" or 28" as specified.
  - Cones shall be predominately federal orange in color.
  - Rubber cones shall be reflectorized with interior ribs for rigidity.
  - Plastic cones shall be color impregnated.
  - Cones shall be of a thickness necessary to withstand impact without damage to either cone or impacting vehicle.
  - The Engineer reserves the right to reject any cone he deems not suitable for purpose intended.

SERIES 16 SIGNS

**CAUTION**  
ROAD LEGALLY CLOSED  
UNDER CHAPTER 238 SECT. 13a-115, 13a-145  
CONNECTICUT GENERAL STATUTES  
PASS AT YOUR OWN RISK  
COMMISSIONER OF TRANSPORTATION

	HORIZ.	VERT.
16 B	60"	48"
16 A	48"	36"
16 D	24"	18"

48" 36"

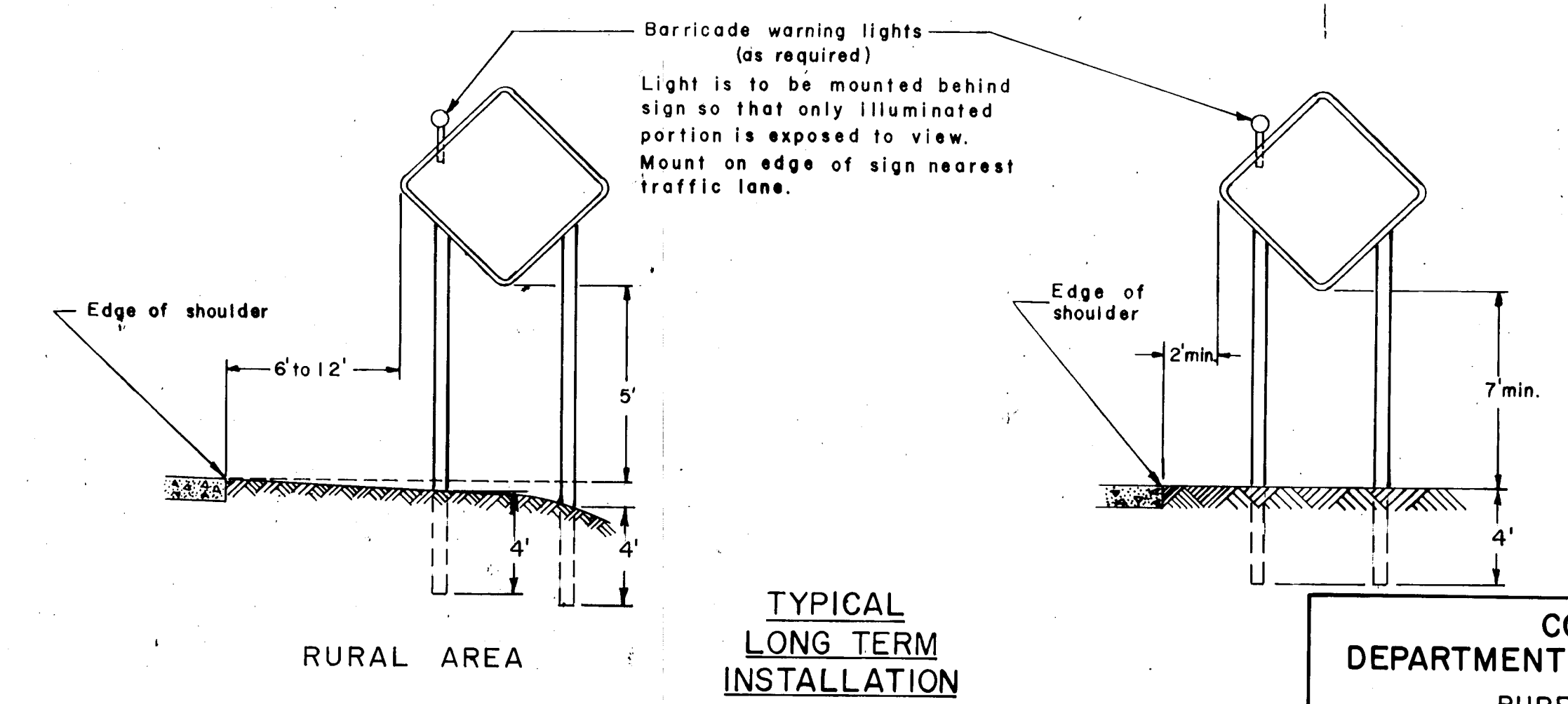
**CAUTION**  
SIDEWALK LEGALLY CLOSED  
BY AUTHORITY OF SEC. 13a-115  
CONNECTICUT GENERAL STATUTES  
AND  
PURSUANT TO SEC. 13a-288  
CONNECTICUT GENERAL STATUTES  
**USERS PASS AT YOUR OWN RISK**  
COMMISSIONER OF TRANSPORTATION

16-C

BLACK PRA COPY  
SILVER REFL. BACKGROUND

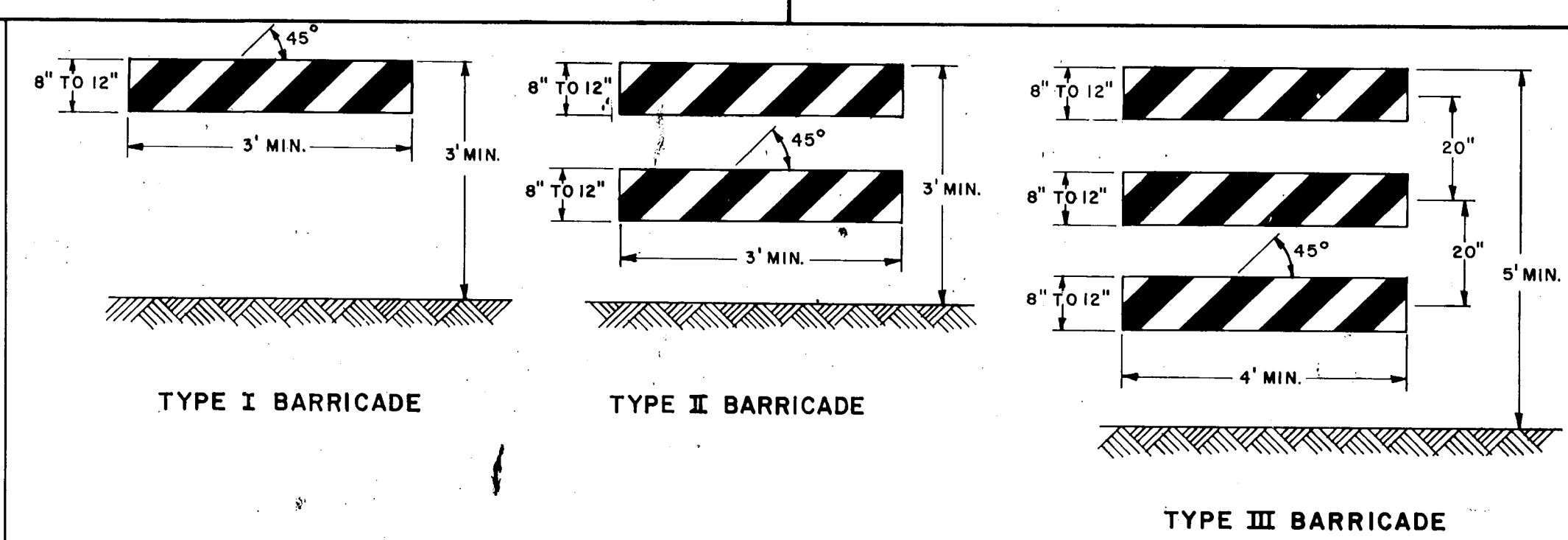
16A, 16B AND 16C SIGNS ARE TO BE ERECTED ON TWO 3 LB. SIGN POSTS UNLESS DIRECTED OTHERWISE BY THE ENGINEER

PLACEMENT OF ROADSIDE SIGNS



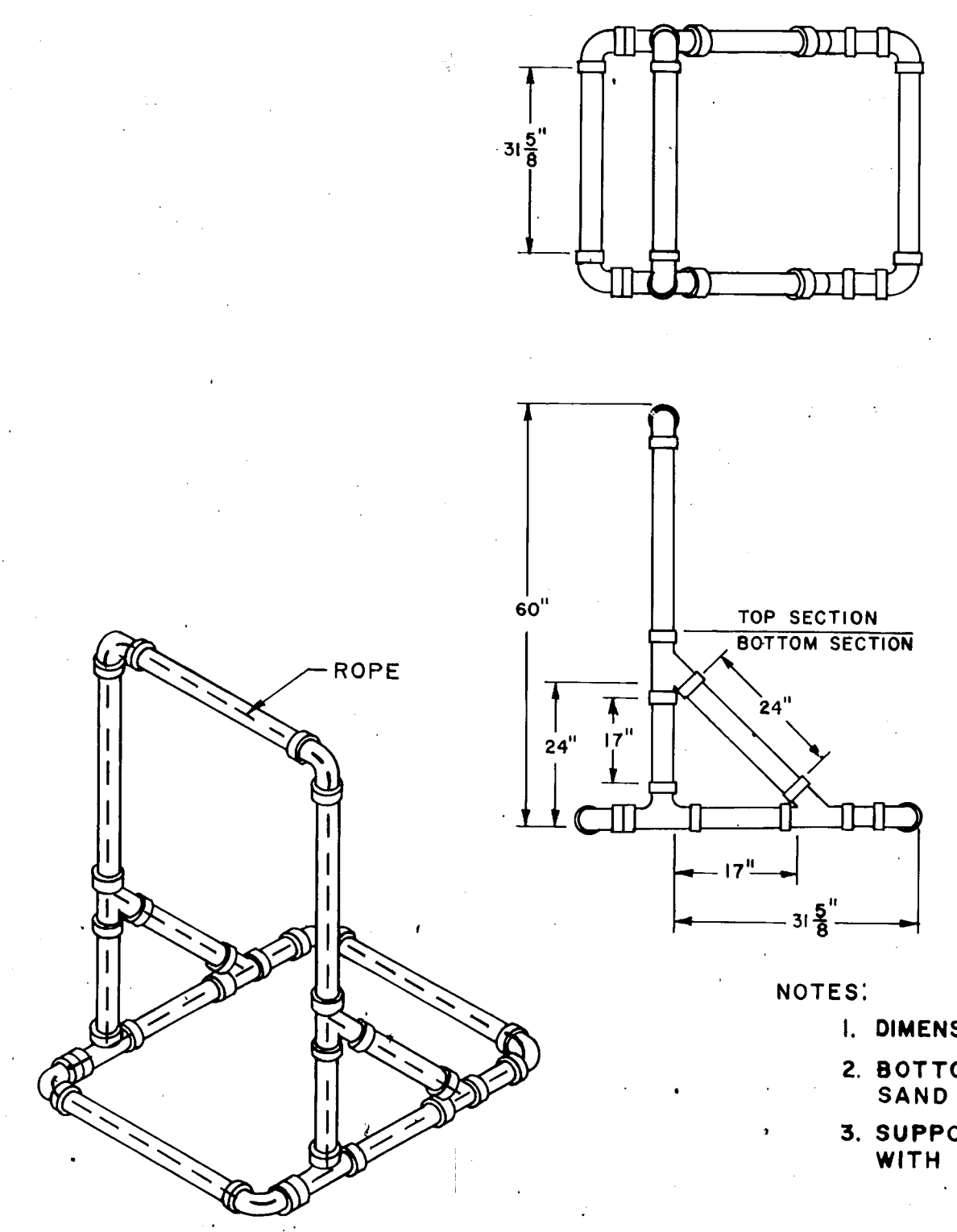
TYPICAL LONG TERM INSTALLATION

NOTE:  
Supports shall be metal sign post, see typical sheets:  
Typical Sign Support and Sign Placement Details.  
Typical Metal Sign Posts for Sign Face Sheet Aluminum.



CONSTRUCTION BARRICADES

- NOTES:
- MARKINGS FOR BARRICADE RAILS SHALL BE ALTERNATE ORANGE AND WHITE STRIPES SLOPING DOWNWARD IN THE DIRECTION TRAFFIC IS TO PASS. 6" WIDE STRIPES SHALL BE USED
  - THE ENTIRE AREA OF ORANGE AND WHITE STRIPES SHALL BE REFLECTIVE SHEETING-ENCAPSULATED LENS. RAILS FOR TYPE I AND TYPE II BARRICADES SHALL BE REFLECTORIZED ON BOTH SIDES. WHERE TRAFFIC PASSES ONLY IN ONE DIRECTION OF TRAVEL, ONLY THE SIDE FACING TRAFFIC SHALL BE REFLECTORIZED.
  - THE ENGINEER RESERVES THE RIGHT TO REJECT ANY BARRICADE WHICH HE DEEMS A HAZARD, OR NOT IN THE BEST INTEREST OF THE MOTORING PUBLIC.
  - CORNERS OF ALUMINUM BARRICADE RAILS SHALL BE ROUNDED.



TYPICAL 3" OR 4" PLASTIC SIGN/BARRICADE SUPPORT

- NOTES:
- DIMENSIONS ARE APPROXIMATE
  - BOTTOM SECTION MAY BE FILLED WITH SAND FOR BALLAST.
  - SUPPORT SHALL BE LOOSELY THREADED WITH ROPE, KNOTTED AS REQUIRED.

CONNECTICUT  
DEPARTMENT OF TRANSPORTATION  
BUREAU OF HIGHWAYS  
DIVISION OF TRAFFIC

TYPICAL CONSTRUCTION  
SIGN SUPPORTS AND  
CHANNELIZING DEVICES

REVISIONS		
NO.	DATE	DESCRIPTION
1	5-81	REV. BARR. SUPPORT TO 3" OR 4" PLAS. & ADD ROPE
2	2-83	SERIES 16 SIGNS REVISED 3 LB. POST & DEPTH NOTED

SUBMITTED BY *[Signature]* DATE 5-19-81  
SUBMITTED BY *[Signature]* DATE 5-19-81  
APPROVED *[Signature]* DATE 5-22-81  
CHIEF OF TRAFFIC ENGINEERING  
SCALE NONE