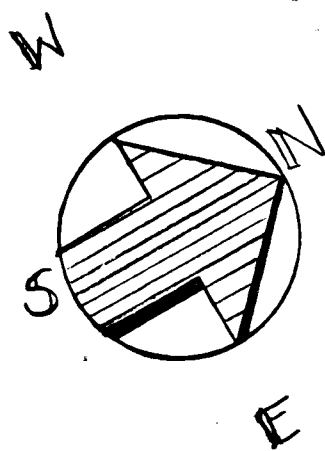
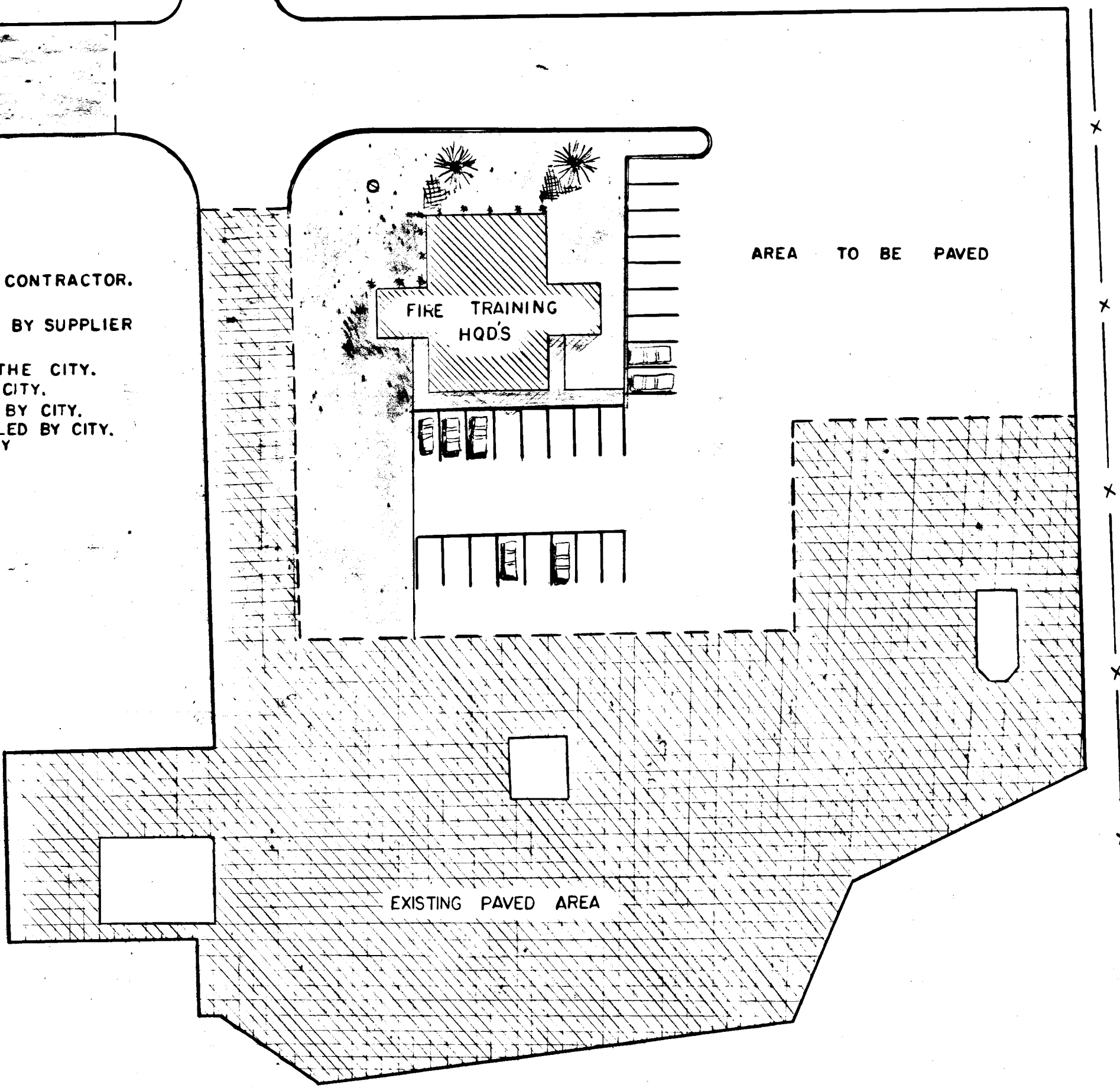


SITE PLAN 1" = 40'

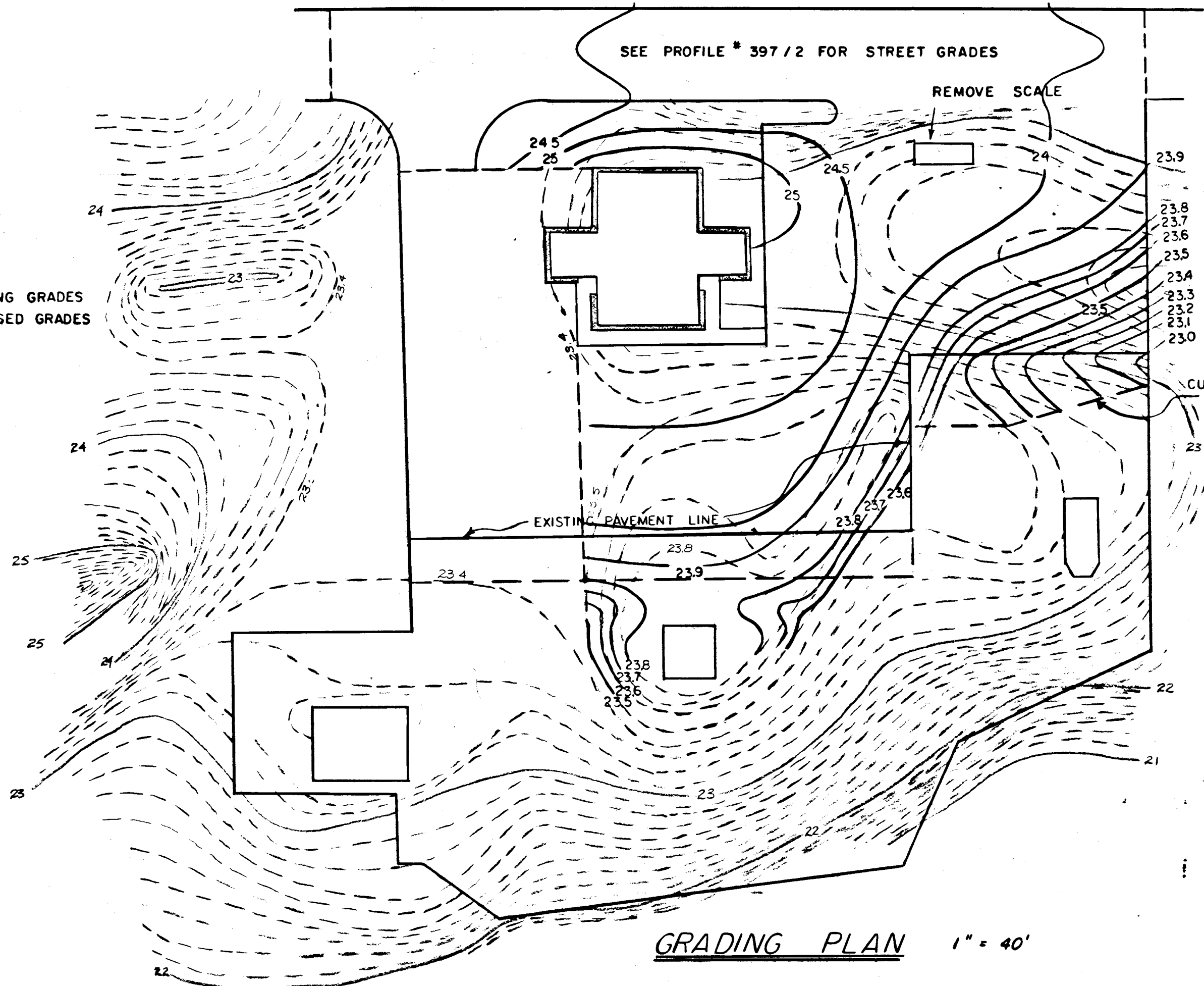


ITEMS OF WORK

CURB AND WALK TO BE INSTALLED BY CONTRACTOR.  
CURB TO BE SUPPLIED BY CITY.  
TREES AND MISC SHRUBS TO PLANTED BY SUPPLIER  
IN LOCATION DESIGNATED BY THE CITY.  
STALL MARKINGS TO BE SUPPLIED BY THE CITY.  
LAWN TO BE LOAMED AND SEEDS BY CITY.  
ALL GRADING AND PAVING TO BE DONE BY CITY.  
FLAG POLE TO BE FURNISHED AND INSTALLED BY CITY.  
EXISTING SCALE TO BE REMOVED BY CITY  
NEW CB TO BE INSTALLED BY CITY

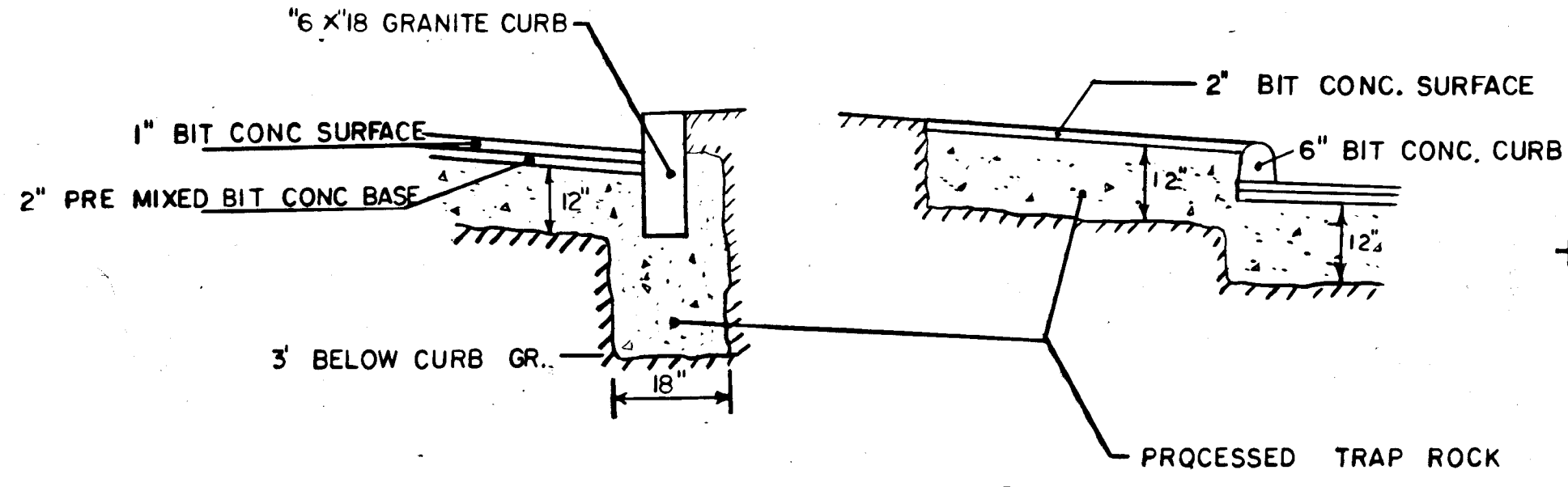
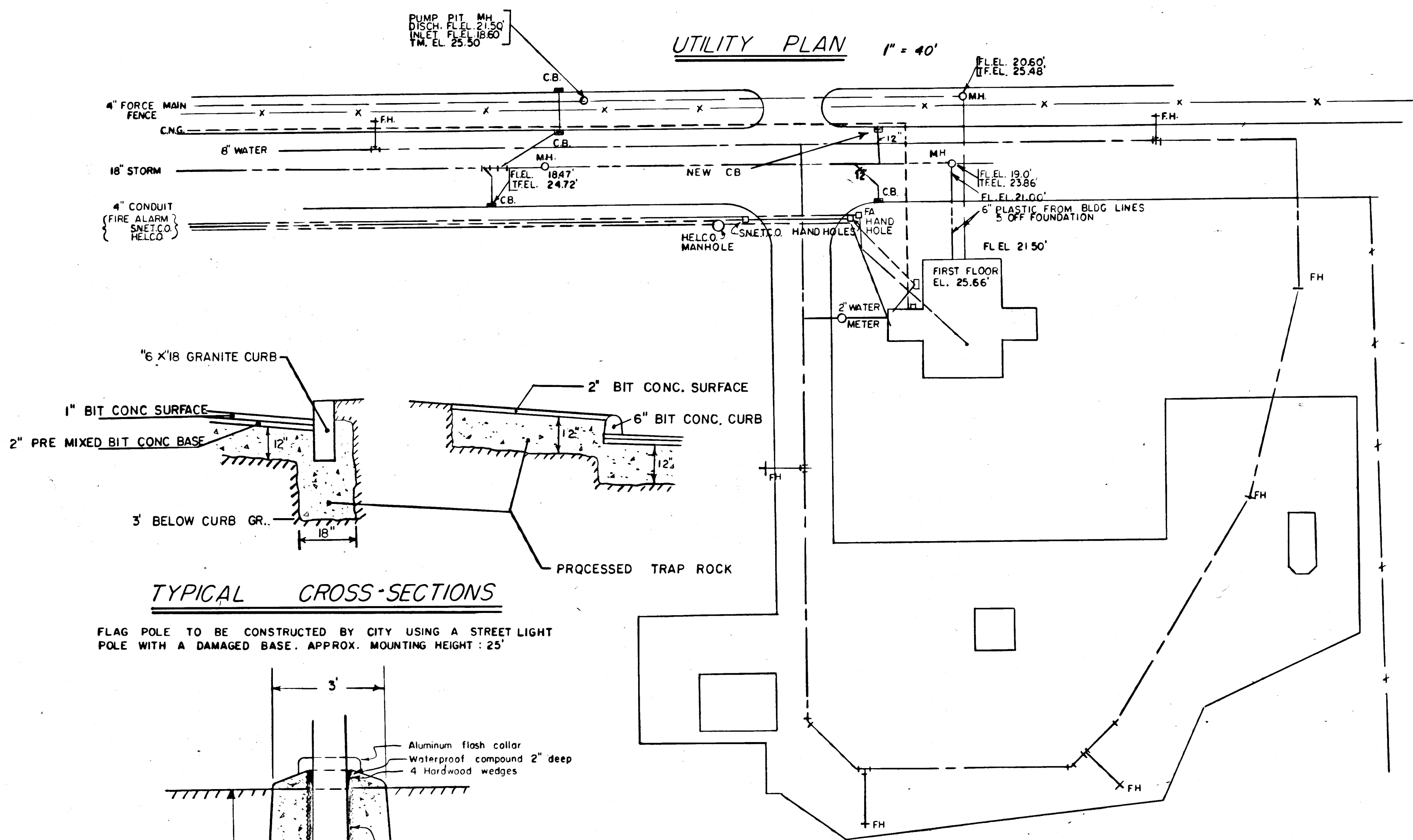


LIGHT LINES = EXISTING GRADES  
DARK LINES = PROPOSED GRADES



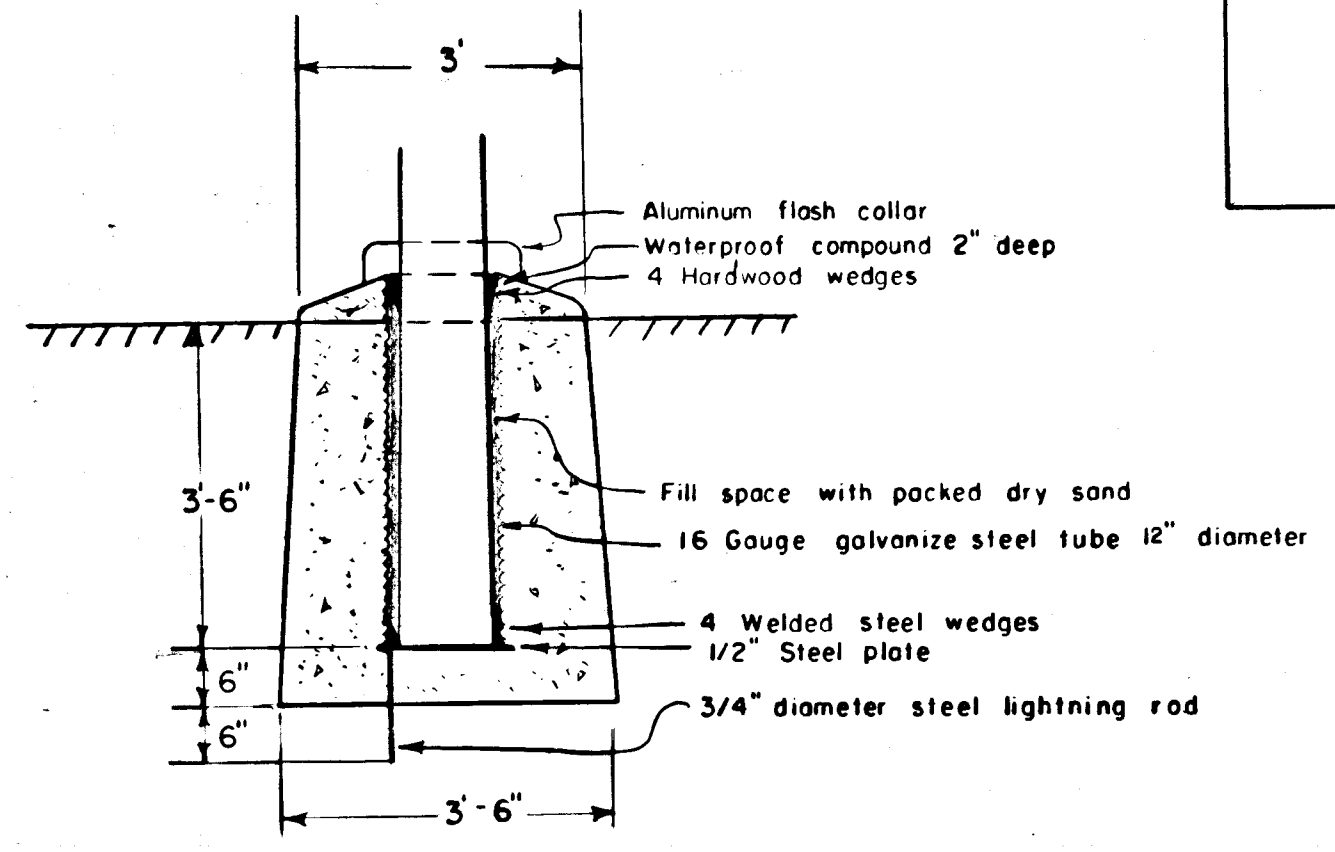
GRADING PLAN 1" = 40'

UTILITY PLAN 1" = 40'

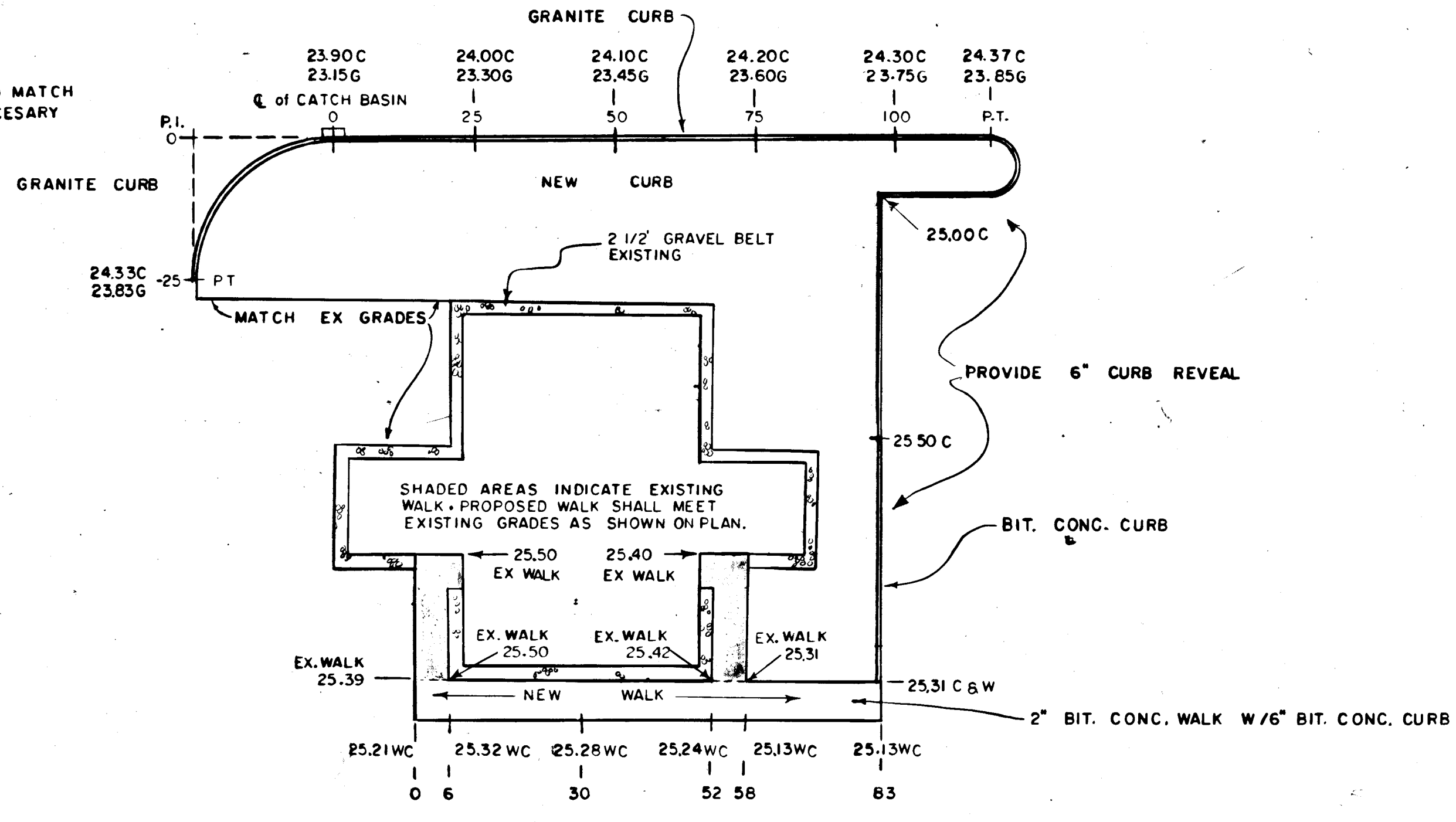


TYPICAL CROSS-SECTIONS

FLAG POLE TO BE CONSTRUCTED BY CITY USING A STREET LIGHT  
POLE WITH A DAMAGED BASE. APPROX. MOUNTING HEIGHT: 25'



FOUNDATION DETAILS for FLAG POLE



CURB AND WALK GRADES 1" = 20'

CITY OF HARTFORD, CONNECTICUT DEPARTMENT OF PUBLIC WORKS BUREAU OF ENGINEERING SERVICES		
SITE IMPROVEMENTS for the FIRE TRAINING FACILITY		
SUBMITTED <i>[Signature]</i> DIVISION ENGINEER	RECOMMENDED <i>[Signature]</i> CHIEF OF ENG. SERV.	APPROVED <i>[Signature]</i> ASST. DIR. & CITY ENG.
DRAWN W.J.K.	SCALE AS NOTED	DAYBOOK NO. 010782
CHECKED	DATE 2-26-82	