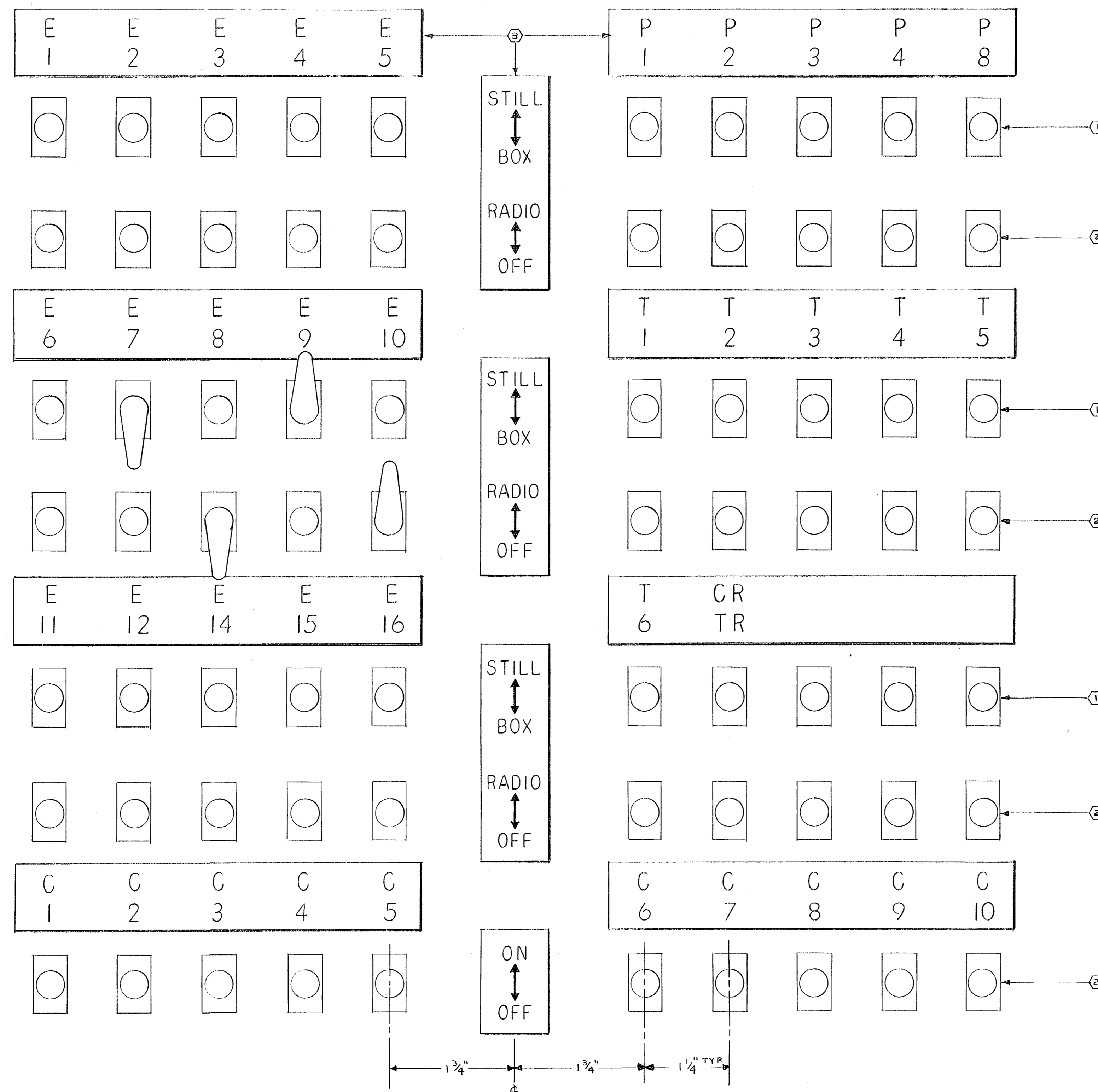
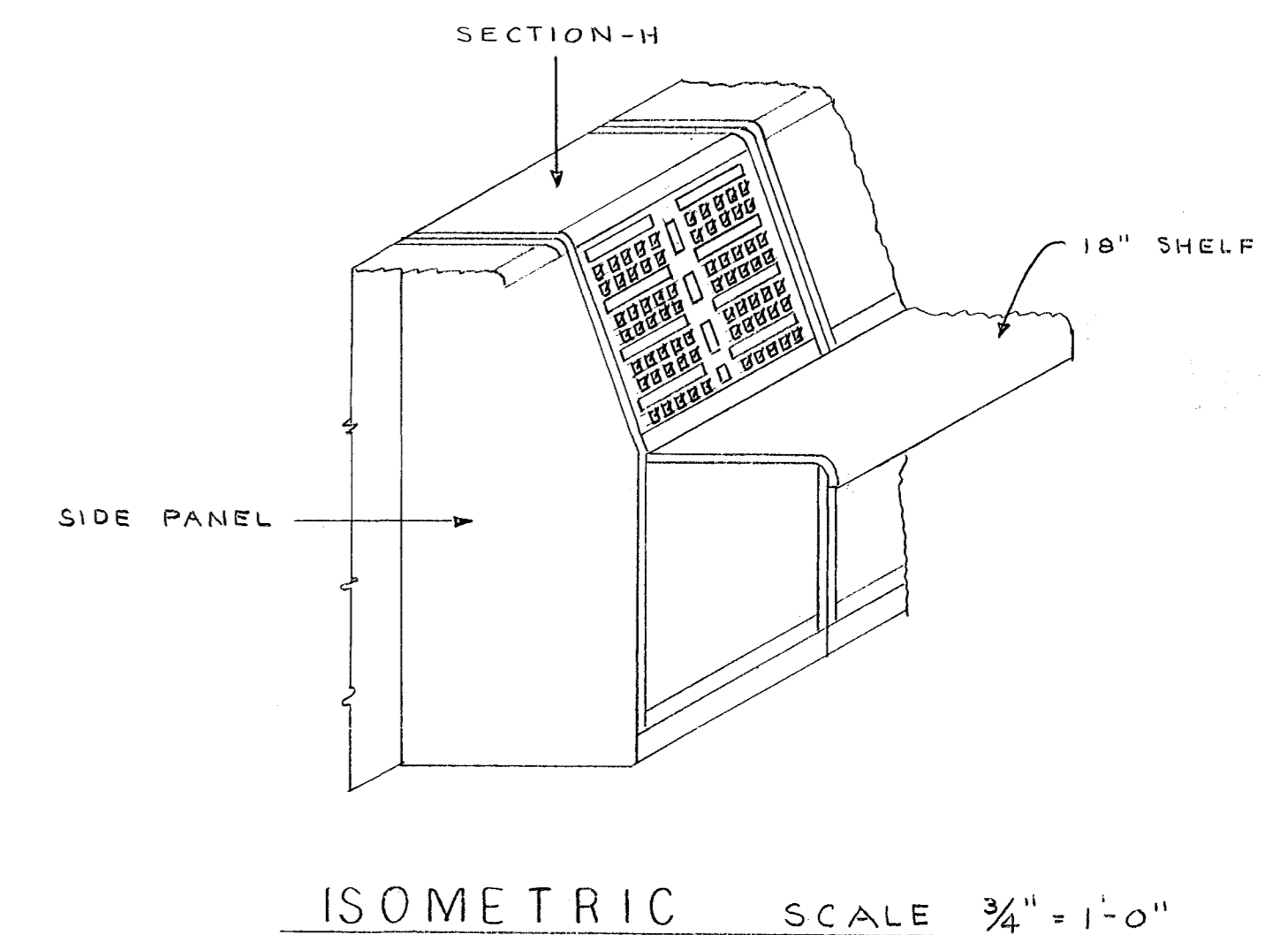


EQUIPMENT LEGEND

- ① ILLUMINATED MULTI-COLOR CODED LEVER SWITCH. CAPITOL MODEL HHL SWITCH WITH 24 VOLT T-2 SHORT BASE TELEPHONE SLIDE BASE TYPE LAMPS. SWITCH POSITIONS NO. 1 & 2 TO BE LOCKED. POSITION NO. 1 UP COLOR AMBER. POSITION NO. 2 DOWN COLOR RED. CENTER POSITION NEUTRAL NON-ILLUMINATED.
- ② SAME AS #1 EXCEPT POSITION NO. 1 UP COLOR GREEN. POSITION NO. 2 DOWN COLOR YELLOW. CENTER POSITION NEUTRAL NON-ILLUMINATED.
- ③ NAMEPLATES 1" HIGH WITH 1/4" HIGH ENGRAVED BLACK FILLED NUMBERS AND LETTERS WITH NUMBERING AND LETTERING AS SHOWN. MATERIAL TO BE TYPE 302 STAINLESS STEEL SATIN FINISH. NAMEPLATES TO BE RIGID AND SECURELY FASTENED.

NOTES:

- 1 PROVIDE 24 VOLT D.C. SOURCE OF ADEQUATE CAPACITY TO HANDLE ALL LAMPS.
- 2 PROVIDE 3 SPARE NO. 1 SWITCHES, 4 SPARE NO. 2 SWITCHES AND 50 SPARE LAMPS.



5A

CITY OF HARTFORD, CONNECTICUT DEPARTMENT OF ENGINEERING		
MODERNIZATION OF FIRE ALARM CENTRAL CONTROL OFFICE		
THIRD FLOOR 275 PEARL STREET HARTFORD CONN		
SUBMITTED <i>R. G. B.</i>	RECOMMENDED <i>Daniel J. Trull</i>	APPROVED <i>John H. Benson</i>
DESIGN <i>R. G. B.</i>	DRAWN <i>R. G. B.</i>	DAYBOOK NO. 09901-F
TRACED	CHECK	DATE AUGUST 2, 1965

VERIFY EXISTING
CONDITIONS AND
DIMENSIONS AT
BUILDING