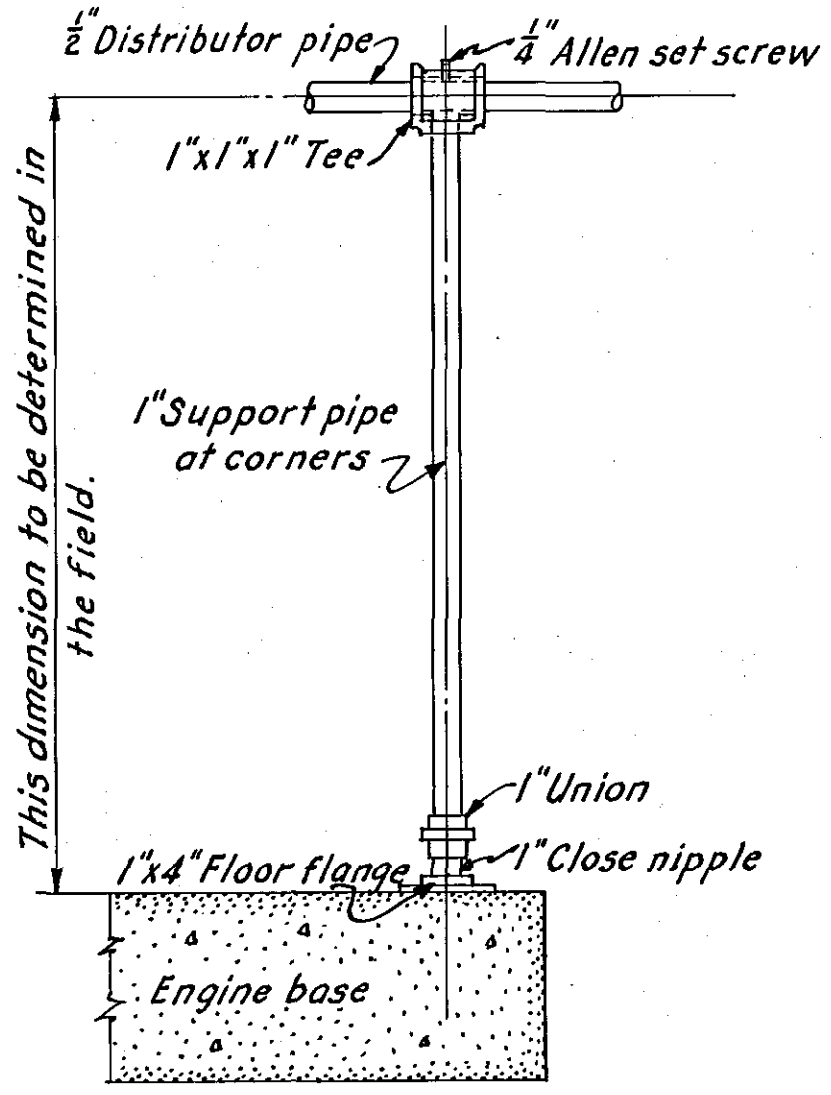


PLAN-ENGINE ROOM

SCALE: 1/4" = 1'-0"

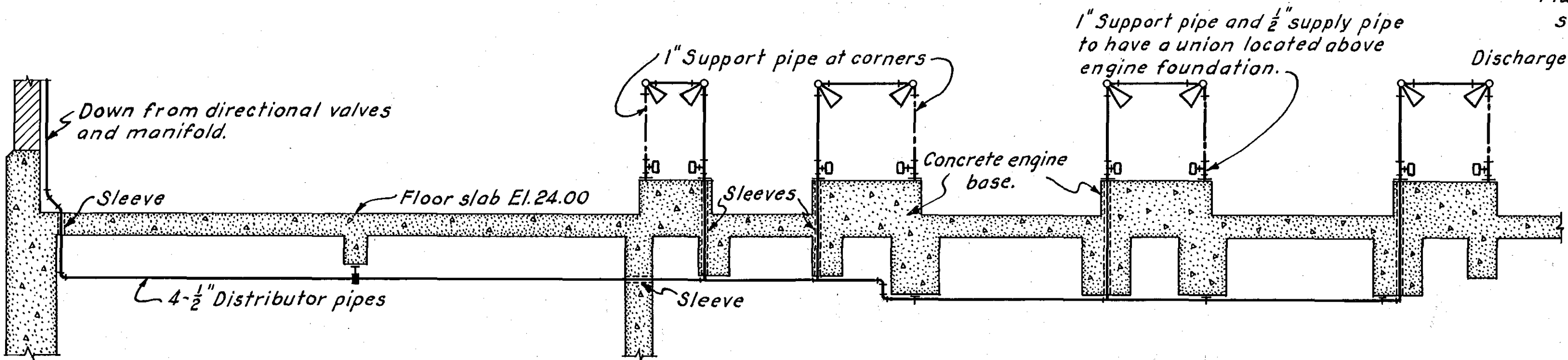


DETAIL CORNER SUPPORT

SCALE: 1/2" = 1'-0"  
12" 9" 6" 3" 0" 6" 12"

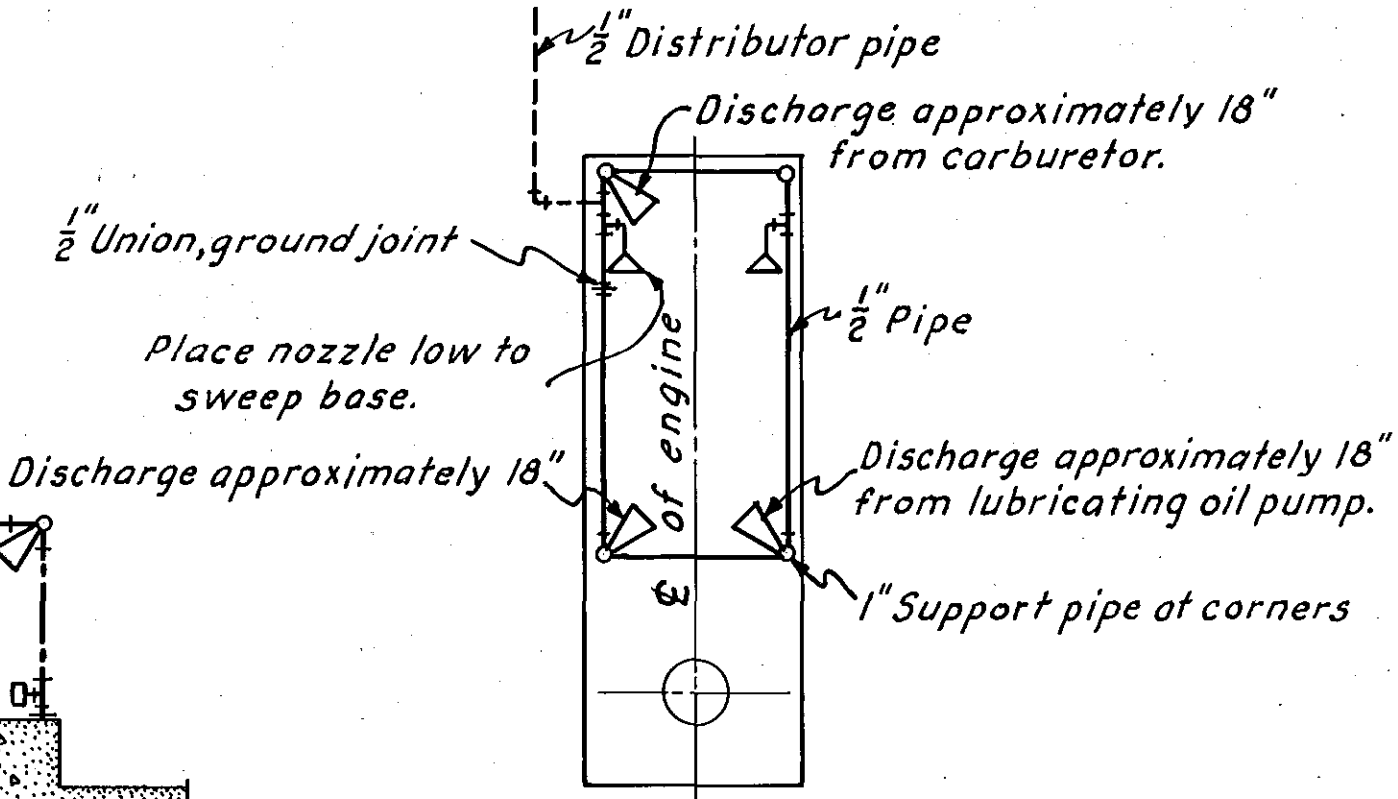
NOTES

Furnishing and installing all fire protection piping, equipment, sleeves and accessories necessary for a complete installation were paid for under Item No. 21.  
Piping is shown diagrammatically; the exact location suits the equipment furnished.  
Piping is supported on hangers or clips spaced at eight foot maximum intervals.  
Fire nozzles are installed at each engine in approximately the positions shown.  
Permanent positions are governed by the equipment furnished.  
Nozzles and their supporting racks are rigidly secured in the permanent positions by approved bracings.



SECTIONAL VIEW

SCALE: 1/4" = 1'-0"



PLAN OF ENGINE BASE

SCALE: 1/4" = 1'-0"

RECORD  
DRAWINGS

CONNECTICUT RIVER FLOOD CONTROL			
KEENEY LANE PUMPING STATION			
HARTFORD, CONNECTICUT			
PIPING LAYOUT			
FIRE EXTINGUISHING SYSTEM			
CONNECTICUT RIVER		CONNECTICUT	
IN 60 SHEETS		SCALE: 1/4" = 1' F.T.	
SHEET NO. 51			
U.S. ENGINEER OFFICE, PROVIDENCE, R.I., JUNE 1944			
SUBMITTED: <i>H. J. Jones</i>		APPROVED: <i>H. J. Jones</i>	
SENIOR ENGINEER		HEAD ENGINEER	
HEAD MECHANICAL SECTION		ENGINEERING DIV.	
PREPARED BY: <i>J. K. Jones</i>		DRAWN: J. K. Jones	
MECHANICAL SUBSECTION		TRACED: A.S.T.	
		CHECKED: <i>G. M. Jones</i>	
FILE NO. CT-4-3264			

KEY	DATE	REVISION (Indicated by Δ)	REV. BY	CK. BY	AP. BY