

- RD-1 ZONE
- SEC. 35-430. FLOOR AREA RATIO. THE MAXIMUM FLOOR AREA RATIO FOR ALL RD-1 STRUCTURES SHALL BE THREE (3) FOR ANY LOT.
- SEC. 35-431. LIMITATIONS ON PERSONS PER ACRE. THE MAXIMUM NUMBER OF PERSONS PER ACRE FOR RD-1 RESIDENTIAL STRUCTURES OR RESIDENTIAL PORTIONS OF STRUCTURES SHALL NOT EXCEED THREE HUNDRED (300).
- SEC. 35-432. PERMITTED LOT OCCUPANCY. (A) ALL RD-1 PRINCIPAL STRUCTURES SHALL OCCUPY NOT MORE THAN A TOTAL OF THIRTY (30) PERCENT OF THE AREA OF THE LOT. (B) COMBINED OFFICE AND RESIDENTIAL STRUCTURES ARE PERMITTED PROVIDED THE REQUIREMENTS FOR MAXIMUM FLOOR AREA RATIO AND MAXIMUM PERSONS PER ACRE ARE SATISFIED FOR THE STRUCTURE AS A WHOLE. SUCH STRUCTURES SHALL OCCUPY NOT MORE THAN A TOTAL OF THIRTY (30) PERCENT OF THE AREA OF THE LOT AND THE RESIDENTIAL PORTIONS OF SUCH STRUCTURES SHALL MEET ALL OTHER RESIDENTIAL REQUIREMENTS SET FORTH IN THIS CHAPTER FOR THE RD-1 DISTRICT. (C) THE RESIDENTIAL PORTIONS OF COMBINED OFFICE AND RESIDENTIAL STRUCTURES SHALL BE LOCATED ABOVE THE OFFICE PORTIONS OF SUCH STRUCTURES. (D) THE LOT OCCUPANCY OF PRINCIPAL, RESIDENTIAL, OFFICE OR COMBINED RESIDENTIAL/OFFICE STRUCTURES MAY BE INCREASED BEYOND THE PERMITTED LOT OCCUPANCY OF THIRTY (30) PERCENT OF THE AREA OF THE LOT UP TO A MAXIMUM OF FIFTY (50) PERCENT OF THE AREA OF THE LOT AT THE RATE OF THREE HUNDRED (300) SQUARE FEET OF LOT OCCUPANCY BEYOND THE PERMITTED THIRTY (30) PERCENT OF THE AREA OF THE LOT FOR EACH ON-SITE COVERED PARKING SPACE PROVIDED FOR THE PRINCIPAL, RESIDENTIAL, OFFICE OR COMBINED RESIDENTIAL/OFFICE STRUCTURE. (E) IN NO INSTANCES SHALL THE TOTAL LOT COVERAGE OF ALL STRUCTURES, WITH THEIR ACCESSORY STRUCTURES, EXCEED MORE THAN FIFTY (50) PERCENT OF THE AREA OF THE LOT.
- SEC. 35-434. REQUIRED LOT AREA. (A) EVERY PARCEL OF PROPERTY TO BE UTILIZED FOR RESIDENTIAL PURPOSES IN THE RD-1 DISTRICT SHALL HAVE A MINIMUM LOT AREA OF SEVENTY-FIVE HUNDRED (7,500) SQUARE FEET. (B) EVERY PARCEL OF PROPERTY TO BE UTILIZED FOR OFFICE OR NONRESIDENTIAL PURPOSES IN THE RD-1 DISTRICT SHALL HAVE A MINIMUM LOT AREA OF SEVENTY-FIVE HUNDRED (7,500) SQUARE FEET. (C) EVERY PARCEL OF PROPERTY TO BE UTILIZED FOR A COMBINATION OF OFFICE AND RESIDENTIAL PURPOSES IN THE RD-1 DISTRICT SHALL HAVE A MINIMUM LOT AREA OF TWENTY THOUSAND (20,000) SQUARE FEET.
- SEC. 35-435. LOT WIDTH. EVERY RD-1 LOT SHALL HAVE A MINIMUM LOT WIDTH AT THE STREET LINE OF NOT LESS THAN SIXTY (60) FEET.
- SEC. 35-436. FRONT YARD. THERE SHALL BE A FRONT YARD FOR EVERY RD-1 PRINCIPAL STRUCTURE IN CONFORMANCE WITH THE EXISTING BUILDING LINE AND VERANDA LINE.
- SEC. 35-437. SIDEYARDS. (A) THERE SHALL BE A MINIMUM SIDE YARD FOR EVERY RD-1 PRINCIPAL OFFICE OR NONRESIDENTIAL STRUCTURE OR OFFICE PORTION OF A COMBINED RESIDENTIAL/OFFICE STRUCTURE OF ONE-FOURTH THE HEIGHT OF THE ADJACENT WALL OF THE PRINCIPAL OFFICE OR NONRESIDENTIAL STRUCTURE OR OFFICE PORTION OF A COMBINED RESIDENTIAL/OFFICE STRUCTURE. (B) THERE SHALL BE A MINIMUM TOTAL WIDTH FOR SIDE YARDS FOR EVERY PRINCIPAL RESIDENTIAL STRUCTURE OR RESIDENTIAL PORTION OF THE STRUCTURE OF TWENTY-FIVE (25) FEET, WITH A MINIMUM SIDE YARD REQUIREMENT OF TEN (10) FEET, OR ONE-FOURTH THE HEIGHT OF THE ADJACENT WALL OF THE PRINCIPAL RESIDENTIAL STRUCTURE, OR RESIDENTIAL PORTION OF THE STRUCTURE, WHICHEVER IS GREATER. (C) WHERE EITHER SIDE YARD OF A LOT LOCATED IN AN RD-1 DISTRICT ABUTS UPON PROPERTY USED FOR RESIDENTIAL PURPOSES AND LOCATED IN AN R-6, R-7 OR R-8 DISTRICT, SUCH SIDE YARD SHALL BE EQUAL IN WIDTH TO THREE (3) TIMES THE HEIGHT OF THE ADJACENT WALL OF THE PRINCIPAL STRUCTURE, EXCEPT THAT IN NO INSTANCE SHALL SUCH SIDE YARD BE LESS THAN ONE HUNDRED (100) FEET, AND EXCEPT THAT THAT PORTION OF THE PRINCIPAL STRUCTURE USED FOR PARKING PURPOSES AND NOT EXCEEDING A HEIGHT OF TWENTY (20) FEET ABOVE GRADE MAY BE LOCATED A MINIMUM DISTANCE OF ONE HUNDRED (100) FEET FROM THE SIDE PROPERTY LINE ABUTTING THE R-6, R-7 OR R-8 DISTRICT.
- SEC. 35-438. REAR YARD. (A) THERE SHALL BE A MINIMUM REAR YARD OF THIRTY (30) FEET FOR EVERY RD-1 PRINCIPAL STRUCTURE. (B) WHERE ANY REAR YARD OF A LOT LOCATED IN AN RD-1 DISTRICT ABUTS UPON PROPERTY USED FOR RESIDENTIAL PURPOSES AND LOCATED IN AN R-6, R-7 OR R-8 DISTRICT, SUCH REAR YARD SHALL BE EQUAL IN WIDTH TO THREE (3) TIMES THE HEIGHT OF THE ADJACENT WALL OF THE PRINCIPAL STRUCTURE, EXCEPT THAT IN NO INSTANCE SHALL SUCH REAR YARD BE LESS THAN ONE HUNDRED (100) FEET, AND EXCEPT THAT THAT PORTION OF THE PRINCIPAL STRUCTURE USED FOR PARKING PURPOSES AND NOT EXCEEDING A HEIGHT OF TWENTY (20) FEET ABOVE GRADE MAY BE LOCATED A MINIMUM DISTANCE OF ONE HUNDRED (100) FEET FROM THE REAR PROPERTY LINE ABUTTING THE R-6, R-7 OR R-8 DISTRICT.
- SEC. 35-439. MAXIMUM HEIGHT LIMIT. THERE SHALL BE NO RD-1 MAXIMUM HEIGHT REQUIREMENT.
- SEC. 35-440. REQUIRED USABLE OPEN SPACE. THERE SHALL BE PROVIDED A MINIMUM OF FORTY (40) SQUARE FEET OF USABLE OPEN SPACE PER PERSON IN ACCORDANCE WITH THE TABLE OF DENSITIES SET FORTH IN THE DEFINITION OF "DENSITY" IN SECTION 35-2, AND IN ACCORDANCE WITH THE PROVISIONS UNDER THE DEFINITION OF "OPEN SPACE, USABLE LANDSCAPED" IN SECTIONS 35-2 AND 35-8.
- SEC. 35-442. PROCEDURES FOR PROJECTS CONTAINING ONE HUNDRED FIFTY THOUSAND (150,000) SQUARE FEET OR MORE OF GROSS FLOOR AREA IN THE RD-1 DISTRICT. SEE ZONING REGULATIONS.

LEGEND  
(SYMBOLS NOT TO SCALE)

- |   |  |
|---|--|
| <ul style="list-style-type: none"> <li>○ = CATCH BASIN</li> <li>○ = SANITARY MANHOLE</li> <li>○ = DRAINAGE MANHOLE</li> <li>○ = WATER MANHOLE</li> <li>○ = TELEPHONE MANHOLE</li> <li>○ = ELECTRIC MANHOLE</li> <li>○ = UNKNOWN MANHOLE</li> <li>○ = YARD DRAIN</li> <li>○ = CABLE MANHOLE</li> <li>○ = FLARED END SECTION</li> <li>○ = FIRE HYDRANT</li> <li>○ = WATER GATE VALVE</li> <li>○ = GAS GATE VALVE</li> <li>○ = MISC. GATE VALVE</li> <li>○ = VENT PIPE</li> <li>○ = FILL CAP</li> <li>○ = MAIL BOX</li> <li>○ = HAND HOLE</li> <li>○ = CONTROLLER CABINET</li> <li>○ = ELECTRIC TRANSFORMER</li> <li>○ = UTILITY POLE</li> <li>○ = CROSSWALK POLE</li> <li>○ = LIGHT POLE</li> <li>○ = POST</li> <li>○ = TRAFFIC LIGHT SUPPORT POLE</li> <li>○ = STREET SIGN</li> <li>○ = TREE (TYP.)</li> <li>○ = MONITOR WELL</li> <li>○ = BORING</li> <li>○ = ELECTRIC METER</li> <li>○ = COMMON OWNERSHIP</li> </ul> | <ul style="list-style-type: none"> <li>○ = GAS METER</li> <li>○ = WATER METER</li> <li>○ = TELEPHONE</li> <li>○ = AC UNIT</li> <li>○ = TREE LINE</li> <li>○ = STONE WALL</li> <li>○ = CLADE RAIL</li> <li>○ = DIRECTION OF FLOW</li> <li>○ = I.P. PROPERTY CORNER</li> <li>○ = MONUMENT</li> <li>○ = DRILL HOLE</li> <li>○ = SURVEY CONTROL POINT</li> <li>○ = FENCE LINE</li> <li>○ = WATER LINE</li> <li>○ = GAS LINE</li> <li>○ = ELECTRIC LINE</li> <li>○ = CABLE TELEVISION LINE</li> <li>○ = OVERHEAD WIRES</li> <li>○ = POINT OF BEGINNING</li> <li>○ = NORTHING</li> <li>○ = EASTING</li> <li>○ = NOW OR FORMERLY</li> <li>○ = HARTFORD LAND RECORDS</li> <li>○ = DELTA ANGLE</li> <li>○ = RADIUS</li> <li>○ = TANGENT</li> <li>○ = LENGTH</li> <li>○ = CHORD</li> <li>○ = CHORD BEARING</li> <li>○ = FRONT YARD</li> <li>○ = REAR YARD</li> <li>○ = CONTROL POINT</li> <li>○ = HARTFORD MERISTONE</li> <li>○ = ASSESSOR'S LOT NUMBER</li> </ul> |
|---|--|

PERIMETER DESCRIPTION  
200 ASHLEY STREET

A CERTAIN PIECE OR PARCEL OF LAND, SITUATED ON THE EASTERN SIDE OF WOODLAND STREET AND THE NORTHERLY SIDE OF ASHLEY STREET IN THE CITY OF HARTFORD, COUNTY OF HARTFORD, STATE OF CONNECTICUT AS DEPICTED ON A PLAN ENTITLED "PROPERTY SURVEY OF ST. FRANCIS HOSPITAL & MEDICAL CENTER 200,206,210,218,222 & 200 ASHLEY STREET HARTFORD, CONNECTICUT DATED 04-10-08 SCALE 1"=50' JOB NO. 05713 BY F.A. HEKETH & ASSOCIATES, INC." SAID PARCEL BEING BOUNDED AND MORE PARTICULARLY DESCRIBED AS FOLLOWS:

BEGINNING AT A POINT AT THE SOUTHWESTERN CORNER OF THE PARCEL HEREIN DESCRIBED WHICH POINT IS THE INTERSECTION OF THE EASTERN STREET LINE OF WOODLAND STREET WITH THE NORTHERLY STREET LINE OF ASHLEY STREET.

THENCE, N 18° 51' 32" E A DISTANCE OF 138.89 FEET TO A POINT.

THENCE, S 73° 08' 25" E A DISTANCE OF 211.87 FEET TO A POINT.

THENCE, N 10° 11' 58" E A DISTANCE OF 14.05 FEET TO A POINT. THE LAST TWO COURSES BEING ALONG LAND NOW OR FORMERLY OF THE URBAN LEAGUE OF GREATER HARTFORD, INC.

THENCE, S 73° 12' 56" E A DISTANCE OF 101.13 FEET TO A POINT.

THENCE, S 72° 56' 05" E A DISTANCE OF 40.00 FEET TO A POINT. THE LAST TWO COURSES BEING ALONG LAND NOW OR FORMERLY OF AUREY DIXON, JOAN P. FACEY AND ANNETTE WHITE-EDWARDS PARTLY BY EACH.

THENCE, S 18° 23' 44" E A DISTANCE OF 165.00 FEET ALONG LAND NOW OR FORMERLY OF HILL HOUSING, INC. TO A POINT IN THE NORTHERLY STREET LINE OF ASHLEY STREET.

THENCE, N 73° 11' 57" W A DISTANCE OF 355.85 FEET TO A POINT.

THENCE, N 26° 41' 38" W A DISTANCE OF 1619 FEET TO THE POINT AND PLACE OF BEGINNING. THE LAST TWO COURSES BEING ALONG THE NORTHERLY STREET LINE OF ASHLEY STREET.

SAID PARCEL CONTAINS 56,888 SQUARE FEET OR 1.31 ACRES MORE OR LESS.

PERIMETER DESCRIPTION  
200,206,210,218 & 222 ASHLEY STREET

A CERTAIN PIECE OR PARCEL OF LAND, SITUATED ON THE WESTERN SIDE OF WOODLAND STREET AND THE NORTHERLY SIDE OF ASHLEY STREET IN THE CITY OF HARTFORD, COUNTY OF HARTFORD, STATE OF CONNECTICUT AS DEPICTED ON A PLAN ENTITLED "PROPERTY SURVEY OF ST. FRANCIS HOSPITAL & MEDICAL CENTER 200,206,210,218,222 & 200 ASHLEY STREET HARTFORD, CONNECTICUT DATED 04-10-08 SCALE 1"=50' JOB NO. 05713 BY F.A. HEKETH & ASSOCIATES, INC." SAID PARCEL BEING BOUNDED AND MORE PARTICULARLY DESCRIBED AS FOLLOWS:

BEGINNING AT A POINT AT THE SOUTHWESTERN CORNER OF THE PARCEL HEREIN DESCRIBED WHICH POINT IS THE INTERSECTION OF THE WESTERN STREET LINE OF WOODLAND STREET WITH THE NORTHERLY STREET LINE OF ASHLEY STREET.

THENCE, N 73° 11' 57" W A DISTANCE OF 367.50 FEET ALONG THE NORTHERLY STREET LINE OF ASHLEY STREET TO A POINT.

THENCE, N 18° 48' 03" E A DISTANCE OF 185.00 FEET ALONG LAND NOW OR FORMERLY OF HILL HOUSING, INC. TO A POINT.

THENCE, S 73° 11' 57" E A DISTANCE OF 156.00 FEET ALONG LAND NOW OR FORMERLY OF DEUTSCHE BANK NATIONAL TRUST COMPANY, AS TRUSTEE, SHANE GORDON AND CANDY M. EDWARD PARTLY BY EACH TO A POINT.

THENCE, S 18° 48' 03" E A DISTANCE OF 25.00 FEET TO A POINT.

THENCE, S 73° 11' 57" E A DISTANCE OF 100.00 FEET TO A POINT.

THENCE, S 18° 48' 03" W A DISTANCE OF 5.00 FEET TO A POINT.

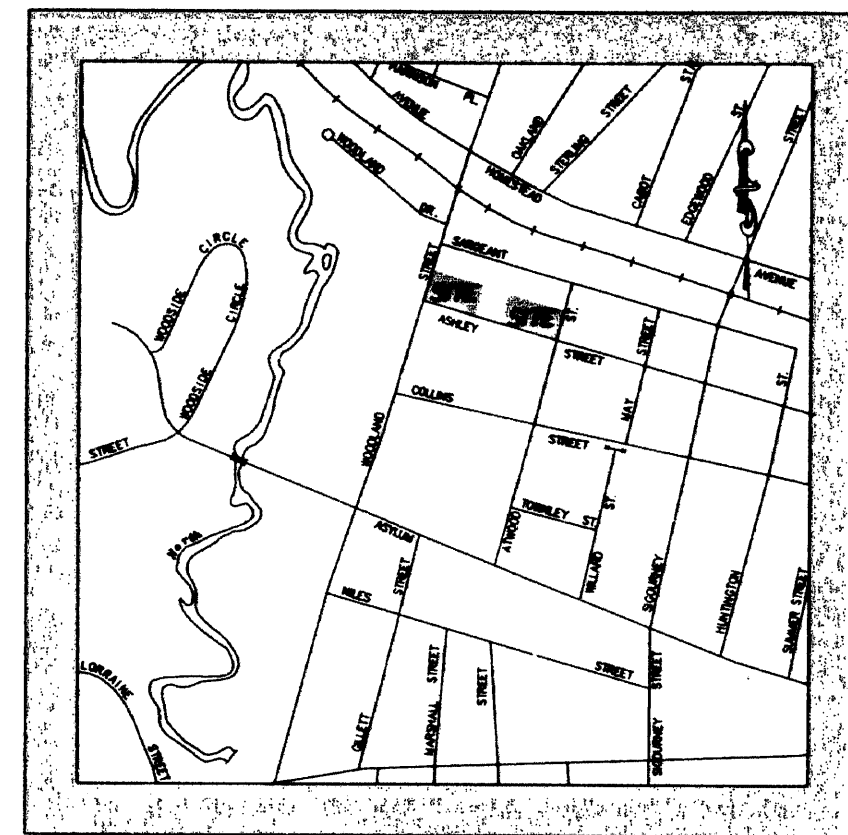
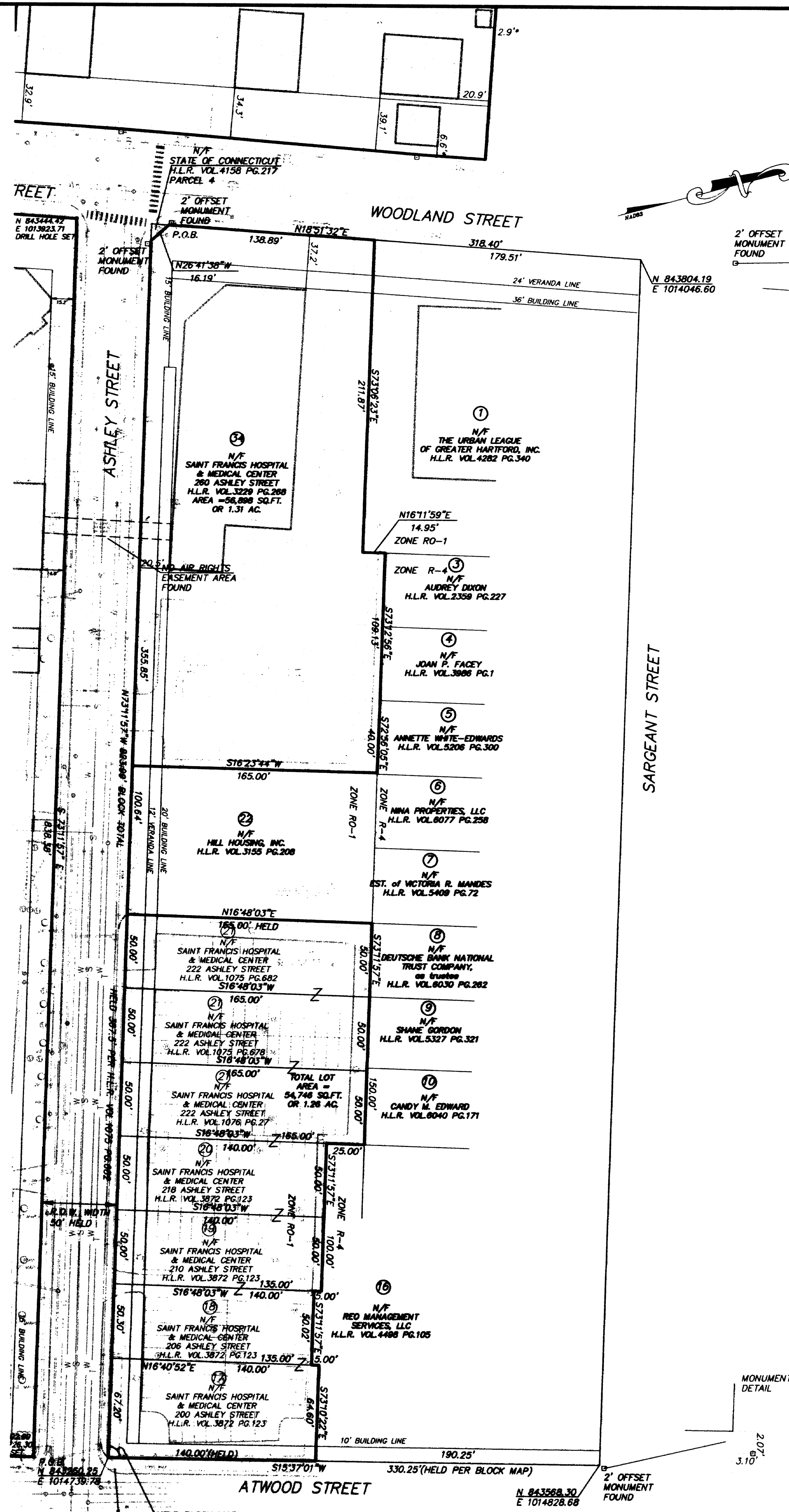
THENCE, S 73° 11' 57" E A DISTANCE OF 50.00 FEET TO A POINT.

THENCE, N 10° 40' 52" E A DISTANCE OF 50.00 FEET TO A POINT.

THENCE, S 73° 10' 22" E A DISTANCE OF 84.00 FEET TO A POINT IN THE WESTERN STREET LINE OF WOODLAND STREET.

THENCE, S 15° 37' 01" W A DISTANCE OF 140.00 FEET ALONG THE WESTERN LINE OF WOODLAND STREET TO THE POINT AND PLACE OF BEGINNING.

SAID PARCEL CONTAINS 54,748 SQUARE FEET OR 1.26 ACRES MORE OR LESS AND BEING THE PRINCIPAL OF THE COMBINED LOTS OF LAND OWNED BY SAINT FRANCIS HOSPITAL & MEDICAL CENTER DESCRIBED IN HARTFORD LAND RECORDS VOLUME 3022 PAGE 22, VOLUME 1075 PAGE 478, VOLUME 1075 PAGE 682 AND VOLUME 1076 PAGE 27.



NOTES:

- THIS SURVEY HAS BEEN PREPARED PURSUANT TO THE REGULATIONS OF CONNECTICUT STATE AGENCIES SECTIONS 30-30B-1 THROUGH 30-30B-30 AND THE STANDARDS FOR SURVEYS AND MAPS IN THE STATE OF CONNECTICUT AS ADOPTED BY THE CONNECTICUT ASSOCIATION OF LAND SURVEYORS, INC. ON SEPTEMBER 24, 1996.
- IT IS A PROPERTY SURVEY INTENDED TO BE USED FOR FINANCING PURPOSES.
- THIS SURVEY FALLS INTO THE RESURVEY BOUNDARY DETERMINATION CATEGORY.
- THIS SURVEY CONFORMS TO CLASS A-2 ACCURACY STANDARDS.
- COORDINATES DEPICTED HEREON REFER TO THE NORTH AMERICAN DATUM OF 1983 (NAD83). METROPOLITAN DISTRICT COMMISSION (MDC) STATION NO. 48030 (NAD83) 480301.00 (E) 480301.00 (N) 480301.00 (U) 480301.00 (M) 480301.00 (H) 480301.00 (V) 480301.00 (D) 480301.00 (S) 480301.00 (O) 480301.00 (B) 480301.00 (F) 480301.00 (A) 480301.00 (P) 480301.00 (Y) 480301.00 (G) 480301.00 (X) 480301.00 (J) 480301.00 (K) 480301.00 (L) 480301.00 (M) 480301.00 (N) 480301.00 (O) 480301.00 (P) 480301.00 (Q) 480301.00 (R) 480301.00 (S) 480301.00 (T) 480301.00 (U) 480301.00 (V) 480301.00 (W) 480301.00 (X) 480301.00 (Y) 480301.00 (Z) 480301.00 (AA) 480301.00 (AB) 480301.00 (AC) 480301.00 (AD) 480301.00 (AE) 480301.00 (AF) 480301.00 (AG) 480301.00 (AH) 480301.00 (AI) 480301.00 (AJ) 480301.00 (AK) 480301.00 (AL) 480301.00 (AM) 480301.00 (AN) 480301.00 (AO) 480301.00 (AP) 480301.00 (AQ) 480301.00 (AR) 480301.00 (AS) 480301.00 (AT) 480301.00 (AU) 480301.00 (AV) 480301.00 (AW) 480301.00 (AX) 480301.00 (AY) 480301.00 (AZ) 480301.00 (BA) 480301.00 (BB) 480301.00 (BC) 480301.00 (BD) 480301.00 (BE) 480301.00 (BF) 480301.00 (BG) 480301.00 (BH) 480301.00 (BI) 480301.00 (BJ) 480301.00 (BK) 480301.00 (BL) 480301.00 (BM) 480301.00 (BN) 480301.00 (BO) 480301.00 (BP) 480301.00 (BQ) 480301.00 (BR) 480301.00 (BS) 480301.00 (BT) 480301.00 (BU) 480301.00 (BV) 480301.00 (BW) 480301.00 (BX) 480301.00 (BY) 480301.00 (BZ) 480301.00 (CA) 480301.00 (CB) 480301.00 (CC) 480301.00 (CD) 480301.00 (CE) 480301.00 (CF) 480301.00 (CG) 480301.00 (CH) 480301.00 (CI) 480301.00 (CJ) 480301.00 (CK) 480301.00 (CL) 480301.00 (CM) 480301.00 (CN) 480301.00 (CO) 480301.00 (CP) 480301.00 (CQ) 480301.00 (CR) 480301.00 (CS) 480301.00 (CT) 480301.00 (CU) 480301.00 (CV) 480301.00 (CW) 480301.00 (CX) 480301.00 (CY) 480301.00 (CZ) 480301.00 (DA) 480301.00 (DB) 480301.00 (DC) 480301.00 (DD) 480301.00 (DE) 480301.00 (DF) 480301.00 (DG) 480301.00 (DH) 480301.00 (DI) 480301.00 (DJ) 480301.00 (DK) 480301.00 (DL) 480301.00 (DM) 480301.00 (DN) 480301.00 (DO) 480301.00 (DP) 480301.00 (DQ) 480301.00 (DR) 480301.00 (DS) 480301.00 (DT) 480301.00 (DU) 480301.00 (DV) 480301.00 (DW) 480301.00 (DX) 480301.00 (DY) 480301.00 (DZ) 480301.00 (EA) 480301.00 (EB) 480301.00 (EC) 480301.00 (ED) 480301.00 (EE) 480301.00 (EF) 480301.00 (EG) 480301.00 (EH) 480301.00 (EI) 480301.00 (EJ) 480301.00 (EK) 480301.00 (EL) 480301.00 (EM) 480301.00 (EN) 480301.00 (EO) 480301.00 (EP) 480301.00 (EQ) 480301.00 (ER) 480301.00 (ES) 480301.00 (ET) 480301.00 (EU) 480301.00 (EV) 480301.00 (EW) 480301.00 (EX) 480301.00 (EY) 480301.00 (EZ) 480301.00 (FA) 480301.00 (FB) 480301.00 (FC) 480301.00 (FD) 480301.00 (FE) 480301.00 (FF) 480301.00 (FG) 480301.00 (FH) 480301.00 (FI) 480301.00 (FJ) 480301.00 (FK) 480301.00 (FL) 480301.00 (FM) 480301.00 (FN) 480301.00 (FO) 480301.00 (FP) 480301.00 (FQ) 480301.00 (FR) 480301.00 (FS) 480301.00 (FT) 480301.00 (FU) 480301.00 (FV) 480301.00 (FW) 480301.00 (FX) 480301.00 (FY) 480301.00 (FZ) 480301.00 (GA) 480301.00 (GB) 480301.00 (GC) 480301.00 (GD) 480301.00 (GE) 480301.00 (GF) 480301.00 (GG) 480301.00 (GH) 480301.00 (GI) 480301.00 (GJ) 480301.00 (GK) 480301.00 (GL) 480301.00 (GM) 480301.00 (GN) 480301.00 (GO) 480301.00 (GP) 480301.00 (GQ) 480301.00 (GR) 480301.00 (GS) 480301.00 (GT) 480301.00 (GU) 480301.00 (GV) 480301.00 (GW) 480301.00 (GX) 480301.00 (GY) 480301.00 (GZ) 480301.00 (HA) 480301.00 (HB) 480301.00 (HC) 480301.00 (HD) 480301.00 (HE) 480301.00 (HF) 480301.00 (HG) 480301.00 (HH) 480301.00 (HI) 480301.00 (HJ) 480301.00 (HK) 480301.00 (HL) 480301.00 (HM) 480301.00 (HN) 480301.00 (HO) 480301.00 (HP) 480301.00 (HQ) 480301.00 (HR) 480301.00 (HS) 480301.00 (HT) 480301.00 (HU) 480301.00 (HV) 480301.00 (HW) 480301.00 (HX) 480301.00 (HY) 480301.00 (HZ) 480301.00 (IA) 480301.00 (IB) 480301.00 (IC) 480301.00 (ID) 480301.00 (IE) 480301.00 (IF) 480301.00 (IG) 480301.00 (IH) 480301.00 (II) 480301.00 (IJ) 480301.00 (IK) 480301.00 (IL) 480301.00 (IM) 480301.00 (IN) 480301.00 (IO) 480301.00 (IP) 480301.00 (IQ) 480301.00 (IR) 480301.00 (IS) 480301.00 (IT) 480301.00 (IU) 480301.00 (IV) 480301.00 (IW) 480301.00 (IX) 480301.00 (IY) 480301.00 (IZ) 480301.00 (JA) 480301.00 (JB) 480301.00 (JC) 480301.00 (JD) 480301.00 (JE) 480301.00 (JF) 480301.00 (JG) 480301.00 (JH) 480301.00 (JI) 480301.00 (JJ) 480301.00 (JK) 480301.00 (JL) 480301.00 (JM) 480301.00 (JN) 480301.00 (JO) 480301.00 (JP) 480301.00 (JQ) 480301.00 (JR) 480301.00 (JS) 480301.00 (JT) 480301.00 (JU) 480301.00 (JV) 480301.00 (JW) 480301.00 (JX) 480301.00 (JY) 480301.00 (JZ) 480301.00 (KA) 480301.00 (KB) 480301.00 (KC) 480301.00 (KD) 480301.00 (KE) 480301.00 (KF) 480301.00 (KG) 480301.00 (KH) 480301.00 (KI) 480301.00 (KJ) 480301.00 (KL) 480301.00 (KM) 480301.00 (KN) 480301.00 (KO) 480301.00 (KP) 480301.00 (KQ) 480301.00 (KR) 480301.00 (KS) 480301.00 (KT) 480301.00 (KU) 480301.00 (KV) 480301.00 (KW) 480301.00 (KX) 480301.00 (KY) 480301.00 (KZ) 480301.00 (LA) 480301.00 (LB) 480301.00 (LC) 480301.00 (LD) 480301.00 (LE) 480301.00 (LF) 480301.00 (LG) 480301.00 (LH) 480301.00 (LI) 480301.00 (LJ) 480301.00 (LK) 480301.00 (LM) 480301.00 (LN) 480301.00 (LO) 480301.00 (LP) 480301.00 (LQ) 480301.00 (LR) 480301.00 (LS) 480301.00 (LT) 480301.00 (LU) 480301.00 (LV) 480301.00 (LW) 480301.00 (LX) 480301.00 (LY) 480301.00 (LZ) 480301.00 (MA) 480301.00 (MB) 480301.00 (MC) 480301.00 (MD) 480301.00 (ME) 480301.00 (MF) 480301.00 (MG) 480301.00 (MH) 480301.00 (MI) 480301.00 (MJ) 480301.00 (MK) 480301.00 (ML) 480301.00 (MN) 480301.00 (MO) 480301.00 (MP) 480301.00 (MQ) 480301.00 (MR) 480301.00 (MS) 480301.00 (MT) 480301.00 (MU) 480301.00 (MV) 480301.00 (MW) 480301.00 (MX) 480301.00 (MY) 480301.00 (MZ) 480301.00 (NA) 480301.00 (NB) 480301.00 (NC) 480301.00 (ND) 480301.00 (NE) 480301.00 (NF) 480301.00 (NG) 480301.00 (NH) 480301.00 (NI) 480301.00 (NJ) 480301.00 (NK) 480301.00 (NL) 480301.00 (NM) 480301.00 (NN) 480301.00 (NO) 480301.00 (NP) 480301.00 (NQ) 480301.00 (NR) 480301.00 (NS) 480301.00 (NT) 480301.00 (NU) 480301.00 (NV) 480301.00 (NW) 480301.00 (NX) 480301.00 (NY) 480301.00 (NZ) 480301.00 (OA) 480301.00 (OB) 480301.00 (OC) 480301.00 (OD) 480301.00 (OE) 480301.00 (OF) 480301.00 (OG) 480301.00 (OH) 480301.00 (OI) 480301.00 (OJ) 480301.00 (OK) 480301.00 (OL) 480301.00 (OM) 480301.00 (ON) 480301.00 (OO) 480301.00 (OP) 480301.00 (OQ) 480301.00 (OR) 480301.00 (OS) 480301.00 (OT) 480301.00 (OU) 480301.00 (OV) 480301.00 (OW) 480301.00 (OX) 480301.00 (OY) 480301.00 (OZ) 480301.00 (PA) 480301.00 (PB) 480301.00 (PC) 480301.00 (PD) 480301.00 (PE) 480301.00 (PF) 480301.00 (PG) 480301.00 (PH) 480301.00 (PI) 480301.00 (PJ) 480301.00 (PK) 480301.00 (PL) 480301.00 (PM) 480301.00 (PN) 480301.00 (PO) 480301.00 (PP) 480301.00 (PQ) 480301.00 (PR) 480301.00 (PS) 480301.00 (PT) 480301.00 (PU) 480301.00 (PV) 480301.00 (PW) 480301.00 (PX) 480301.00 (PY) 480301.00 (PZ) 480301.00 (QA) 480301.00 (QB) 480301.00 (QC) 480301.00 (QD) 480301.00 (QE) 480301.00 (QF) 480301.00 (QG) 480301.00 (QH) 480301.00 (QI) 480301.00 (QJ) 480301.00 (QK) 480301.00 (QL) 480301.00 (QM) 480301.00 (QN) 480301.00 (QO) 480301.00 (QP) 480301.00 (QQ) 480301.00 (QR) 480301.00 (QS) 480301.00 (QT) 480301.00 (QU) 480301.00 (QV) 480301.00 (QW) 480301.00 (QX) 480301.00 (QY) 480301.00 (QZ) 480301.00 (RA) 480301.00 (RB) 480301.00 (RC) 480301.00 (RD) 480301.00 (RE) 480301.00 (RF) 480301.00 (RG) 480301.00 (RH) 480301.00 (RI) 480301.00 (RJ) 480301.00 (RK) 480301.00 (RL) 480301.00 (RM) 480301.00 (RN) 480301.00 (RO) 480301.00 (RP) 480301.00 (RQ) 480301.00 (RR) 480301.00 (RS) 480301.00 (RT) 480301.00 (RU) 480301.00 (RV) 480301.00 (RW) 480301.00 (RX) 480301.00 (RY) 480301.00 (RZ) 480301.00 (SA) 480301.00 (SB) 480301.00 (SC) 480301.00 (SD) 480301.00 (SE) 480301.00 (SF) 480301.00 (SG) 480301.00 (SH) 480301.00 (SI) 480301.00 (SJ) 480301.00 (SK) 480301.00 (SL) 480301.00 (SM) 480301.00 (SN) 480301.00 (SO) 480301.00 (SP) 480301.00 (SQ) 480301.00 (SR) 480301.00 (SS) 480301.00 (ST) 480301.00 (SU) 480301.00 (SV) 480301.00 (SW) 480301.00 (SX) 480301.00 (SY) 480301.00 (SZ) 480301.00 (TA) 480301.00 (TB) 480301.00 (TC) 480301.00 (TD) 480301.00 (TE) 480301.00 (TF) 480301.00 (TG) 480301.00 (TH) 480301.00 (TI) 480301.00 (TJ) 480301.00 (TK) 480301.00 (TL) 480301.00 (TM) 480301.00 (TN) 480301.00 (TO) 480301.00 (TP) 480301.00 (TQ) 480301.00 (TR) 480301.00 (TS) 480301.00 (TT) 480301.00 (TU) 480301.00 (TV) 480301.00 (TW) 480301.00 (TX) 480301.00 (TY) 480301.00 (TZ) 480301.00 (UA) 4803