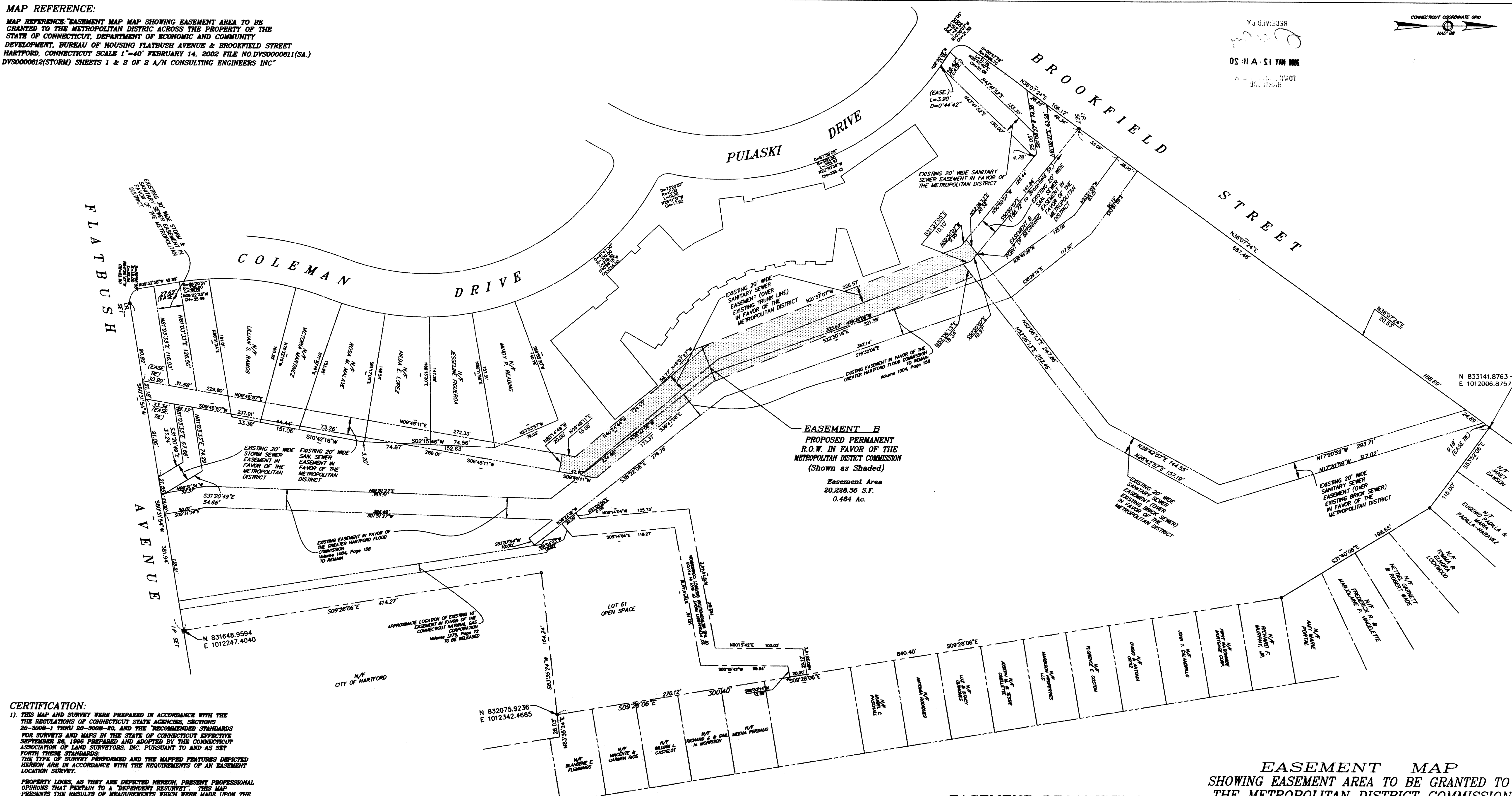
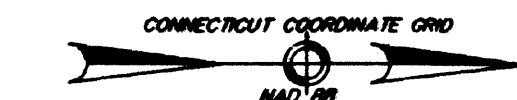


MAP REFERENCE:

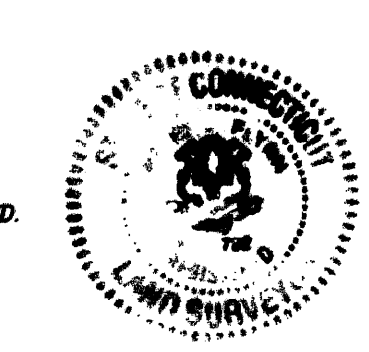
MAP REFERENCE: EASEMENT MAP SHOWING EASEMENT AREA TO BE GRANTED TO THE METROPOLITAN DISTRICT ACROSS THE PROPERTY OF THE STATE OF CONNECTICUT, DEPARTMENT OF ECONOMIC AND COMMUNITY DEVELOPMENT, BUREAU OF HOUSING FLATBUSH AVENUE & BROOKFIELD STREET HARTFORD, CONNECTICUT SCALE 1"=40' FEBRUARY 14, 2006 FILE NO.DVS0000811(SA.) DVS0000812(STORM) SHEETS 1 & 2 OF 2 A/N CONSULTING ENGINEERS INC

Y00V0305R  
05:11A S1YAN 0006  
A/N CONSULTING ENGINEERS INC  
HARTFORD, CT 06103



**CERTIFICATION:**  
1. THIS MAP AND SURVEY WERE PREPARED IN ACCORDANCE WITH THE REGULATIONS OF CONNECTICUT STATE AGENCIES, SECTIONS 20-300B-1 THRU 20-300B-20, AND THE RECOMMENDED STANDARDS FOR SURVEYS AND MAPS IN THE STATE OF CONNECTICUT EFFECTIVE SEPTEMBER 26, 1996 PREPARED AND ADOPTED BY THE CONNECTICUT ASSOCIATION OF LAND SURVEYORS, INC. PURSUANT TO AND AS SET FORTH THESE STANDARDS.  
THE TYPE OF SURVEY PERFORMED AND THE MAPPED FEATURES DEPICTED HEREON ARE IN ACCORDANCE WITH THE REQUIREMENTS OF AN EASEMENT LOCATION SURVEY.  
PROPERTY LINES, AS THEY ARE DEPICTED HEREON, PRESENT PROFESSIONAL OPINIONS THAT PERTAIN TO A "DEPENDENT RESURVEY". THIS MAP PRESENTS THE RESULTS OF MEASUREMENTS WHICH WERE MADE UPON THE GROUND IN ACCORDANCE WITH THE ACCURACY STANDARDS OF A CLASS A-2 SURVEY.  
2. THIS MAP AND SURVEY WERE PREPARED FOR METROPOLITAN DISTRICT COMMISSION. TO BE USED IN MATTERS THAT RELATE TO PROPOSED EASEMENTS. USE OF THIS MAP FOR OTHER PURPOSES OR BY OTHER PARTIES IS NOT AUTHORIZED OR VALID.  
3. NO DECLARATION IS EXPRESSED OR IMPLIED BY THIS MAP OR COPIES THEREOF UNLESS IT BEARS THE IMPRESSION TYPE SEAL AND ORIGINAL LIVE SEAL AND ORIGINAL LIVE SIGNATURE OF THE SURVEYOR WHOSE NAME AND REGISTRATION NUMBER APPEAR BELOW. ANY CHANGES MADE TO THIS PLAN WITHOUT THE KNOWLEDGE OF THE SIGNERS INVALIDATES THESE DECLARATIONS.

TO THE BEST OF MY KNOWLEDGE AND BELIEF THIS MAP IS SUBSTANTIALLY CORRECT AS NOTED HEREON.  
*Peter D. Flynn* 4-6-6  
PETER D. FLYNN CT.L.L.S. #8702 DATE  
NOT VALID UNLESS ORIGINAL SIGNATURE, LIVE STAMP, & RAISED SEAL ARE AFFIXED.  
FLYNN & CYR LAND SURVEYING LLC  
578 BELDEN TURNPIKE 060-686-7886  
BURLINGTON, CONNECTICUT 06037

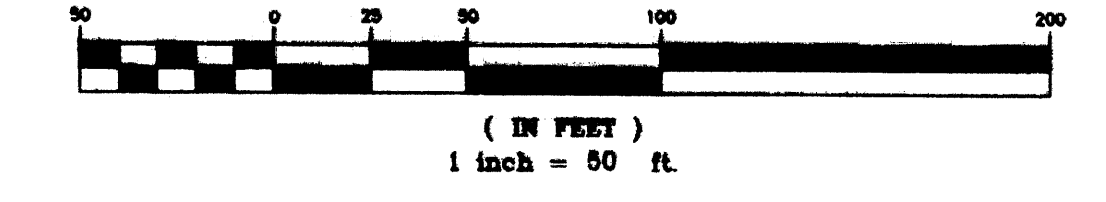


INDICATED UNDERGROUND UTILITIES ARE BASED ON AVAILABLE DATA. THE LOCATIONS ARE APPROXIMATE AND ALL UTILITIES MAY NOT BE SHOWN. PRIOR TO CONSTRUCTION, CONTRACTOR SHALL CALL 1-800-922-4455 AND HAVE ALL UTILITIES MARKED.  
THIS DRAWING HAS BEEN PREPARED BASED, IN PART, ON INFORMATION PROVIDED BY OTHERS RELATING TO THE LOCATION OF UNDERGROUND SERVICES. WE CANNOT VERIFY THE ACCURACY OF THIS INFORMATION AND SHALL NOT BE HELD RESPONSIBLE FOR ANY ERRORS OR OMISSIONS, WHICH MAY BE INCORPORATED HEREIN AS A RESULT.

**EASEMENT DESCRIPTION:**

Beginning at a point which is S80°50'07"E a distance of 168.72 feet from the true pin set at an angle point along the east street of Brookfield Street. Being further bounded and described as follows:  
Thence S50°50'07"E a Distance of 10.57' to a Point;  
Thence S21°37'05"E a Distance of 10.10' to a Point;  
Thence N52°06'13"E a Distance of 18.34' to a Point;  
Thence S22°30'16"E a Distance of 321.39' to a Point;  
Thence S39°47'08"E a Distance of 173.37' to a Point;  
Thence S09°45'11"W a Distance of 42.87' to a Point;  
Thence N80°14'49"W a Distance of 20.00' to a Point;  
Thence N09°45'11"E a Distance of 15.00' to a Point;  
Thence N40°24'44"W a Distance of 124.92' to a Point;  
Thence N46°07'27"W a Distance of 59.77' to a Point;  
Thence N21°37'07"W a Distance of 326.57' to a Point;  
Thence N50°50'07"E a Distance of 9.95' to a Point;  
Thence N52°06'13"E a Distance of 20.52' to the Point and place of beginning.  
Said Easement contains 22,228.36 Square Feet or 0.464 Acres.

**EASEMENT MAP**  
SHOWING EASEMENT AREA TO BE GRANTED TO THE METROPOLITAN DISTRICT COMMISSION ACROSS THE PROPERTY OF THE CITY OF HARTFORD  
BREAKTHROUGH MAGNET SCHOOL  
#290 BROOKFIELD STREET  
HARTFORD, CONNECTICUT  
SCALE 1"=50' DATE: MAR. 22, 2006  
Rev. 4-6-06  
GRAPHIC SCALE



FILE NO.DVS (0000917)