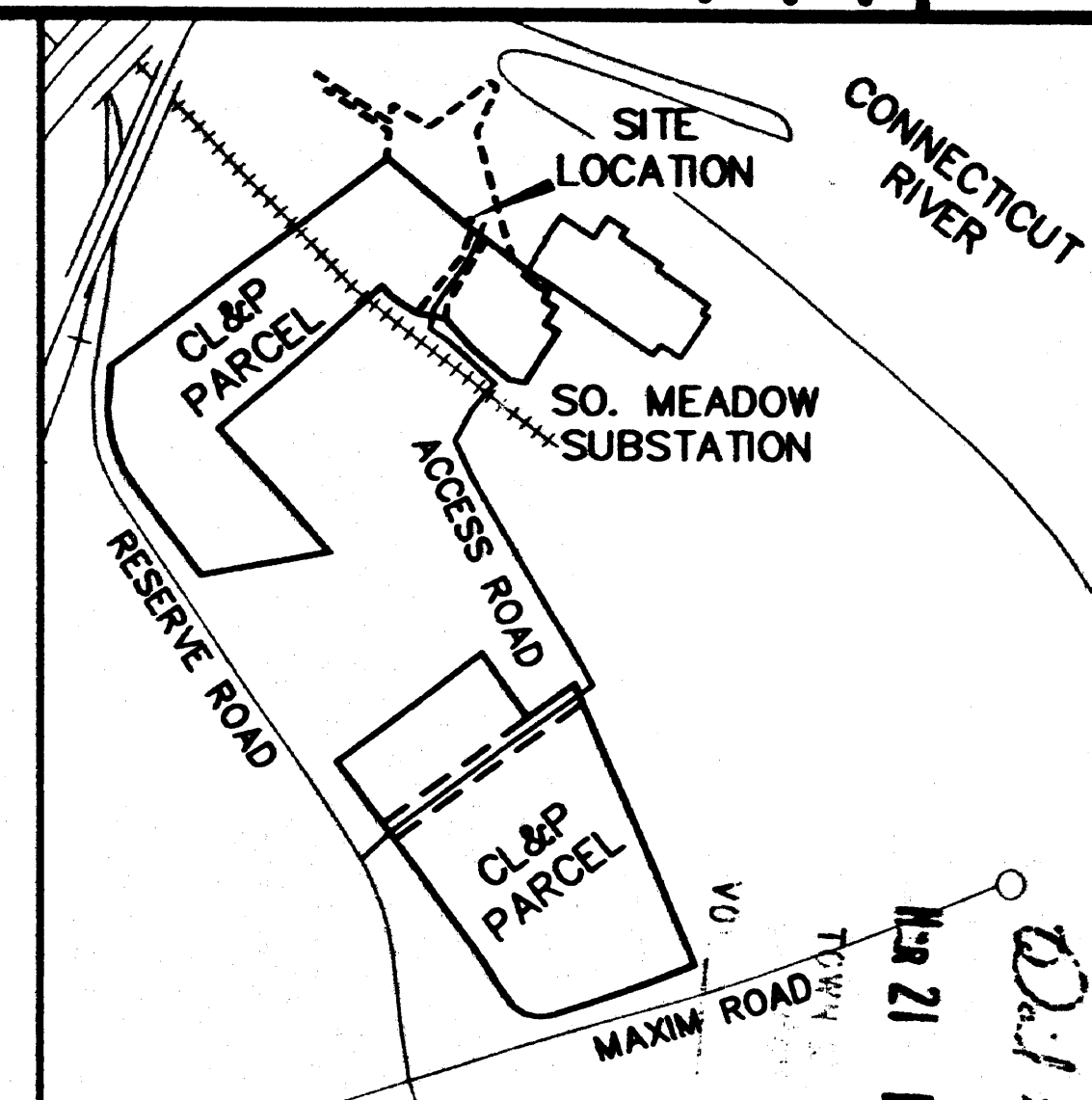
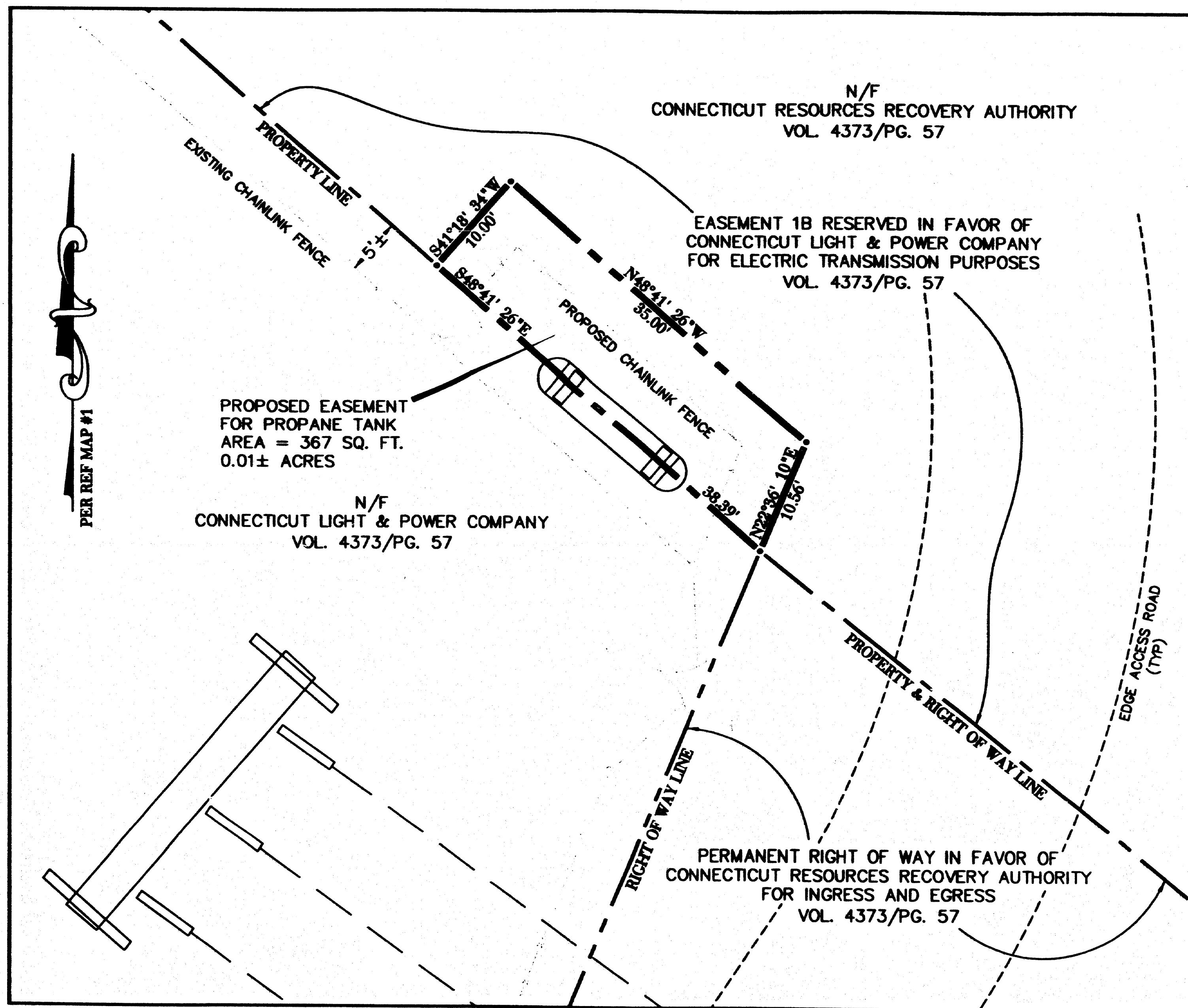


#2814



LOCATION MAP/NOT TO SCALE

RECEIVED BY
11:38 PM '06
H221

MAP NOTES:

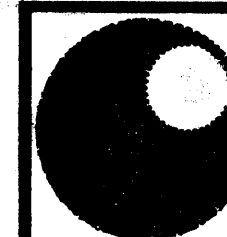
1. THIS MAP HAS BEEN PREPARED PURSUANT TO THE REGULATIONS OF CONNECTICUT STATE AGENCIES SECTIONS 20-300b-1 THROUGH 20-300b-20 AND THE "STANDARD FOR SURVEYS AND MAPS IN THE STATE OF CONNECTICUT" AS ADOPTED BY THE CONNECTICUT ASSOCIATION OF LAND SURVEYORS INC. ON SEPTEMBER 26, 1996.

THIS PLAN WAS COMPILED FROM OTHER MAPS, RECORD RESEARCH, LIMITED FIELD WORK OR OTHER SOURCES OF INFORMATION. IT IS NOT TO BE CONSTRUED AS HAVING BEEN OBTAINED AS THE RESULT OF A FIELD SURVEY, AND IS SUBJECT TO SUCH CHANGE AS AN ACCURATE FIELD SURVEY MAY DISCLOSE.

2. THIS SURVEY CONFORMS TO A CLASS "D" HORIZONTAL ACCURACY AND IS INTENDED TO ACQUIRE EASEMENT.

MAP REFERENCES:

1. "MAP SHOWING PROPERTY OF THE CONNECTICUT LIGHT & POWER COMPANY TO BE CONVEYED TO CONNECTICUT RESOURCE RECOVERY AUTHORITY MAXIM & RESERVE ROADS HARTFORD, CONNECTICUT" SCALE: 1"=100' DATE: DEC. 15, 2000



NORTHEAST UTILITIES SERVICE CO.

FOR THE CONNECTICUT LIGHT & POWER COMPANY
BERLIN, CONNECTICUT

TITLE

COMPILATION MAP
DEPICTING EASEMENT TO BE ACQUIRED FROM
CONNECTICUT RESOURCES RECOVERY AUTHORITY
MAXIM & RESERVE ROADS, HARTFORD, CONNECTICUT

BY SMK	CHKD RRH	REV	REV
DATE 1/16/06	DATE 1/16/06	REV	REV
SCALE 1"=10'	MICROFILM DATE	DWG. NO.	22416
		PROJ. 63-3.610	V.S. R-1-98

TO THE BEST OF MY KNOWLEDGE AND BELIEF THIS MAP IS
SUBSTANTIALLY CORRECT AS NOTED HEREON.

R. Richard Howard 2/13/2006
R. RICHARD HOWARD LS #17249

MAP SCALE



(IN FEET)
1 inch = 10 ft.

This drawing reproduced in
accordance with state filing
regulations. The process
used is fixed-line photo.
Joseph Merritt & Company

#2814

0 INCHES 1 2 3 4