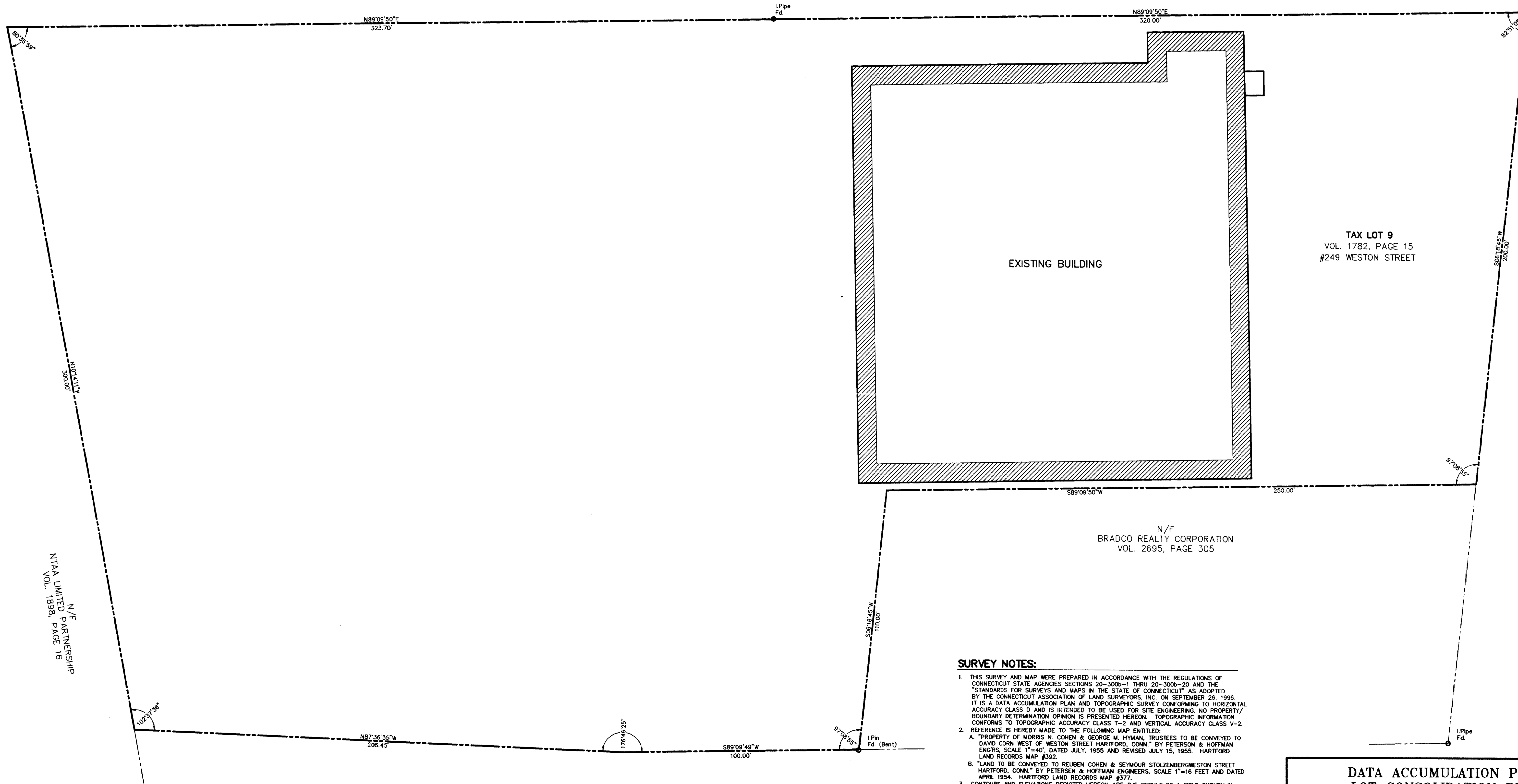


N/F  
PR ASSOCIATES  
VOL. 3401, PAGE 231



**SURVEY NOTES:**

- THIS SURVEY AND MAP WERE PREPARED IN ACCORDANCE WITH THE REGULATIONS OF CONNECTICUT STATE AGENCIES SECTIONS 20-300B-1 THRU 20-300B-20 AND THE "STANDARDS FOR SURVEYS AND MAPS IN THE STATE OF CONNECTICUT" AS ADOPTED BY THE CONNECTICUT ASSOCIATION OF LAND SURVEYORS, INC. ON SEPTEMBER 26, 1996. IT IS A DATA ACCUMULATION PLAN AND TOPOGRAPHIC SURVEY CONFORMING TO HORIZONTAL ACCURACY CLASS D AND IS INTENDED TO BE USED FOR SITE ENGINEERING. NO PROPERTY/BOUNDARY DETERMINATION OPINION IS PRESENTED HEREON. TOPOGRAPHIC INFORMATION CONFORMS TO TOPOGRAPHIC ACCURACY CLASS T-2 AND VERTICAL ACCURACY CLASS V-2.
- REFERENCE IS HEREBY MADE TO THE FOLLOWING MAP ENTITLED:  
A. "PROPERTY OF MORRIS N. COHEN & GEORGE M. HYMAN, TRUSTEES TO BE CONVEYED TO DAVID CORN WEST OF WESTON STREET HARTFORD, CONN." BY PETERSON & HOFFMAN ENGINEERS, SCALE 1"=40', DATED JULY, 1965 AND REVISED JULY 15, 1955. HARTFORD LAND RECORDS MAP #392.  
B. "LAND TO BE CONVEYED TO REUBEN COHEN & SEYMOUR STOLZENBERG WESTON STREET HARTFORD, CONN." BY PETERSEN & HOFFMAN ENGINEERS, SCALE 1"=16 FEET AND DATED APRIL 1954. HARTFORD LAND RECORDS MAP #377.
- CONTOURS AND ELEVATIONS DEPICTED HEREON ARE THE RESULT OF A FIELD SURVEY IN DECEMBER 2004 BASED ON AN ASSUMED DATUM.

FOR LOCATION OF UNDERGROUND UTILITIES AND OTHER FACILITIES CONTACT CALL BEFORE YOU DIG AT 1-800-922-4455.

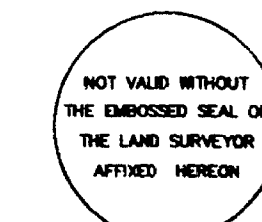
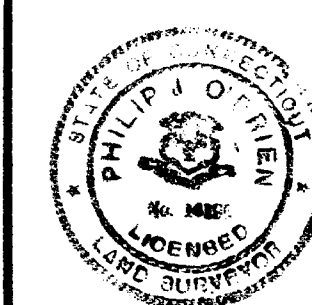
NO.	DATE	PER CITY COMMENTS	BY
1	4/6/05		JT

COPYRIGHT © 2005 BY O'BRIEN ASSOCIATES, INC. ALL RIGHTS RESERVED. THIS DOCUMENT OR ANY PART THEREOF MAY NOT BE REPRODUCED OR UTILIZED IN ANY FORM WITHOUT WRITTEN PERMISSION OF O'BRIEN ASSOCIATES, INC.

THIS MAP PRODUCED BY  
ORIGINAL INK DRAWING ON  
POLY FIRM OR LINEAR  
O'BRIEN ASSOCIATES, INC.  
83 MOUNTAIN LAUREL DR.  
MIDDLETOWN, CT 06457

TO THE BEST OF MY KNOWLEDGE AND BELIEF THIS  
MAP IS SUBSTANTIALLY CORRECT AS NOTED HEREON

Philip J. O'Brien  
L.S. #14196



**DATA ACCUMULATION PLAN  
LOT CONSOLIDATION PLAN**  
TAX LOTS 9 & 10  
LAND NOW OR FORMERLY OF  
BRADCO REALTY CORPORATION  
241 & 249 WESTON STREET  
HARTFORD, CONNECTICUT

PREPARED BY:	O'BRIEN ASSOCIATES, INC. 83 MOUNTAIN LAUREL DRIVE, MIDDLETOWN, CONN. (860) 345-7511 FAX (860) 345-7522		
SCALE 1"=20'	DATE MARCH 28, 2005	FILE 2870	SHEET 1 OF 1

