INSET MAP
(NOT TO SCALE)

NOTES:

1. THIS SURVEY HAS BEEN PREPARED PURSUANT TO THE REGULATIONS OF CONNECTICUT STATE AGENCIES SECTIONS 20-300b-1 THROUGH 20-300b-20 AND THE STANDARDS FOR SURVEYS AND MAPS IN THE STATE OF CONNECTICUT AS ADOPTED BY THE CONNECTICUT ASSOCIATION OF LAND SURVEYORS, INC. ON SEPTEMBER 26, 1996.
2. THIS IS A RIGHT OF WAY SURVEY INTENDED TO DEPICT LAND ACQUIRED FROM THE STATE OF CONNECTICUT OFFICE OF POLICY AND MANAGEMENT BY THE STATE OF CONNECTICUT.
3. THIS MAP FALLS INTO THE RESURVEY BOUNDARY DETERMINATION CATEGORY.
4. THIS SURVEY CONFORMS TO CLASS A-2 ACCURACY STANDARDS FOR BASELINES AND PROPERTY LINES. PROPOSED CONDITIONS DEPICTED HEREON CONFORM TO CLASS D ACCURACY STANDARDS.
5. EXISTING UNDERGROUND UTILITIES ARE NOT DEPICTED HEREON.
6. THE BASELINE DEPICTED HEREON WAS OBTAINED FROM URS CORPORATION.
7. BEARINGS AND COORDINATES DEPICTED HEREON REFER TO THE 1983 NORTH AMERICAN DATUM (NAD83) AND THE 1988 NORTH AMERICAN VERTICAL DATUM (NAVD88). CONNECTICUT GEODETIC SURVEY STATION SCHOOL HOUSE HILL N=800,733.653, E=1,018,876.392 AND ELEVATION = 245.587 FEET AND CONNECTICUT GEODETIC SURVEY STATION 5497X N=841,061.913, E=1,017,432.118 WERE USED FOR ORIENTATION.

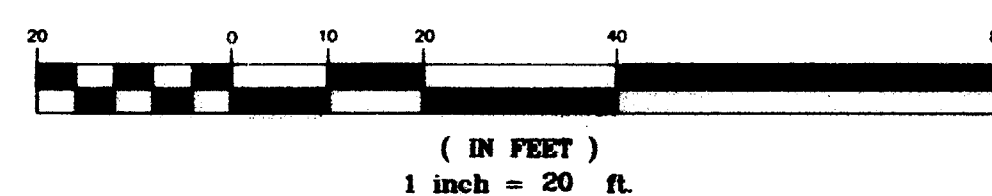
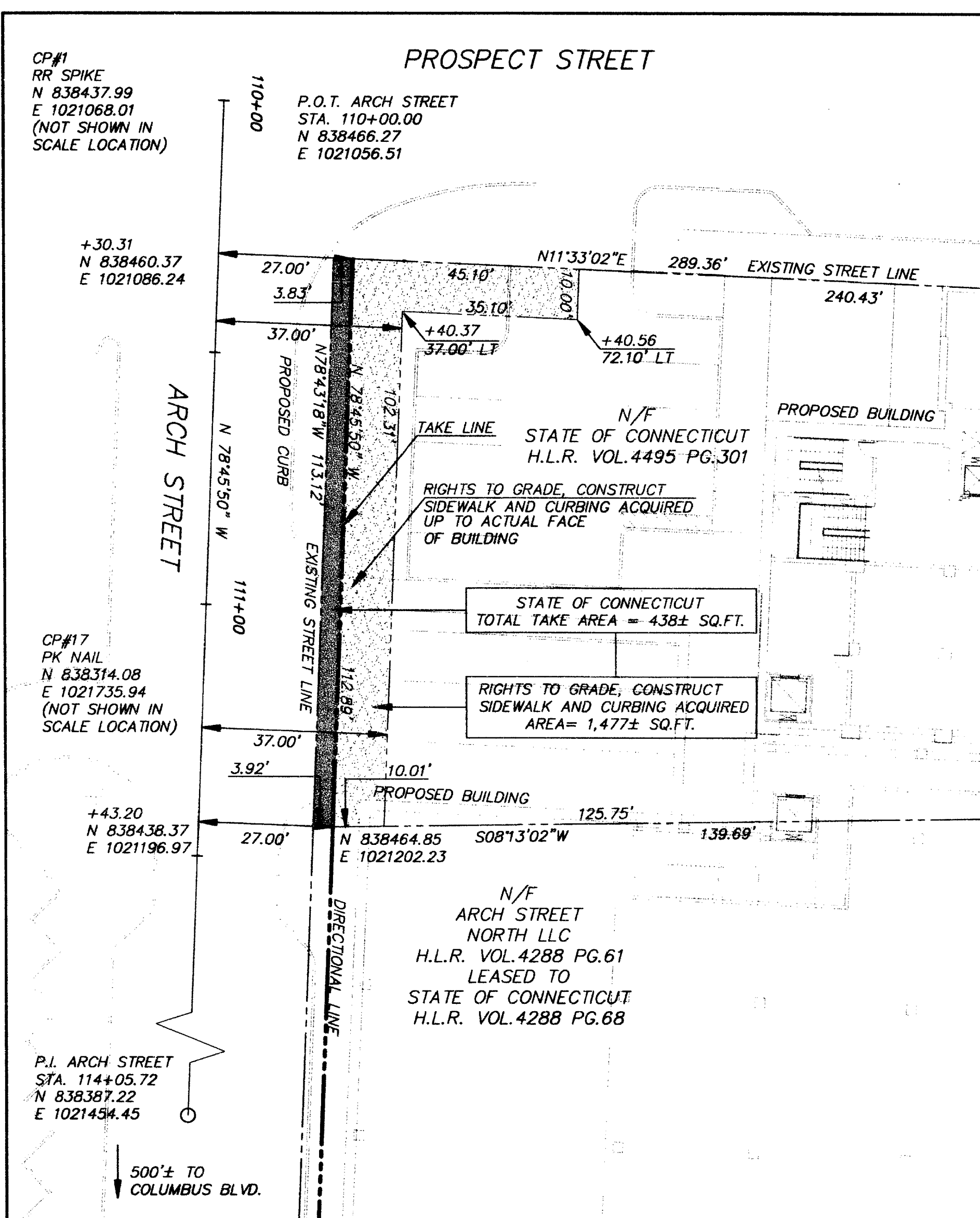
MAP REFERENCES:

1. ALTA/ACSM LAND TITLE SURVEY STREET LINE PLAN PREPARED FOR STATE OF CONNECTICUT COMMERCIAL STREET, ELLERY STREET, KENY LANE, MECHANIC STREET, POTTER STREET, DISCONTINUED PORTION OF POTTER STREET HARTFORD, CONNECTICUT DATED 12-15-00 SCALE 1"= 60' SHEET 1 OF 1 F.A. HESKETH & ASSOCIATES, INC.
2. RIGHT OF WAY SURVEY TOWN OF HARTFORD MAP SHOWING LAND TRANSFERRED FROM STATE OF CONNECTICUT OFFICE OF POLICY AND MANAGEMENT TO THE STATE OF CONNECTICUT DEPARTMENT OF TRANSPORTATION REPLACEMENT OF COLUMBUS BOULEVARD BRIDGE SCALE 1"= 20' AUGUST 2001 JAMES F. BYRNES, JR. TRANSPORTATION CHIEF ENGINEER BUREAU OF ENGINEERING AND HIGHWAY OPERATIONS.
3. ALTA/ACSM LAND TITLE SURVEY PERIMETER SURVEY PREPARED FOR ADRIAN'S LANDING DOWNTOWN HARTFORD, CONNECTICUT JANUARY 15, 2003 SCALE 1"= 80' SHEETS 1-6 OF 6 F.A. HESKETH & ASSOC. INC.

LEGEND
(SYMBOLS NOT TO SCALE)

- = I.P. PROPERTY CORNER
- ⊙ = MONUMENT
- ⊕ = DRILL HOLE
- △ = SURVEY CONTROL POINT
- P.O.B. = POINT OF BEGINNING
- N = NORTHING
- E = EASTING
- N/F = NOW OR FORMERLY
- H.L.R. = HARTFORD LAND RECORDS
- Δ = DELTA ANGLE
- R = RADIUS
- T = TANGENT
- L = LENGTH
- C = CHORD
- CB = CHORD BEARING
- F.Y. = FRONT YARD
- S.Y. = SIDE YARD
- R.Y. = REAR YARD
- C.P. = CONTROL POINT

GRAPHIC SCALE

(IN FEET)
1 inch = 20 ft.TO MY KNOWLEDGE AND BELIEF THIS MAP IS SUBSTANTIALLY CORRECT
AS NOTED HEREON.THIS MAP IS NOT VALID WITHOUT THE LINE SIGNATURE AND IMPRESSION
TYPE SEAL OF THE LAND SURVEYOR WHOSE SIGNATURE APPEARS HEREON

TODD S. HESKETH LS #17945

 TOWN NO. 63
 PROJECT NO. 602
 SERIAL NO. 2
 SHEET 2 OF 2

DATE	REVISION	REQ. BY

 This document was produced in
 accordance with state filing
 regulations. The process
 used is fixed-line photo.
 Joseph Merritt & Company

 THIS MAP PREPARED BY:
 F.A. HESKETH & ASSOCIATES, INC.
 6 CREAMERY BROOK
 EAST GRANBY, CONNECTICUT 06026
 JOB #96007

RIGHT OF WAY SURVEY

 TOWN OF HARTFORD
 MAP SHOWING LAND ACQUIRED FROM
 STATE OF CONNECTICUT
 OFFICE OF POLICY AND MANAGEMENT

 BY
 STATE OF CONNECTICUT
 DEPARTMENT OF TRANSPORTATION
 WIDENING AND RECONSTRUCTION OF
 COLUMBUS BOULEVARD

 SCALE 1"= 20' OCTOBER 2003
 ARTHUR W. GRUHN P.E. TRANSPORTATION CHIEF ENGINEER
 BUREAU OF ENGINEERING AND HIGHWAY OPERATIONS
