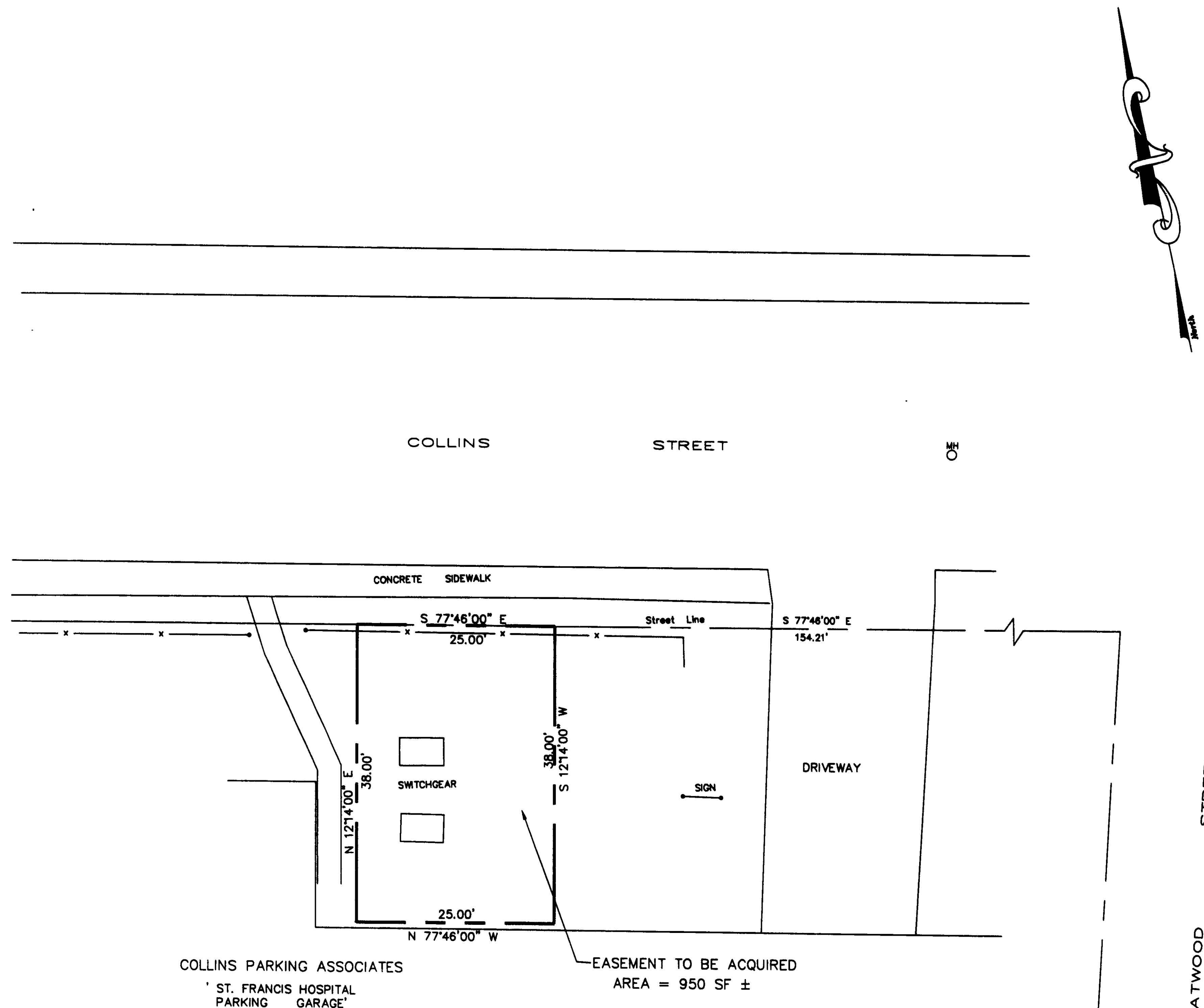


The portion of Collins St.  
shown on this map is an  
established public street of  
The City of Hartford  
*Paul* 5/1/02  
O. Blunt  
Survey Supervisor

REVIEWED BY  
DATE  
7/1/02

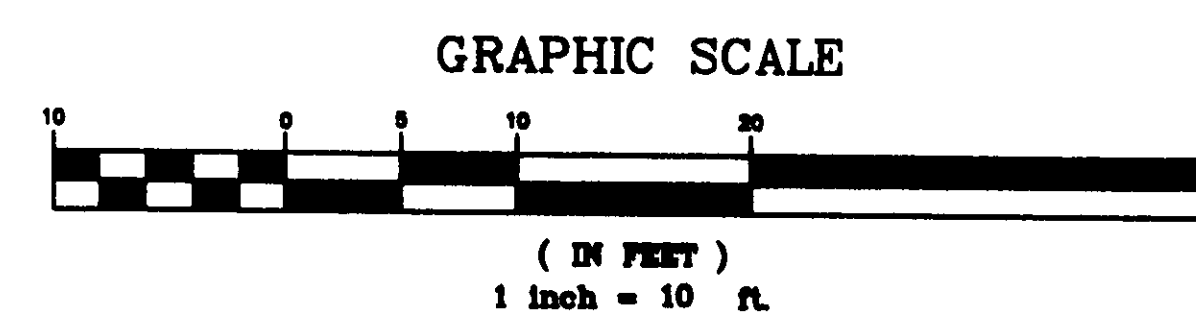


NOTES:

- 1.) THIS MAP HAS BEEN PREPARED PURSUANT TO THE REGULATIONS OF CONNECTICUT STATE AGENCIES SECTIONS 20-300b-1 THROUGH 20-300b-20 AND THE "STANDARD FOR SURVEYS AND MAPS IN THE STATE OF CONNECTICUT" AS ADOPTED BY THE CONNECTICUT ASSOCIATION OF LAND SURVEYORS INC. ON SEPTEMBER 26, 1996.
- THIS SURVEY CONFORMS TO A CLASS "D" HORIZONTAL ACCURACY AND IS INTENDED TO ACQUIRE EASEMENT
- "THIS PLAN WAS COMPILED FROM OTHER MAPS, FIELD SURVEY, RECORD RESEARCH OR OTHER SOURCE OF INFORMATION. IT IS NOT TO BE CONSTRUED AS HAVING BEEN OBTAINED AS THE RESULT OF A FIELD SURVEY, AND IS SUBJECT TO SUCH CHANGE AS AN ACCURATE FIELD SURVEY MAY DISCLOSE."

TO THE BEST OF MY KNOWLEDGE AND BELIEF THIS MAP IS SUBSTANTIALLY CORRECT AS NOTED HEREON.

*Elliott F. Fuller, Jr.*  
ELLIOTT F. FULLER, JR. PELS #12328



This drawing is produced in accordance with state filing regulations. Process used:  
☐ Wash-off ☒ Fixed-line photo  
Joseph Merritt & Company

CO  
GENERATED  
DWG  
MAKE NO  
MANUAL  
CHANGES

Project No. 489701			
NORTHEAST UTILITIES SERVICE CO. FOR THE CONNECTICUT LIGHT & POWER COMPANY BERLIN, CONNECTICUT			
TITLE COMPILED PLAN SHOWING EASEMENT TO BE ACQUIRED FROM COLLINS PARKING ASSOCIATES HARTFORD, CONNECTICUT			
BY E.F.F.	CHKD	REV	REV
DATE 03/15/01	DATE	REV	REV
SCALE 1" = 10'	MICROFILM DATE	DWG. NO. 51127A	
PROJ. 63-8-CLAP V.S. H-7-3-B			

