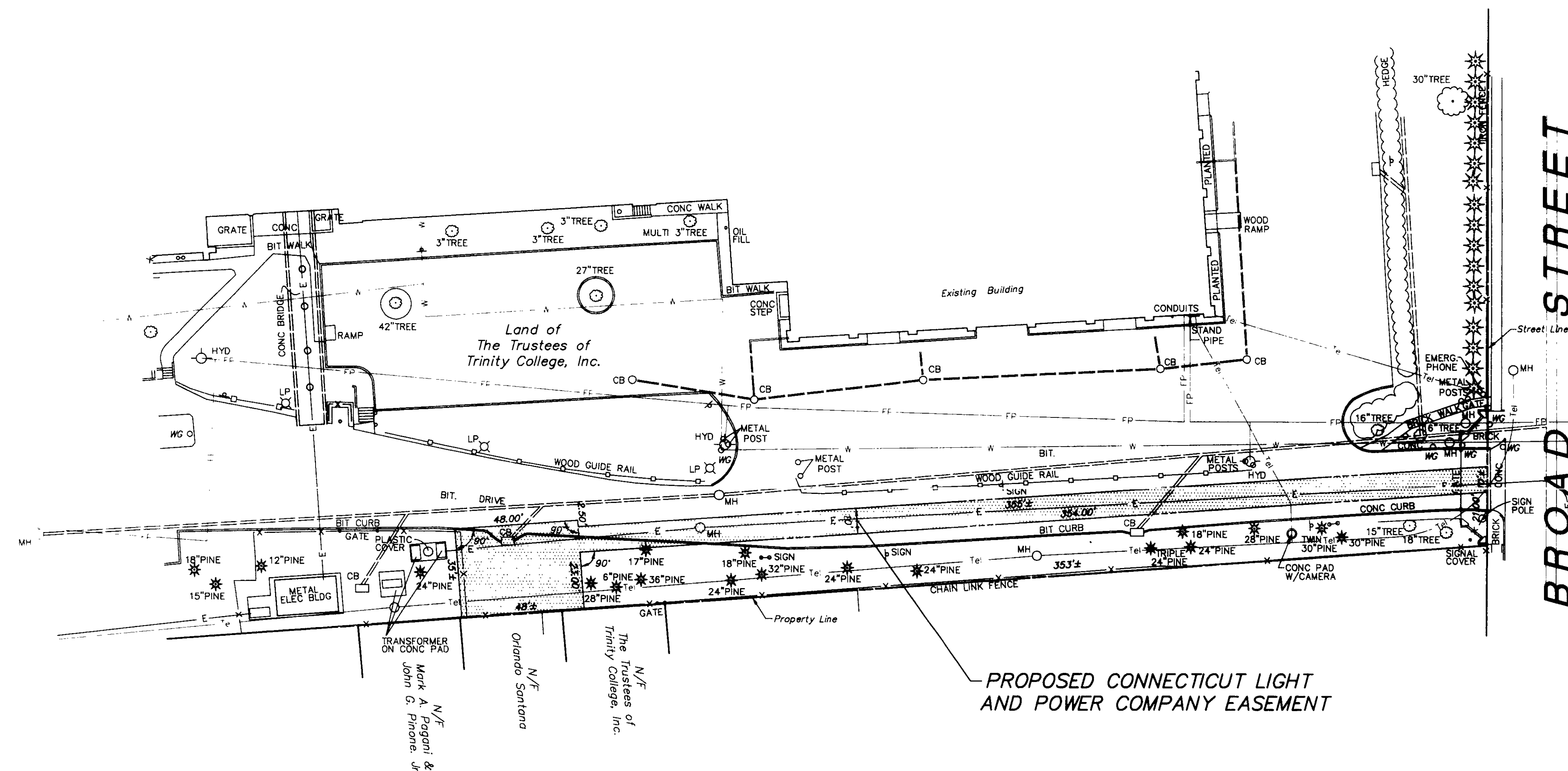


2508

#2508

Trinity College  
13 6/2  
12/14/01  
O. J. J.  
Survey Engineer



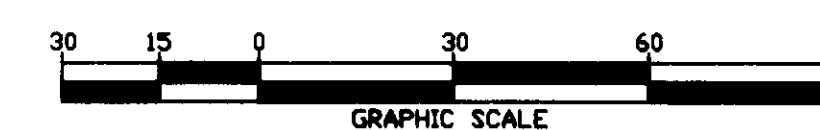
PROPOSED CONNECTICUT LIGHT  
AND POWER COMPANY EASEMENT

## NOTES:

1. THIS SURVEY AND MAP HAS BEEN PREPARED IN ACCORDANCE WITH THE REGULATIONS OF CONNECTICUT STATE AGENCIES, SECTIONS 20-300b-1 THRU 20-300b-20, AND THE "STANDARDS FOR SURVEYS AND MAPS IN THE STATE OF CONNECTICUT" ADOPTED BY THE CONNECTICUT ASSOCIATION OF LAND SURVEYORS, INC. ON SEPTEMBER 26, 1996. THIS IS A COMPILATION PLAN PREPARED TO CLASS D STANDARDS. THIS PLAN WAS COMPILED FROM OTHER MAPS, RECORD RESEARCH OR OTHER SOURCES OF INFORMATION. IT IS NOT TO BE CONSTRUED AS HAVING BEEN OBTAINED AS THE RESULT OF A FIELD SURVEY, AND IS SUBJECT TO SUCH CHANGE AS AN ACCURATE FIELD SURVEY MAY DISCLOSE.
2. UNDERGROUND UTILITY, STRUCTURE AND FACILITY LOCATIONS DEPICTED HEREON HAVE BEEN COMPILED, IN PART, FROM RECORD MAPPING AND OTHER DATA SUPPLIED BY THE RESPECTIVE UTILITY COMPANIES, GOVERNMENTAL AGENCIES AND/OR OTHER SOURCES. THESE LOCATIONS MUST BE CONSIDERED APPROXIMATE IN NATURE. ADDITIONALLY, OTHER SUCH FEATURES MAY EXIST ON THE SITE, THE EXISTENCE OF WHICH ARE UNKNOWN TO URS CORPORATION AES. THE EXISTENCE, SIZE AND LOCATION OF ALL SUCH FEATURES MUST BE DETERMINED AND VERIFIED IN THE FIELD BY THE APPROPRIATE AUTHORITIES PRIOR TO CONSTRUCTION. CALL BEFORE YOU DIG 1-800-922-4455.

THIS DRAWING WAS REPRODUCED IN  
ACCORDANCE WITH STATE FILING  
REGULATIONS PROCESS USED  
ORIGINAL INK ON MYLAR  
URS CORPORATION AES

COMPILATION PLAN  
MAP SHOWING EASEMENT AREA TO BE GRANTED TO  
**THE CONNECTICUT LIGHT AND POWER COMPANY**  
ACROSS THE PROPERTY OF  
**THE TRUSTEES OF TRINITY COLLEGE, INC.**  
BROAD STREET  
HARTFORD, CONNECTICUT



No.	Date	Revision description
1	1-05-01	Underground Utilities Added

TO MY KNOWLEDGE AND BELIEF THIS MAP IS  
SUBSTANTIALLY CORRECT AS NOTED HEREON

MICHAEL G. WILMES, L.S.

LICENSE NO. 14206

TRUE AND VALID COPIES OF THIS MAP OR PLAN MUST BEAR THE ORIGINAL  
SIGNATURE AND EMBOSSED SEAL OF THE ABOVE NAMED LAND SURVEYOR.  
UNAUTHORIZED REPRODUCTION OR ALTERATION IS FORBIDDEN.

Embossed seal

CL&P FILE# C0113

**URS**

Scale: 1" = 30'  
Date: 1 DECEMBER 2000

Field book #

3632

Drawn by

S. KALINKA

Surveying and Mapping by  
**URS Corporation**  
500 Enterprise Drive, Suite 3B  
Rocky Hill, Connecticut 06067-4002  
Tel. (860) 529-8882

Project #

F3-00001753.24

Map File #

T143-44



#2508