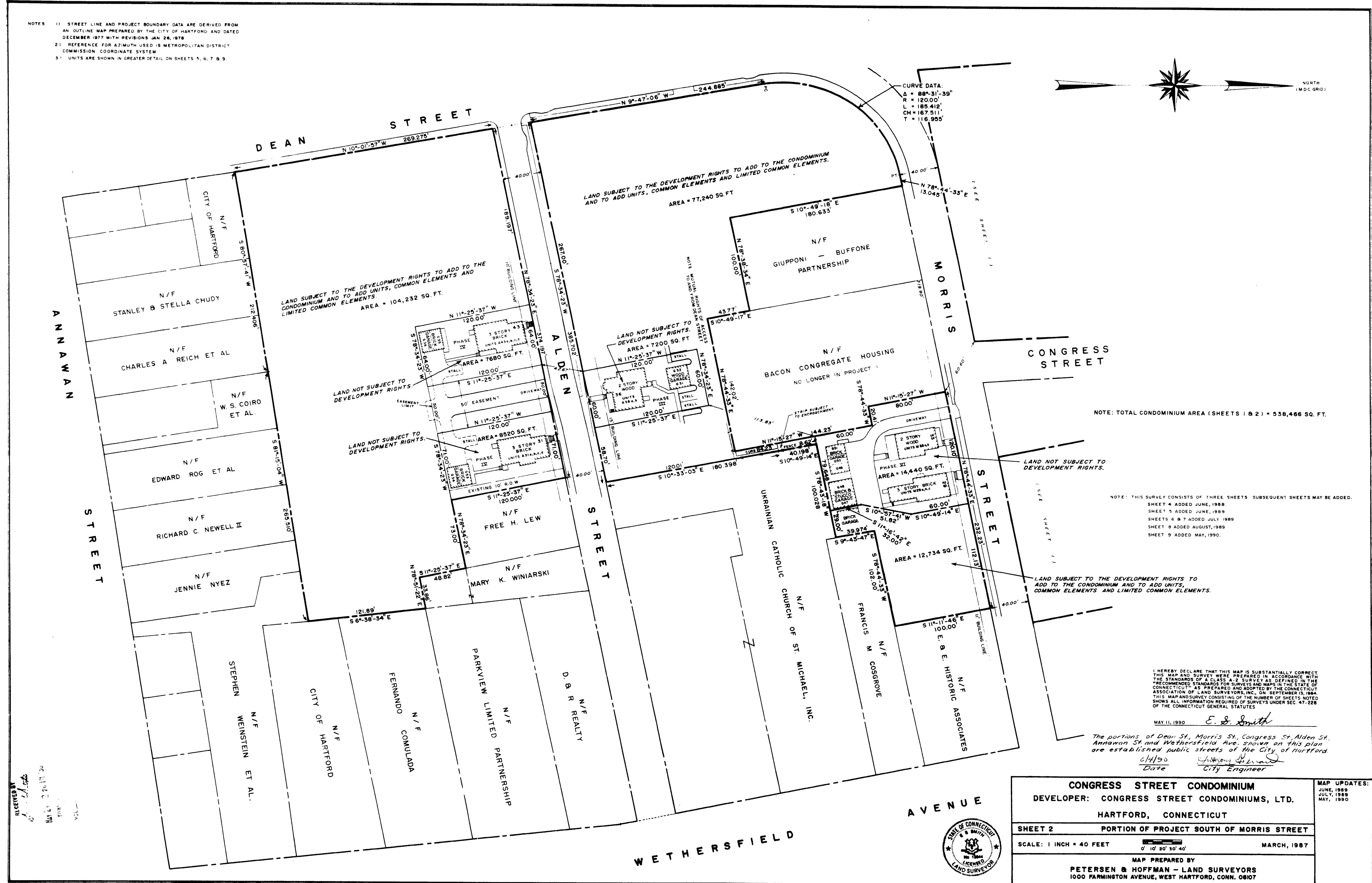
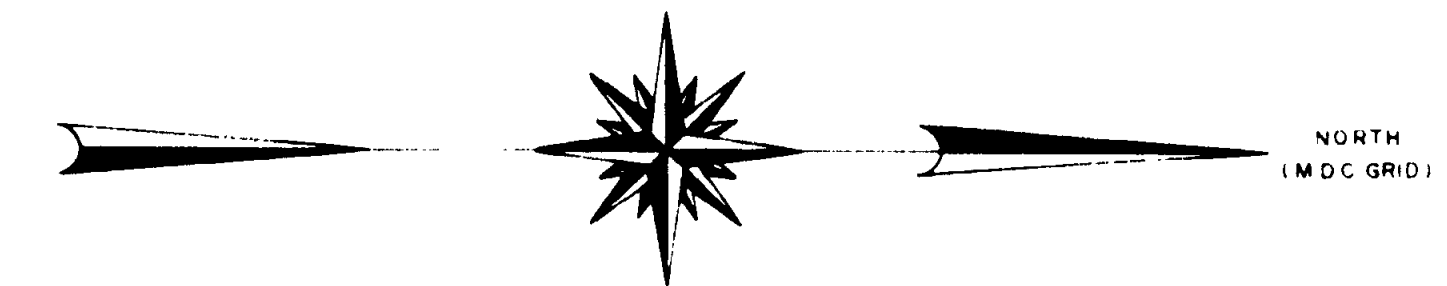


- NOTES
1. STREET LINE AND PROJECT BOUNDARY DATA ARE DERIVED FROM AN OUTLINE MAP PREPARED BY THE CITY OF HARTFORD AND DATED DECEMBER 1977 WITH REVISIONS JAN 28, 1978
 2. REFERENCE FOR AZIMUTH USED IS METROPOLITAN DISTRICT COMMISSION COORDINATE SYSTEM
 3. UNITS ARE SHOWN IN GREATER DETAIL ON SHEETS 5, 6, 7 & 9



1926

RECEIVED
MAY 11 1990
CITY OF HARTFORD



CONGRESS STREET CONDOMINIUM	
DEVELOPER: CONGRESS STREET CONDOMINIUMS, LTD.	
HARTFORD, CONNECTICUT	
SHEET 2 PORTION OF PROJECT SOUTH OF MORRIS STREET	
SCALE: 1 INCH = 40 FEET	MARCH, 1987
MAP PREPARED BY PETERSEN & HOFFMAN - LAND SURVEYORS 1000 FARMINGTON AVENUE, WEST HARTFORD, CONN. 06107	
MAP UPDATES: JUNE, 1989 JULY, 1989 MAY, 1990	

1926 106