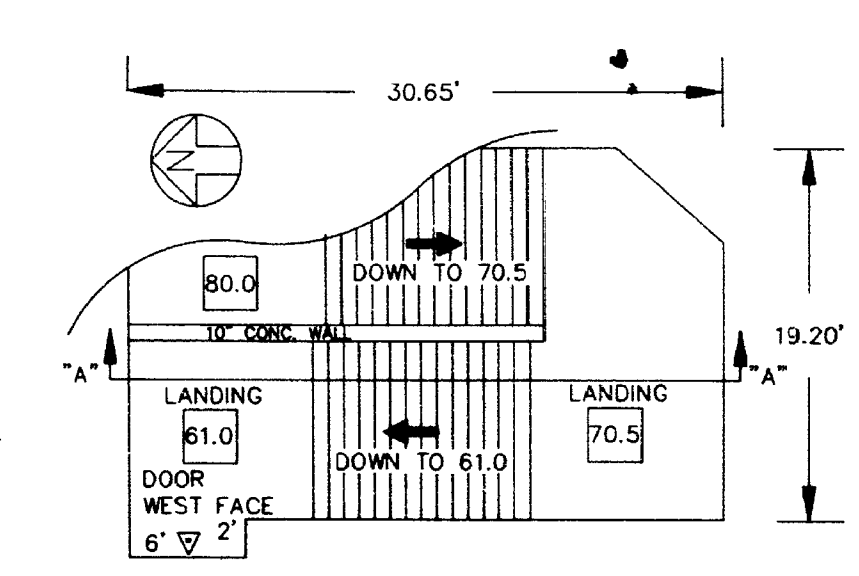
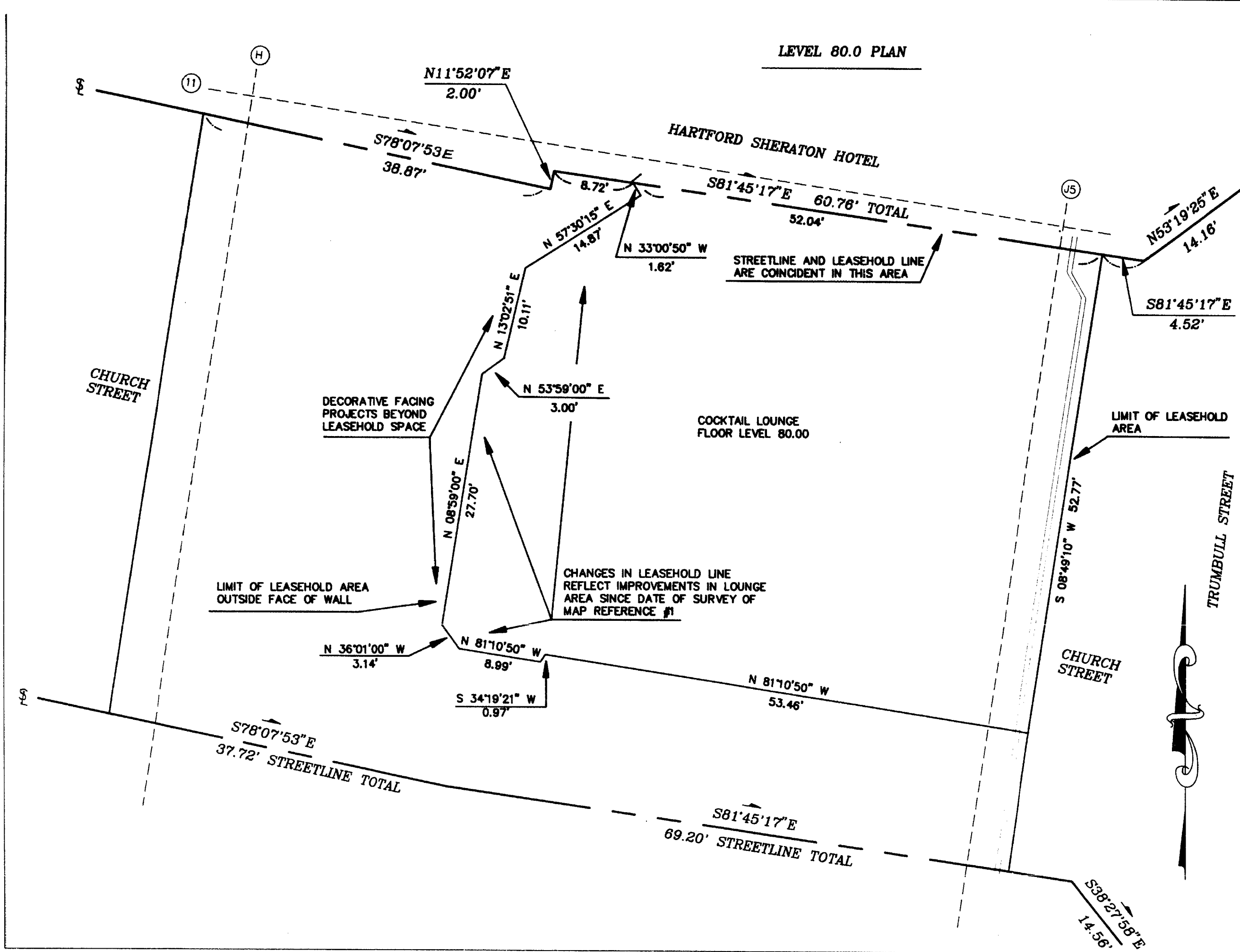


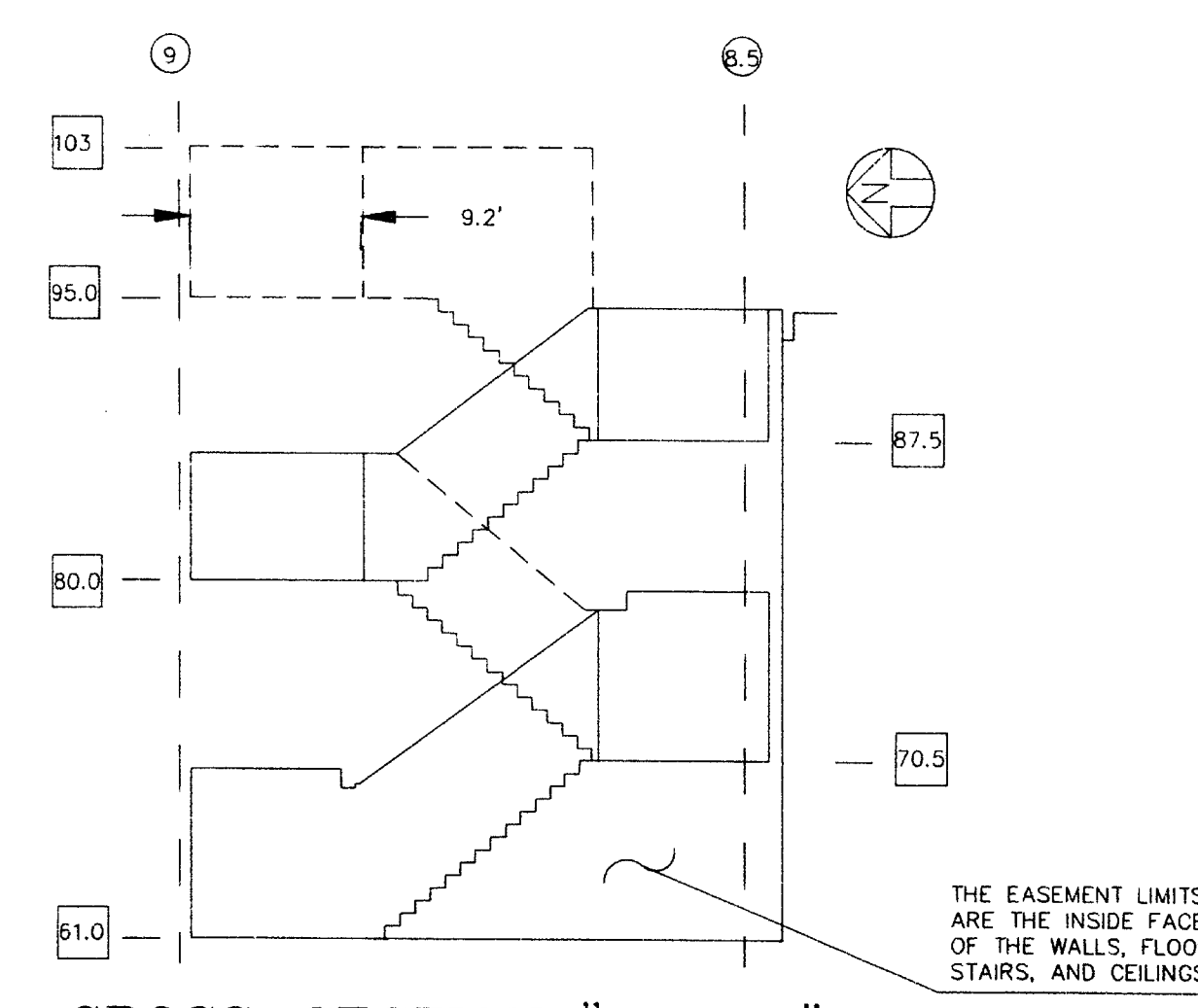
SERVICE ELEVATOR #6



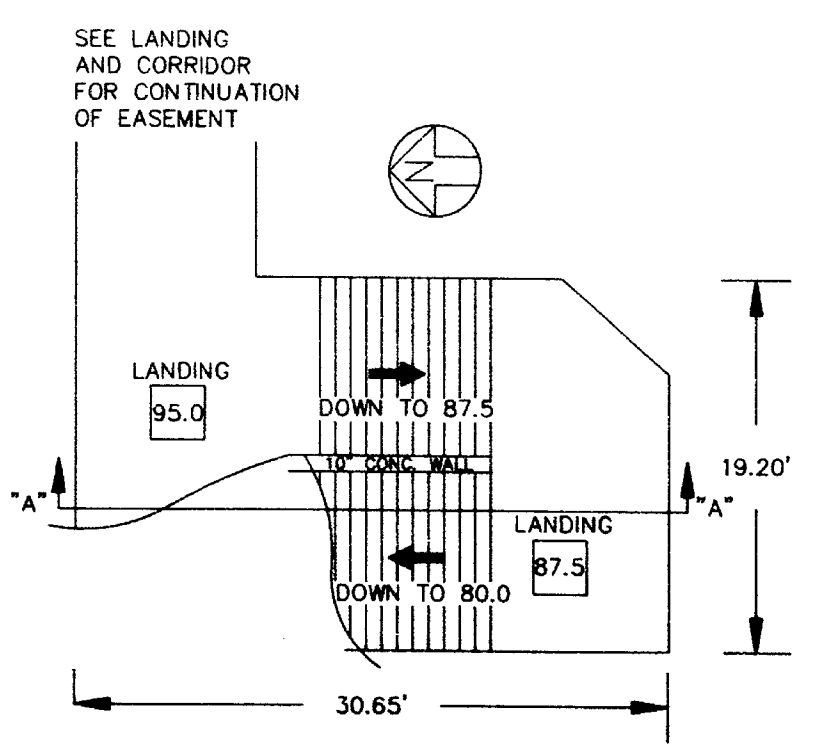
PLAN VIEWS OF STAIRWAY # 11



NORTH ARROWS ON ELEVATOR AND STAIRWAY DETAILS ARE APPROXIMATE.



CROSS-SECTION "A - A" STAIRWAY #11



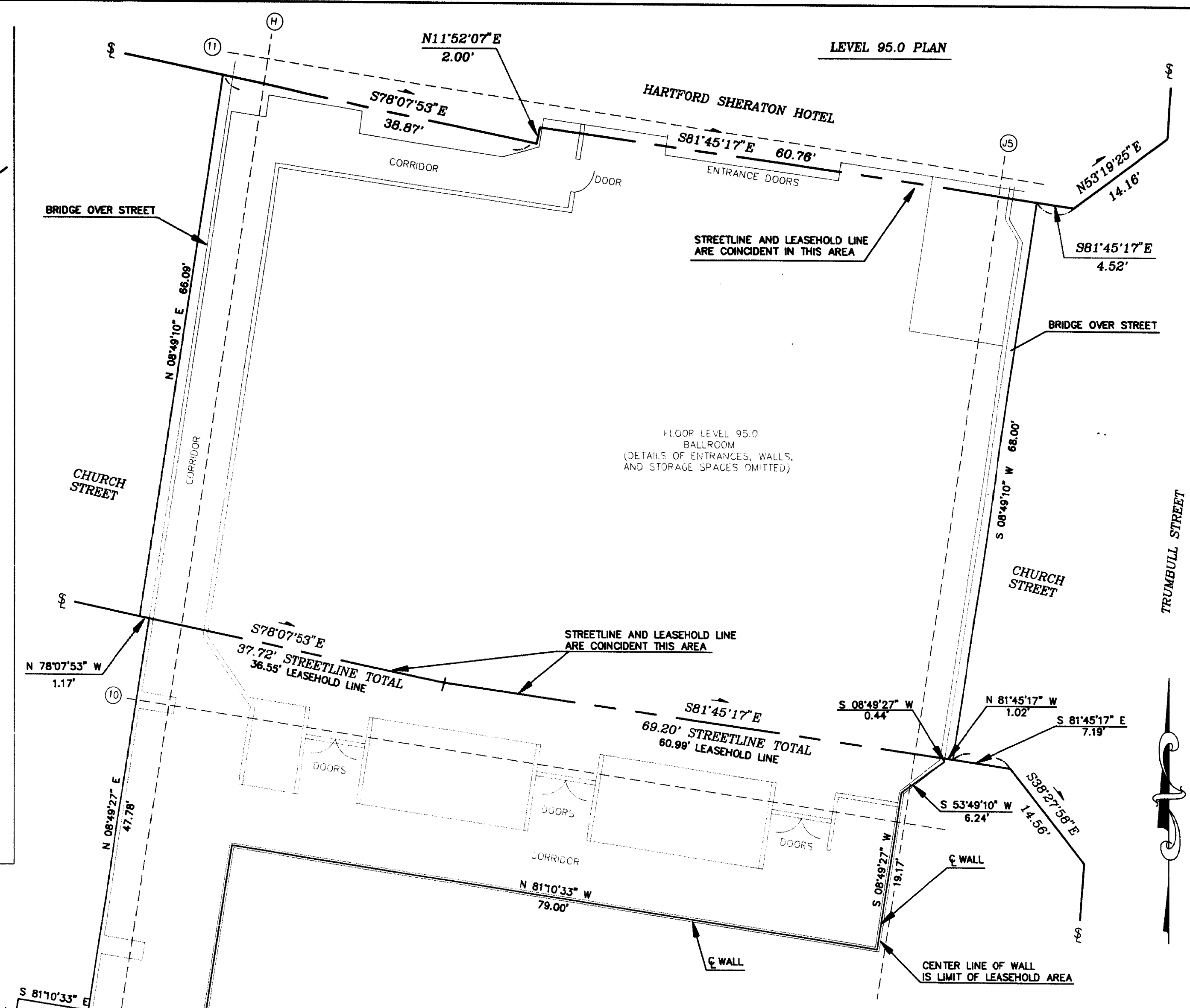
The portions of Church St and Trumbull St shown on this plan are established public streets of the City of Hartford.
12/28/89
Date City Engineer

LEGEND

- ① INDICATES COLUMN LINE DESIGNATION ON CONSTRUCTION PLANS FOR THE CIVIC CENTER OR THE SHERATON HOTEL
- 87.5 FLOOR OR LANDING LEVEL IN STAIRWAY

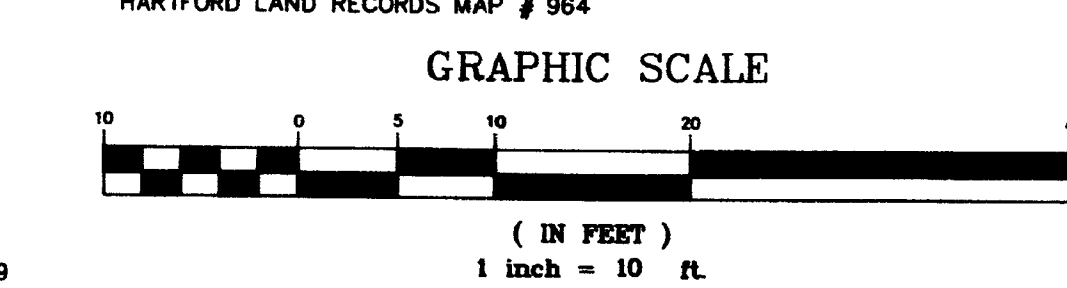
I hereby certify to CHICAGO TITLE INSURANCE COMPANY, SHERATON HARTFORD CORPORATION, SHERATON OPERATING CORPORATION and to HARTFORD CENTER HOTEL PARTNERSHIP that this survey was actually made at the site and that it and the bounds and measurements shown hereon are correct in accordance with note 1 hereon and are within the standards of Class A-2 of C.A.S.I., Inc., and that, unless otherwise shown and noted hereon, lease lines and lines of actual possession are the same, buildings are located as shown and do not encroach over or upon street or building lines, and there are no encumbrances or encroachments affecting this property apparent from a careful inspection of the same.

STRAUSS ENGINEERING ASSOCIATES, INC.
By Mervyn F. Strauss, P.E., President



- NOTES:
- 1) THE LOCATION OF PHYSICAL FEATURES SHOWN ON THIS PLAN PICTORIALLY WITHOUT DIMENSIONS WERE VERIFIED BY BY OBSERVATIONS AND SELECTED MEASUREMENTS AT THE SITE. THE LOCATION OF THESE PHYSICAL FEATURES WERE NOTED DURING DECEMBER 1989 AND ARE SUBJECT TO NORMAL CONSTRUCTION TOLERANCES AS TO PLACEMENT.
 - 2) ELEVATIONS REFER TO METROPOLITAN DISTRICT COMMISSION DATUM.
 - 3) DETAILS OF INTERIOR WALLS, CLOSETS, AND OTHER FIXTURES WITHIN LEASEHOLD AREAS HAVE BEEN OMITTED.
 - 4) DETAILS OF HANDRAILS IN STAIRWAYS HAVE BEEN OMITTED.

- MAP REFERENCES:
- 1) "LEASEHOLD AND EASEMENT PLAN FOR HARTFORD CENTER HOTEL PARTNERSHIP, CHURCH STREET, HARTFORD, CONNECTICUT, DATE: 3-21-75, DRAWN BY: A.T., JOB NO. 7423, SCALE: AS SHOWN, CHECKED BY: M.S. SHEET NO. 1." MORTON S. FINE & ASSOCIATES, INC., ON FILE H.L.R. MAP # 1017.
 - 2) "DISPOSITION TRACT 'G' HARTFORD CIVIC CENTER, TRUMBULL STREET PROJECT, CITY OF HARTFORD, CONNECTICUT, DEPARTMENT OF PUBLIC WORKS, BUREAU OF ENGINEERING SERVICES, AUGUST, 1974." ON FILE HARTFORD ENGINEERING DEPT. MAP # 225/98.
 - 3) "DISPOSITION TRACT 'G' TRUMBULL STREET PROJECT, CITY OF HARTFORD, CONNECTICUT, DEPARTMENT OF ENGINEERING, JUNE 1988, THIS PLAN SUPERCEDED BY 225/98 ...". ON FILE HARTFORD ENGINEERING DEPT. MAP # 225/9.
 - 4) "CHURCH STREET, PROPOSED STREET & CURB LINES, ANN. STREET TO TRUMBULL STREET, CITY OF HARTFORD, CONNECTICUT, DEPARTMENT OF ENGINEERING, JANUARY 1971." ON FILE HARTFORD ENGINEERING DEPT. MAP # 4/20.
 - 5) ASSORTED CONSTRUCTION PLANS ON FILE IN THE SHERATON HOTEL ENGINEERING DEPARTMENT, HARTFORD, CONNECTICUT.
 - 6) "TOPOGRAPHIC PLOT PLAN, SHERATON-HARTFORD HOTEL, TRUMBULL & CHURCH STS., HARTFORD, CONN., HALLUSEY ENGINEERING ASSOCIATES, HARTFORD, CONNECTICUT, DATE: 12-28-71." LAST REVISED 10-02-72, SCALE 1"=20'. PAUL A. HALLUSEY, L.S. #7761 ON FILE HARTFORD LAND RECORDS MAP # 864.



	LEASEHOLD AND EASEMENT PLAN FOR HARTFORD CENTER HOTEL PARTNERSHIP CHURCH STREET HARTFORD, CONNECTICUT		date: 12/14/89 scale: 1"=10' drawn by: J.E.K. checked by: M.F.S. sheet 1 of 1 job no.: 89040
	STRAUSS ENGINEERING ASSOCIATES, INC. engineers, landscape architects, surveyors avon park north avon, connecticut		
	REV. 12/18/89		
	1988		
	0 1 2 3 4 feet		