

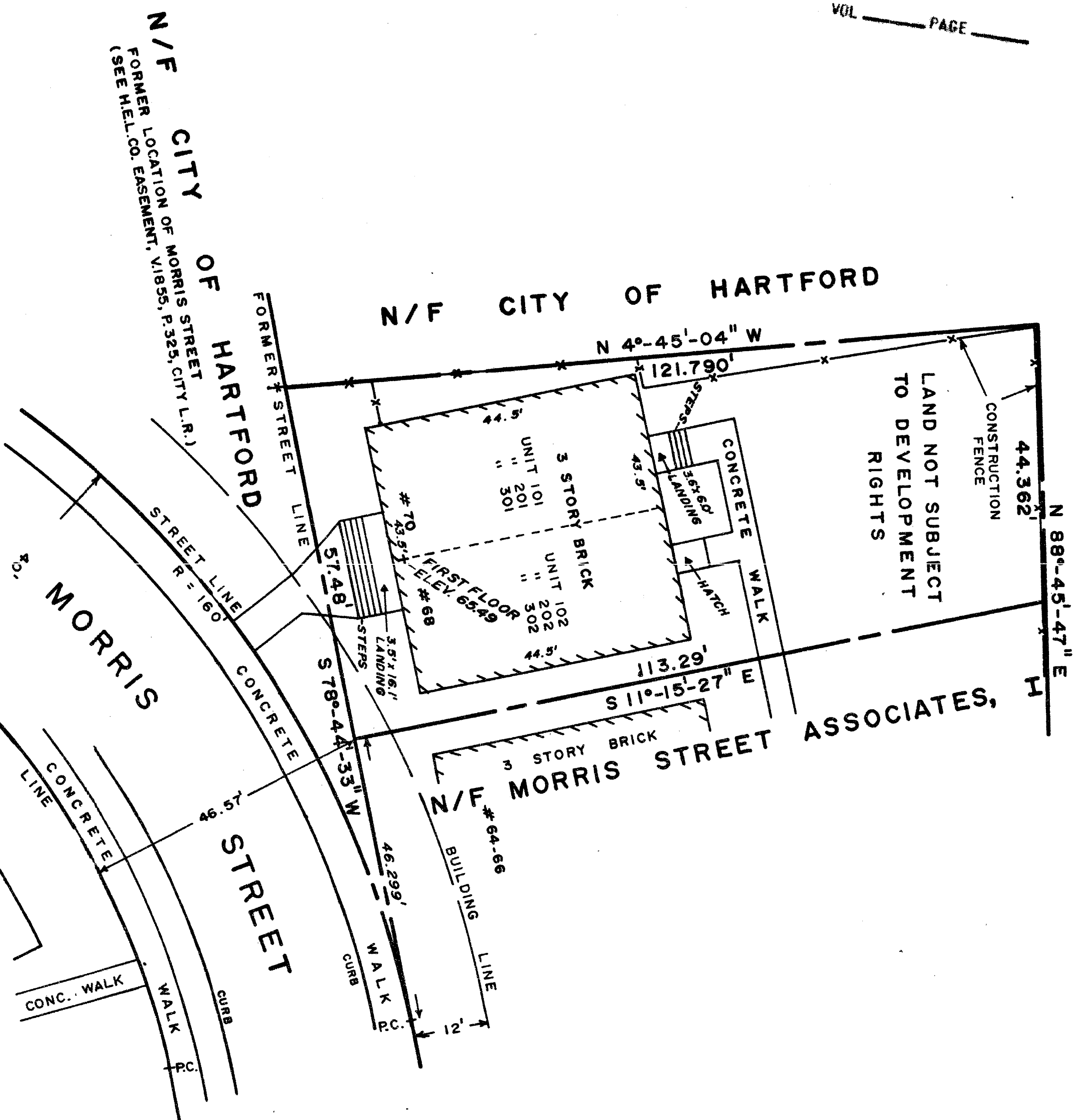
1824

TRUE
NORTH

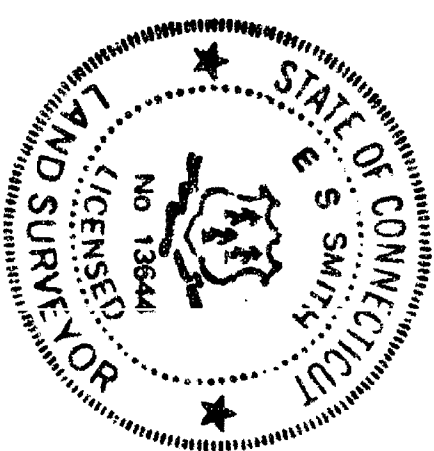
- NOTES:
- (1) REFERENCE FOR COURSES AND FLOOR ELEVATIONS IS MADE TO THE NATIONAL GRID SYSTEM, COMMISSION HORIZONTAL AND VERTICAL CONTROL SYSTEMS.
 - (2) REFERENCE IS MADE TO PREVIOUS MAPS OF THIS AREA BY THIS OFFICE AND BY THE CITY OF HARTFORD.
 - (3) BUILDING MEASUREMENTS SHOWN HEREON REFER TO THE FOUNDATIONS.
 - (4) FORMER STREET LINE OF MORRIS STREET WAS ALTERED BY URBAN RENEWAL PLAN FOR URBAN RENEWAL PROJECT (CONN.) NO. R-112, REF. V.1962, P.158, CITY LAND RECORDS.

NOTE: PARCEL AREA = 5952 SQ. FT.

N/F CITY OF HARTFORD



TO P & J REALTY AND CONNECTICUT ATTORNEYS TITLE INSURANCE COMPANY
I HEREBY DECLARE THAT THIS MAP IS SUBSTANTIALLY CORRECT
THIS MAP AND SURVEY WERE PREPARED IN ACCORDANCE WITH
THE STANDARDS OF A CLASS A LAND SURVEYOR AS SET FORTH IN THE
CONSTITUTION AND STATUTES OF THE STATE OF CONNECTICUT
AND THE ASSOCIATION OF LAND SURVEYORS, INC. ON SEPTEMBER 13, 1984,
AND THAT THE SAME HAVE BEEN REVIEWED AND APPROVED BY THE
BOARD OF LAND SURVEYORS, INC. ON SEPTEMBER 13, 1984,
SHOWING ALL INFORMATION REQUIRED OF SURVEYS UNDER SEC. 47-228
OF THE COMMON INTEREST OWNERSHIP ACT.



N/F
HISTORIC HARTFORD
ASSOCIATES
(S PARKING SPACES ARE RESERVED FOR THE
USE OF HISTORIC HARTFORD ASSOCIATES)
(SEE H.E.L.O. EASEMENT, V.1835, P.353, CITY L.R.)

OCT. 19, 1988
E. J. Smith

THE JOHN HANCOCK - A CONDOMINIUM

DECLARANT: P & J REALTY

68-70 MORRIS STREET
HARTFORD, CONNECTICUT

SCALE: 1 INCH = 20 FEET

SHEET 1 OF 1

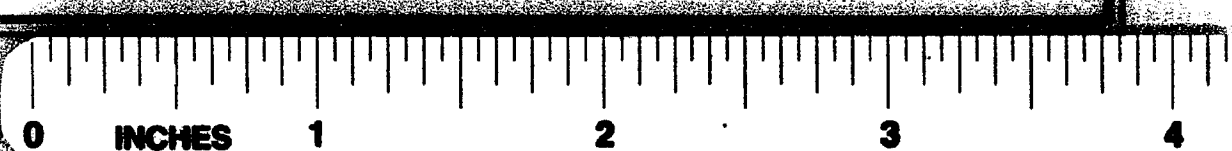
OCT, 1988

MAP PREPARED BY

PETERSEN & HOFFMAN - LAND SURVEYORS
1000 FARMINGTON AVENUE, WEST HARTFORD, CONN. 06107

The portion of Morris St.
shown on this plan is an
established street of
the City of Hartford
4/21/89 *Sheldon Turner*
Date City Engineer

MA 511-46 F.S. 42-114



1824