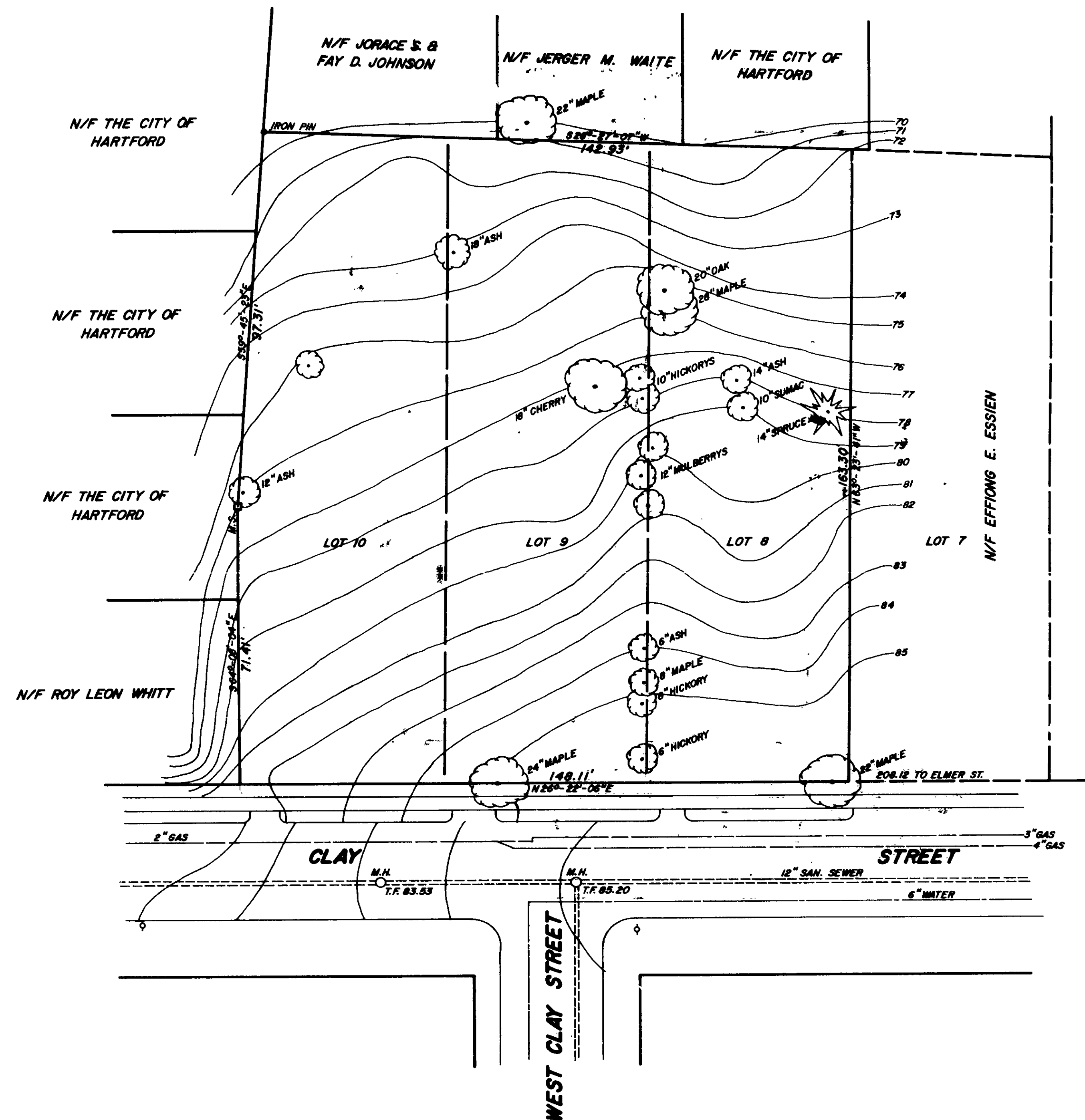


BEING KNOWN AS LOTS NO'S. 8, 9 & 10 ON A MAP ENTITLED "PLAN OF
NEW STREET THROUGH PROPERTY OF WM. CLAY, HARTFORD, CONN.
SCALE 50 FEET = 1 INCH SURVEYED APRIL 1898 FRANK T. MARSH, SUR-
VEYOR", ON FILE IN THE TOWN CLERK'S OFFICE IN THE TOWN OF HARTFORD.



TOTAL LAND AREA = 24,407.3 Sq. Ft.

I HEREBY DECLARE THAT THIS MAP IS SUBSTANTIALLY CORRECT. THIS
MAP AND SURVEY WERE PREPARED IN ACCORDANCE WITH THE STANDARDS
OF A CLASS A-2 SURVEY AS DEFINED IN THE "RECOMMENDED STANDARDS
FOR SURVEYS AND MAPS IN THE STATE OF CONNECTICUT" AS PREPARED
AND ADOPTED BY THE CONNECTICUT ASSOCIATION OF LAND SURVEYORS,
INC., ON SEPTEMBER 13, 1984.

Gerhie Dubiel
GERHIE DUBIEL
L.S. 9655
CONN. LICENSED L.S. NO. 9675

The portion of Clay St. shown on this plan
is an established public street of the
City of Hartford.
West Clay is private
11/4/87
Date
Anthony P. P. P.
City Engineer

	SURVEY FOR	
	NELSON - CLARK ASSOCIATES	
6-8, 10-12 & 14-16 CLAY STREET		
HARTFORD, CONNECTICUT		
SCALE: 1" = 20'		
DUBIEL ASSOCIATES - EAST HARTFORD, CONNECTICUT PROJECT NO. 2509 SHEET NO. 1 OF 1		
APRIL 8, 1987		
No.	Date	Description
Revisions		



1662