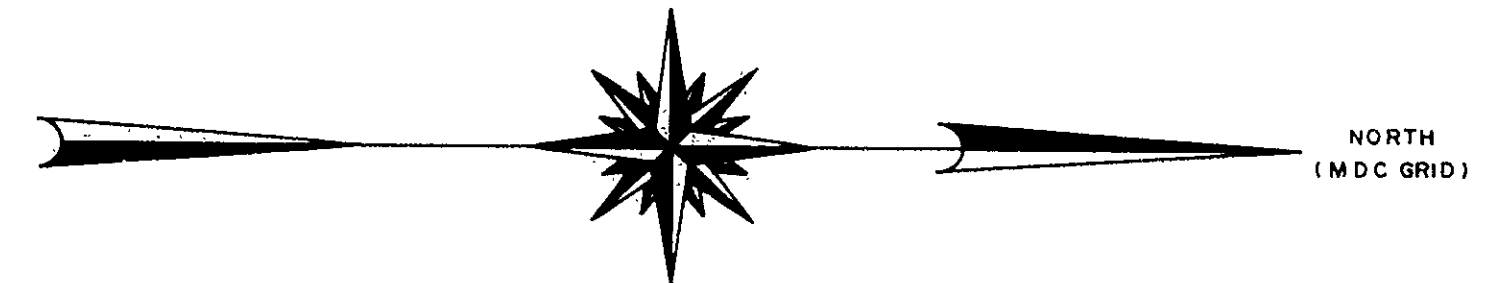
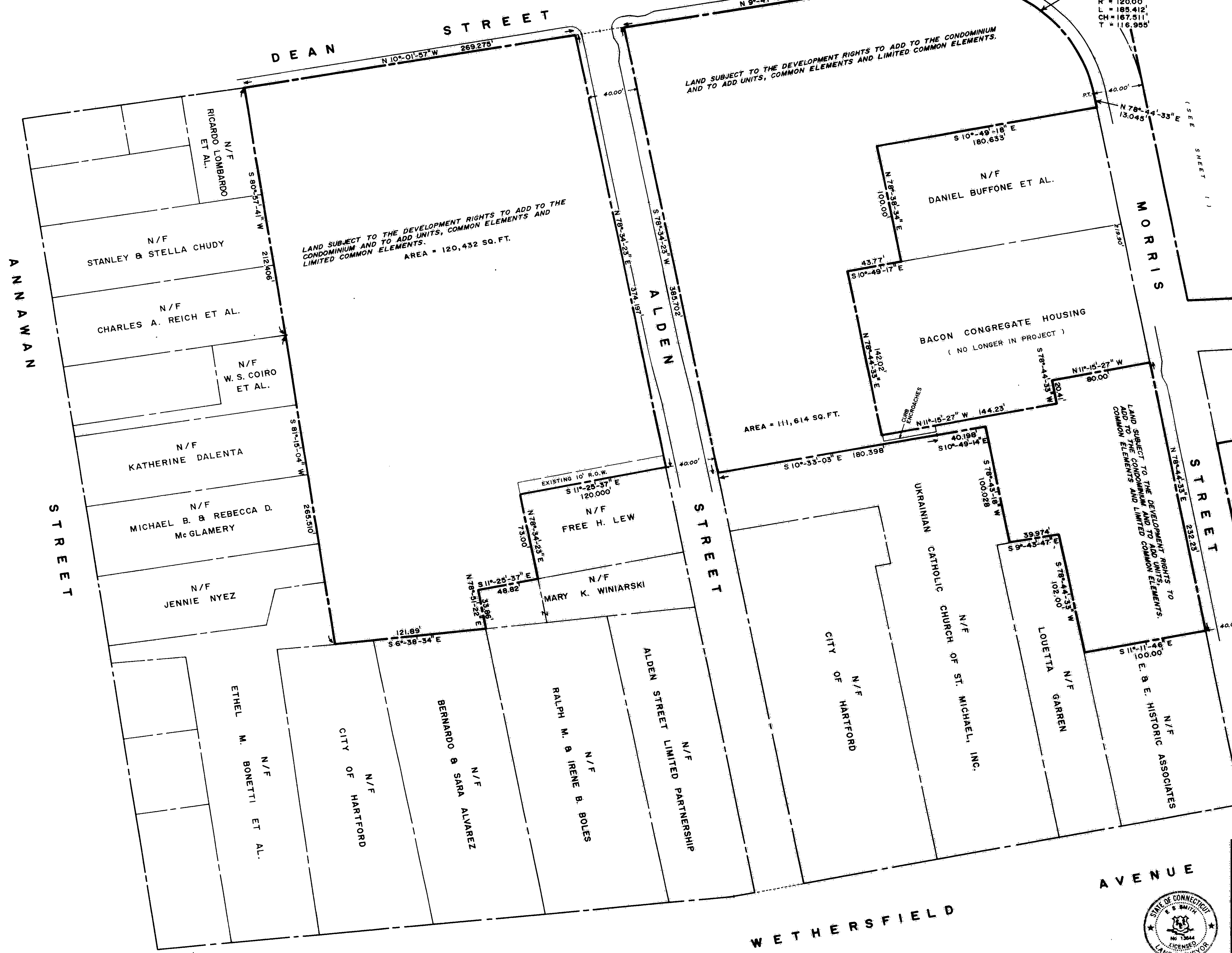


1655-1

NOTES: 1) STREET LINE AND PROJECT BOUNDARY DATA ARE DERIVED FROM AN OUTLINE MAP PREPARED BY THE CITY OF HARTFORD AND DATED DECEMBER 1977 WITH REVISIONS JAN. 26, 1978.  
2) REFERENCE FOR AZIMUTH USED IS METROPOLITAN DISTRICT COMMISSION COORDINATE SYSTEM.



1655-1  
11-16-1987  
L.A.



LAND SUBJECT TO THE DEVELOPMENT RIGHTS TO ADD TO THE CONDOMINIUM AND TO ADD UNITS, COMMON ELEMENTS AND LIMITED COMMON ELEMENTS.

LAND SUBJECT TO THE DEVELOPMENT RIGHTS TO ADD TO THE CONDOMINIUM AND TO ADD UNITS, COMMON ELEMENTS AND LIMITED COMMON ELEMENTS. AREA = 120,432 SQ. FT.

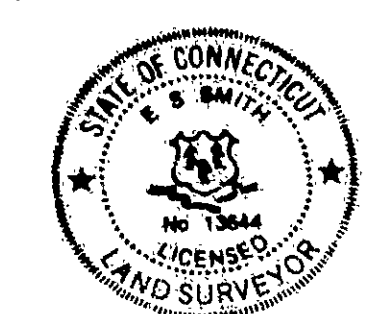
AREA = 111,614 SQ. FT.

NOTE: TOTAL CONDOMINIUM AREA (SHEETS 1 & 2) = 538,466 SQ. FT.

I HEREBY CERTIFY THAT THIS MAP AND SURVEY WERE PREPARED IN ACCORDANCE WITH THE STANDARDS OF A CLASS A-S SURVEY AS DEFINED IN THE CODE OF PRACTICE FOR STANDARDS OF ACCURACY OF SURVEYS AND MAPS, ADOPTED DECEMBER 10, 1975 AS AMENDED BY THE CONNECTICUT ASSOCIATION OF LAND SURVEYORS, INC. AND THAT THIS SURVEY CONSISTS OF THE NUMBER OF SHEETS NOTED SHOWS ALL INFORMATION REQUIRED OF SURVEYS UNDER SEC. 47-228 OF THE CONNECTICUT GENERAL STATUTES.

MARCH 24, 1987 E. J. Smith

The portions of Dean St., Morris St., Congress St., Wethersfield Ave., Alden St. and Annawan St. shown on this plan are established public streets of the City of Hartford.  
10/1/87  
Date City Engineer



CONGRESS STREET CONDOMINIUM	
DEVELOPER: CONGRESS STREET CONDOMINIUMS, LTD.	
HARTFORD, CONNECTICUT	
SHEET 2 OF 3: PORTION OF PROJECT SOUTH OF MORRIS STREET	
SCALE: 1 INCH = 40 FEET	MARCH, 1987
MAP PREPARED BY PETERSEN & HOFFMAN - LAND SURVEYORS 1000 FARMINGTON AVENUE, WEST HARTFORD, CONN. 06107	

MAP UPDATES:
--------------

1655

152

