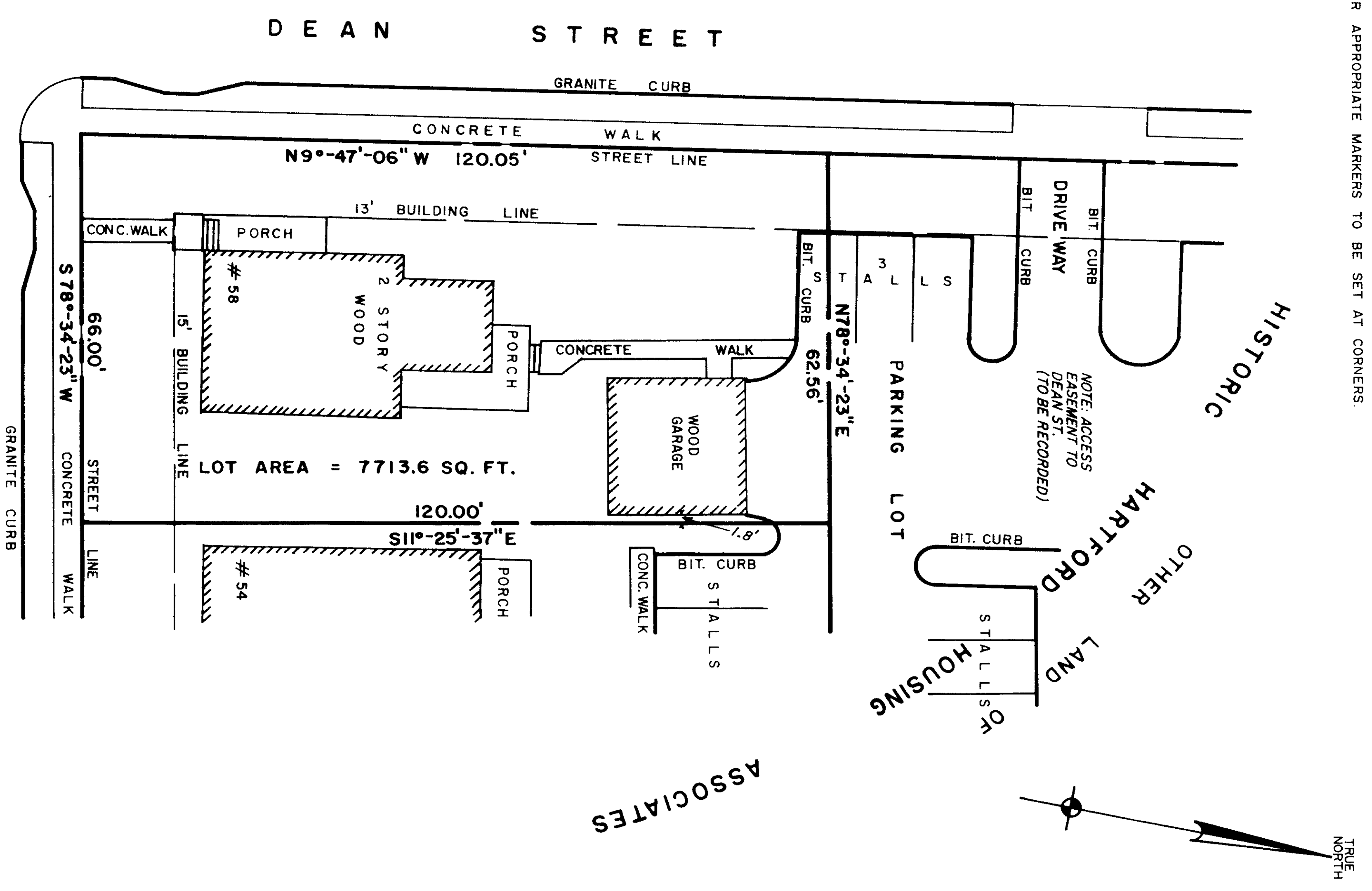


1618-1

FASI FILE CORP. IRVINE CA EFM 34
1618

- NOTES
- 1) REFERENCE FOR AZIMUTH USED IS METROPOLITAN DISTRICT COMMISSION COORDINATE SYSTEM.
 - 2) REFERENCE IS MADE TO OUR 40 SCALE BLOCK MAPS (2 SHEETS) SHOWING THE ENTIRE CONGRESS STREET COMMUNITY AREA
 - 3) IRON PINS OR OTHER APPROPRIATE MARKERS TO BE SET AT CORNERS.

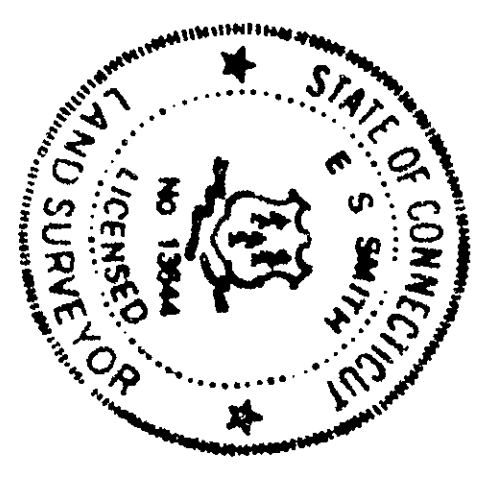


0 1 2 3 4 INCHES

TO CONGRESS STREET CONDOMINIUMS, LTD.; ADVEST BANK, AND LAWYERS TITLE INSURANCE CORPORATION: I HEREBY CERTIFY THAT THIS SURVEY WAS ACTUALLY MADE UPON THE GROUND AND THAT IT AND THE BOUNDS AND MEASUREMENTS SHOWN HEREON ARE CORRECT WITHIN THE STANDARDS OF CLASS A-2 OF THE SURVEYING ACT, AND THAT I AM A LICENSED LAND SURVEYOR IN THE STATE OF CONNECTICUT. UNLESS OTHERWISE SHOWN, TITLE LINES AND LINES OF ACTUAL POSSESSION ARE THE SAME. BUILDINGS ARE LOCATED AS SHOWN AND DO NOT ENCROACH OVER OR UPON STREET, TITLE OR BUILDING LINES. THERE ARE NO VIOLATIONS OF ZONING REGULATIONS WITH REFERENCE TO THE SHOWN ON THIS PLAN ARE ESTABLISHED BY THE CITY OF HARTFORD, CONNECTICUT. THE PORTIONS OF ALDEN ST AND DEAN ST SHOWN ON THIS PLAN ARE ESTABLISHED BY THE CITY OF HARTFORD, CONNECTICUT. THE PORTIONS OF ALDEN ST AND DEAN ST SHOWN ON THIS PLAN ARE ESTABLISHED BY THE CITY OF HARTFORD, CONNECTICUT. THE PORTIONS OF ALDEN ST AND DEAN ST SHOWN ON THIS PLAN ARE ESTABLISHED BY THE CITY OF HARTFORD, CONNECTICUT.

FEB 9, 1987 E. J. Smith Date City Engineer

MAP PREPARED BY: PETERSEN & HOFFMAN — LAND SURVEYORS 1000 FARMINGTON AVE., WEST HARTFORD, CT 06107 CONGRESS STREET COMMUNITY 58 ALDEN STREET HARTFORD, CONNECTICUT SCALE: 1 IN. = 20 FT. FEB., 1987



92 1018