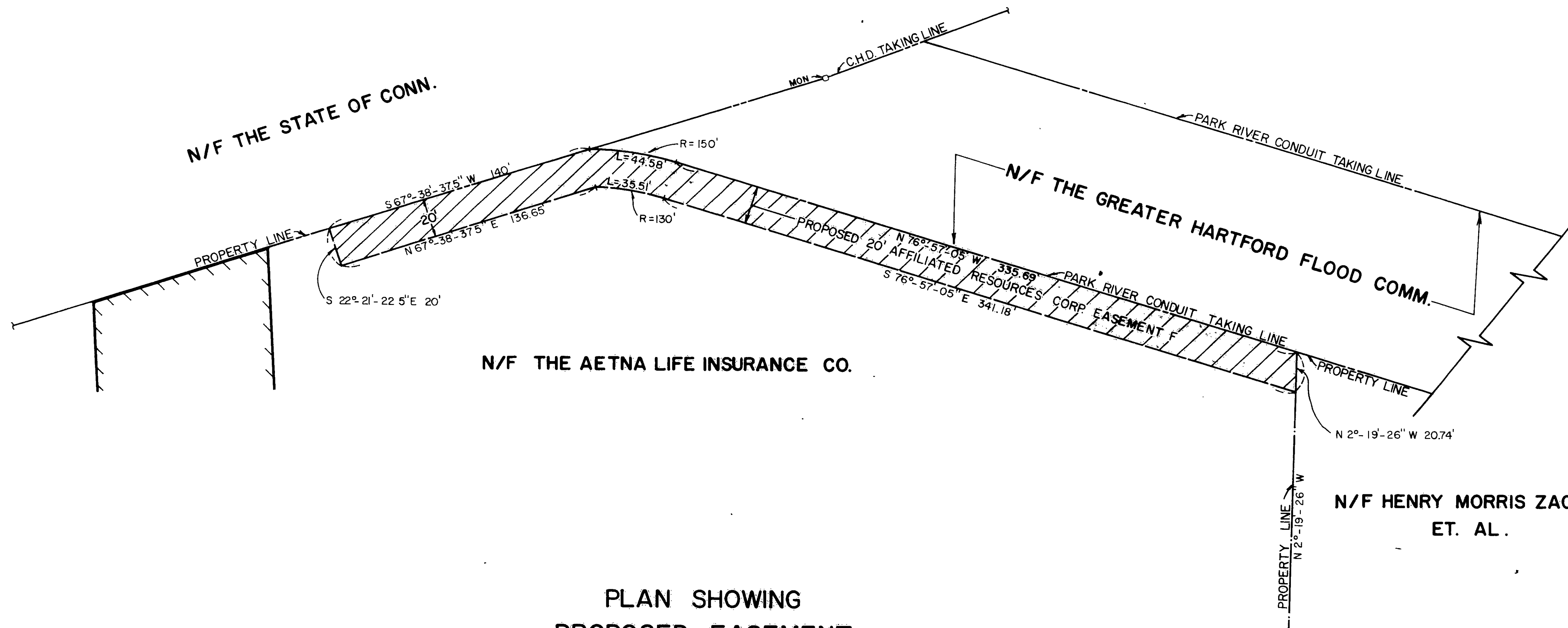


RECEIVED BY
FEB 18 2 16 PM '87
TOWN CLERK
HARTFORD
VOL. _____ PAGE _____



PLAN SHOWING
PROPOSED EASEMENT
FROM
AETNA LIFE INSURANCE CO.
TO
AFFILIATED RESOURCES CORP.
REAR OF # 410 CAPITOL AVE. - HARTFORD, CONN.

DATE: OCT. 1986 SCALE: 1" = 40'
* REV. 12-4-86 SARGIS ENGINEERING

*The property shown on this plan is north of Capitol Ave.
an established public street of the City of Hartford.*
Date 2/24/87 City Engineer [Signature]

I HEREBY CERTIFY TO CANADIAN IMPERIAL BANK OF COMMERCE, NEW YORK AGENCY, AFFILIATED RESOURCES CORPORATION, CHICAGO TITLE INSURANCE COMPANY AND CONNECTICUT DEVELOPMENT AUTHORITY THAT THIS MAP AND SURVEY WERE PREPARED IN ACCORDANCE WITH THE STANDARDS OF A CLASS A2 SURVEY AS DEFINED IN THE CODE OF PRACTICE FOR STANDARDS OF ACCURACY OF SURVEYS AND MAPS, ADOPTED DECEMBER 10, 1975 AS AMENDED BY THE CONNECTICUT ASSOCIATION OF LAND SURVEYORS, INC.

ATTEST [Signature]
JOHN L. THOMSON

* REVISION: MAP CERTIFICATION

