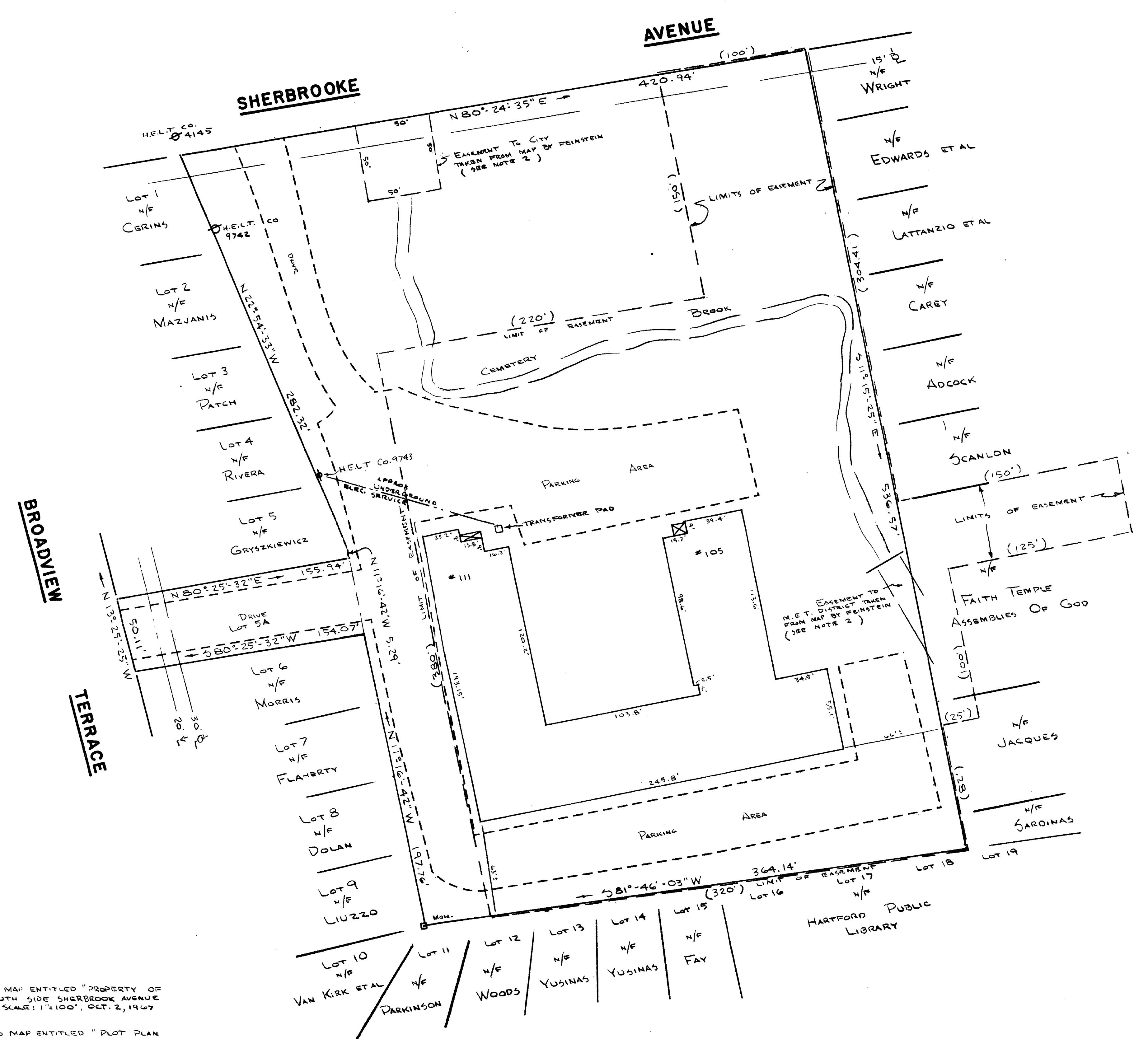


RECEIVED BY
 OCT 24 10 PM '85
 TO THE CITY CLERK
 HARTFORD
 WILL PAGE



- NOTE:
- REFERENCE IS MADE TO MAP ENTITLED "PROPERTY OF ABRAHAM D. GOSMAN, SOUTH SIDE SHERBROOKE AVENUE, HARTFORD, CONNECTICUT, SCALE: 1"=100', OCT. 2, 1967, HANS S. JENSEN L.S."
 - REFERENCE IS MADE TO MAP ENTITLED "PLOT PLAN FOR CHESTER ZOCCO, HARTFORD, CONNECTICUT, SCALE: 1"=100', 11/30/70, REVISED 1/4/71, MYRON FEINSTEIN ASSOC. L.S. 5542."
 - EASEMENT IN FAVOR OF THE PARK RIVER FLOOD CONTROL COMMISSION ON BEHALF OF THE CITY OF HARTFORD, VOL. 988 PG. 217 1/23/57
 - M.D.C. WATER CAVEAT TO LAY A WATER MAIN ON SHERBROOKE AVE. VOL. 1036 PG. 405 12/15/59
 - DIED RESTRICTIONS ON LOT 5A VOL. 649 PG. 17 12/8/27
 - PROPERTY IS LOCATED IN ZONE-C AS DEPICTED ON "FLOOD INSURANCE RATE MAP, CITY OF HARTFORD, CT, HARTFORD COUNTY COMMUNITY PANEL NO. 095080 0005 A, MAP REVISED: SEPT. 29, 1978."

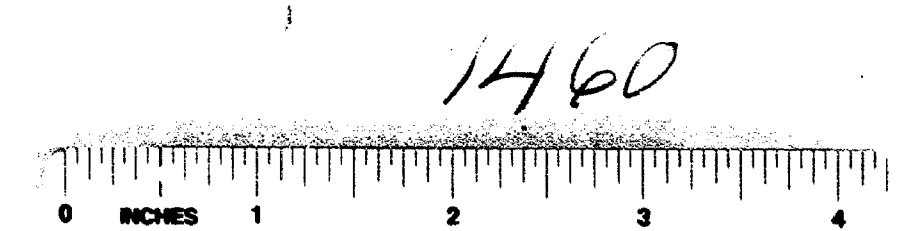
I HEREBY CERTIFY
 THAT THIS SURVEY WAS ACTUALLY MADE UPON THE GROUND ON SEPT. 19, 1985 AND THAT IT AND THE SOUNDS AND MEASUREMENTS SHOWN HEREON ARE CORRECT WITHIN THE STANDARDS OF CLASS A-2 SURVEY AS DEFINED IN THE CODE OF PRACTICE FOR STANDARDS OF ACCURACY OF SURVEYS AND MAPS, ADOPTED DECEMBER 10, 1975 AS AMENDED BY THE CONNECTICUT ASSOCIATION OF LAND SURVEYORS, INC.
 Stanley W. Spytowicki
 623 TALLENTVILLE ROAD
 VERNON, CONNECTICUT
 R.L.S. 7772



MAP SHOWING
 PROPERTY LOCATED AT
105-111 SHERBROOKE AVENUE
 HARTFORD, CONNECTICUT
 SEPTEMBER 19, 1985
 SCALE: 1"=40'

The portions of Sherbrooke Ave. and Broadview Terr. shown on this plan are established public streets of the City of Hartford.
 10/11/85
 Date
 City Engineer

3958



1460