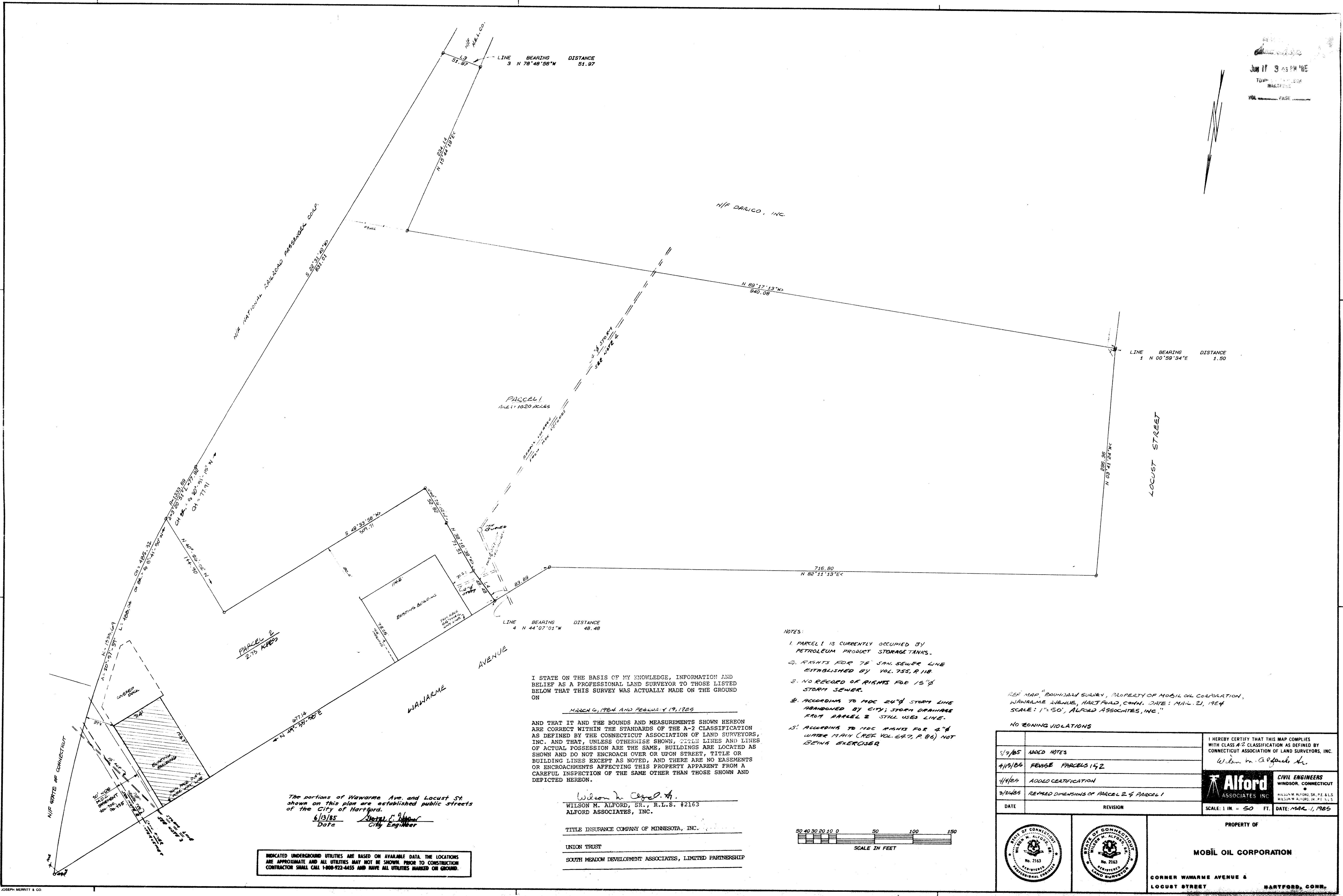


DATE: JUN 17 3 43 PM '85
TOWN: HARTFORD
PAGE: 1



I STATE ON THE BASIS OF MY KNOWLEDGE, INFORMATION AND BELIEF AS A PROFESSIONAL LAND SURVEYOR TO THOSE LISTED BELOW THAT THIS SURVEY WAS ACTUALLY MADE ON THE GROUND ON

MARCH 6, 1985 AND FEBRUARY 19, 1985

AND THAT IT AND THE BOUNDS AND MEASUREMENTS SHOWN HEREON ARE CORRECT WITHIN THE STANDARDS OF THE A-2 CLASSIFICATION AS DEFINED BY THE CONNECTICUT ASSOCIATION OF LAND SURVEYORS, INC. AND THAT, UNLESS OTHERWISE SHOWN, TITLE LINES AND LINES OF ACTUAL POSSESSION ARE THE SAME, BUILDINGS ARE LOCATED AS SHOWN AND DO NOT ENCR OACH OVER OR UPON STREET, TITLE OR BUILDING LINES EXCEPT AS NOTED, AND THERE ARE NO EASEMENTS OR ENCROACHMENTS AFFECTING THIS PROPERTY APPARENT FROM A CAREFUL INSPECTION OF THE SAME OTHER THAN THOSE SHOWN AND DEPICTED HEREON.

Wilson M. Alford, Sr.
WILSON M. ALFORD, SR., R.L.S. #2163
ALFORD ASSOCIATES, INC.

TITLE INSURANCE COMPANY OF MINNESOTA, INC.

UNION TRUST
SOUTH MEADOW DEVELOPMENT ASSOCIATES, LIMITED PARTNERSHIP

- NOTES:
1. PARCEL 1 IS CURRENTLY OCCUPIED BY PETROLEUM PRODUCT STORAGE TANKS.
 2. RIGHTS FOR 78" SAN. SEWER LINE ESTABLISHED BY VOL. 753, P. 118.
 3. NO RECORD OF RIGHTS FOR 15" STORM SEWER.
 4. ACCORDING TO MOC 24" STORM LINE ABANDONED BY CITY; STORM DRAINAGE FROM PARCEL 2 STILL USES LINE.
 5. ACCORDING TO MOC RIGHTS FOR 2" WATER MAIN (SEE VOL. 647, P. 86) NOT BEING EXERCISED.

REF. MAP "BOUNDARY SURVEY, PROPERTY OF MOBIL OIL CORPORATION, WAWARAME AVENUE, HARTFORD, CONN. DATE: MARCH 21, 1984 SCALE: 1"=50', ALFORD ASSOCIATES, INC."

NO EROSION VIOLATIONS

5/9/85 ADDED NOTES		I HEREBY CERTIFY THAT THIS MAP COMPLIES WITH CLASS A-2 CLASSIFICATION AS DEFINED BY CONNECTICUT ASSOCIATION OF LAND SURVEYORS, INC. Wilson M. Alford, Sr. CIVIL ENGINEERS WINDSOR, CONNECTICUT WILSON M. ALFORD, SR., P.E., R.L.S. WILSON M. ALFORD, JR., P.E., R.L.S.
4/13/85 REVISE PARCELS 1 & 2		
4/14/85 ADDED CERTIFICATION		
3/14/85 REVISED DIMENSIONS OF PARCEL 2 & PARCEL 1		
DATE	REVISION	SCALE: 1 IN. = 50 FT. DATE: MAR. 1, 1985
PROPERTY OF		MOBIL OIL CORPORATION CORNER WAWARAME AVENUE & LOCUST STREET HARTFORD, CONN.
ON 15-SEP-85		

INDICATED UNDERGROUND UTILITIES ARE BASED ON AVAILABLE DATA. THE LOCATIONS ARE APPROXIMATE AND ALL UTILITIES MAY NOT BE SHOWN PRIOR TO CONSTRUCTION. CONTRACTOR SHALL CALL 1-800-922-4455 AND HAVE ALL UTILITIES MARKED ON GROUND.