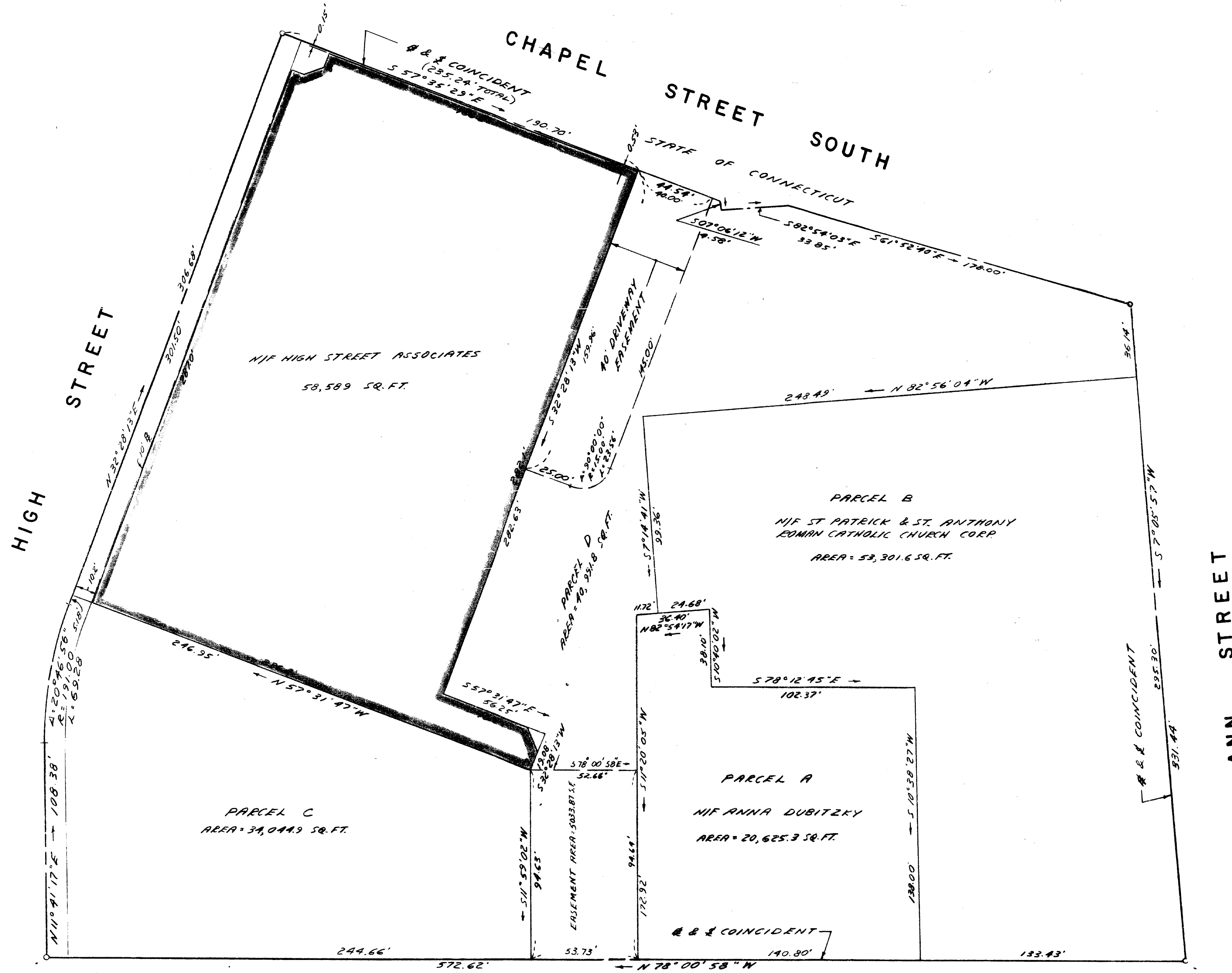


12187  
APR 22 3 44 PM '85  
F167200  
N153 200



- NOTES:
1. ZONE B-1
  2. TOTAL AREA 207,552.3 SQ. FT.  
4.76 ACRES
  3. BEARINGS BASED ON M.D.C. COORDINATES

CHURCH STREET

The portions of High St., Ann St. and Church St. shown on this plan are established public streets of the City of Hartford. Chapel St. South is maintained by the City of Hartford.

4/30/85  
Date  
City Engineer

CONDITIONS SHOWN ARE TRUE & ACCURATE AS OF NOV. 8, 1983

I HEREBY CERTIFY TO THE CITY OF HARTFORD THAT THIS SURVEY WAS ACTUALLY MADE UPON THE GROUND ON 2-10-83, AND THAT IT AND THE BOUNDS AND MEASUREMENTS SHOWN HEREON ARE CORRECT WITHIN THE STANDARDS OF CLASS "A" AS DEFINED IN THE CODE OF PRACTICE FOR STANDARDS OF ACCURACY ADOPTED BY THE CONN. ASSOCIATION OF LAND SURVEYORS AND THAT UNLESS OTHERWISE SHOWN, TITLE LINES AND LINES OF ACTUAL POSSESSION ARE THE SAME. BUILDINGS ARE LOCATED AS SHOWN AND DO NOT ENCRUMBER OVER OR UPON STREET, TITLE OR BUILDING LINES. THERE ARE NO VIOLATIONS OF ZONING REGULATIONS WITH REFERENCE TO THE LOCATION OF SAID BUILDINGS AND THERE ARE NO EASEMENTS OR ENCROACHMENTS AFFECTING THIS PROPERTY APPARENT FROM A CAREFUL INSPECTION OF THE SAME.

HALLISEY & HERBERT CIVIL ENGINEERS & LAND SURVEYORS 1850 SILAS DEANE HIGHWAY, ROCKY HILL, CONNECTICUT		DRAWN: JD CHECKED: KH DATE: 3 JUNE 83 SCALE: 1"=30' SHEET: OF
PROPERTY BOUNDED BY HIGH, CHURCH & ANN STREETS AND CHAPEL STREET SOUTH HARTFORD, CONNECTICUT		REVISIONS 2.200.01 - INTERIOR LINES ADJUSTED 3.200.01 - INTERIOR LINES ADJUSTED 4.200.01 - INTERIOR LINES ADJUSTED 5.200.01 - INTERIOR LINES ADJUSTED
JOB NO. 457		

