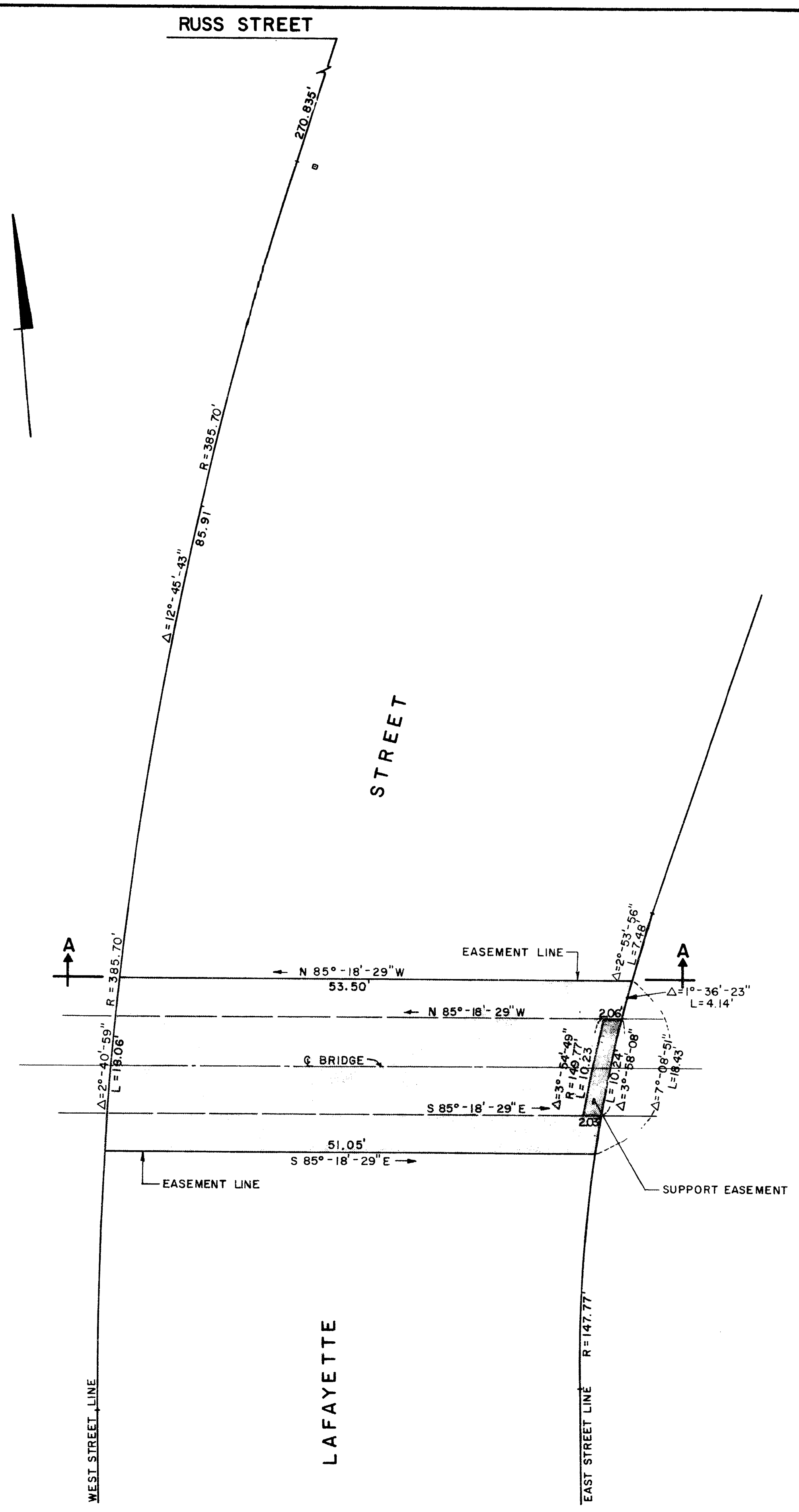
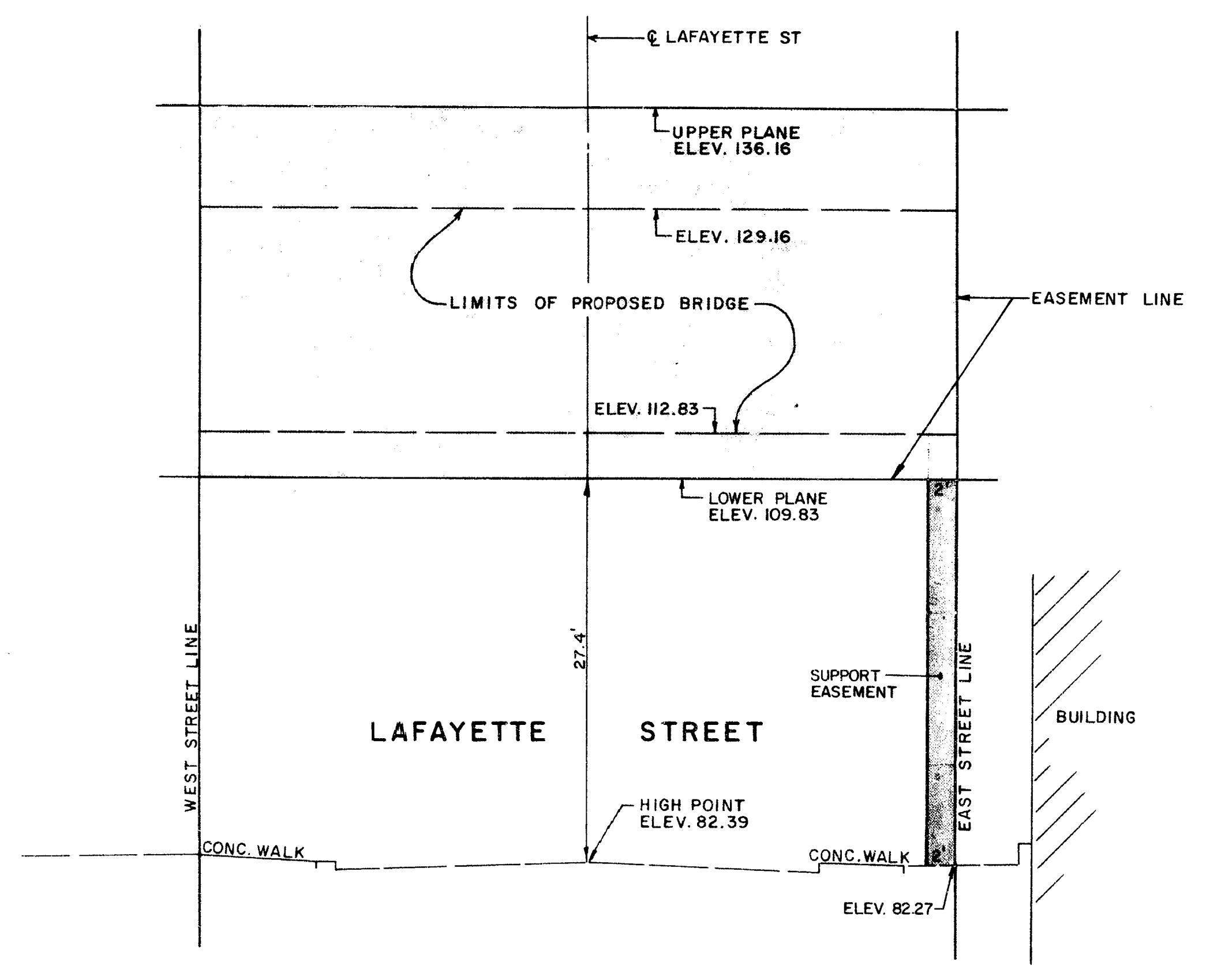


10000 NEWBULL 10-11-73



PLAN

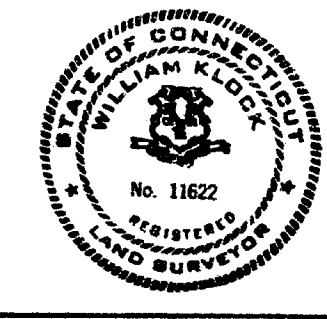


SECTION A-A

NOTES:
HORIZONTAL DATUM IS M.D.C.
VERTICAL DATUM IS NGVD 1929

The portion of Lafayette St shown on this plan is an established public street of the City of Hartford.
11/28/84 Date
George E. Murphy City Engineer

I HEREBY CERTIFY THAT THIS MAP AND SURVEY WERE PREPARED IN ACCORDANCE WITH THE STANDARDS OF A CLASS 22 SURVEY AS DEFINED IN THE CODE OF PRACTICE FOR STANDARDS OF ACCURACY OF SURVEYS AND MAPS, ADOPTED DECEMBER 10, 1975 AS AMENDED BY THE CONNECTICUT ASSOCIATION OF LAND SURVEYORS, INC.
William Blocky L.S.



REVISIONS
MARCH 20, 1984

FUSS & O'NEILL
consulting engineers
MANCHESTER, CONNECTICUT

AIR RIGHTS AND SUPPORT EASEMENTS
GRANTED BY:
THE CITY OF HARTFORD
TO
THE STATE OF CONNECTICUT
OVER LAFAYETTE STREET - HARTFORD, CONNECTICUT

PROJ. NO.	DATE	SCALE	FIELD BK.	DESIGNER	CHECKER	SHEET NO.
83-236 A	AUG. 1983	1/8"=1'-0"	324 / 51	W. K.	W. S. F.	1 of 1

1382



1382