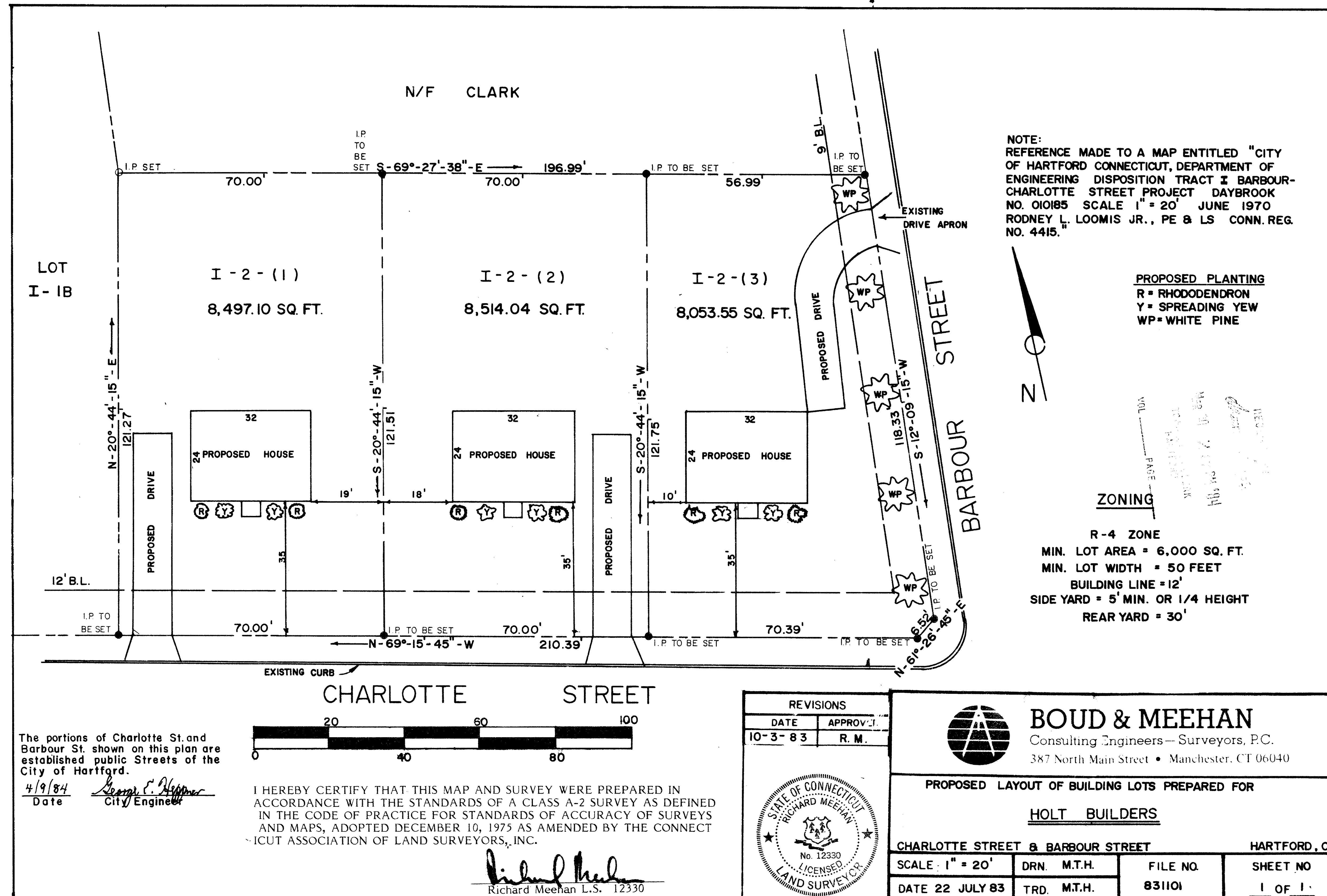


E&B FILE CORP. IRVING, CA EPH 34

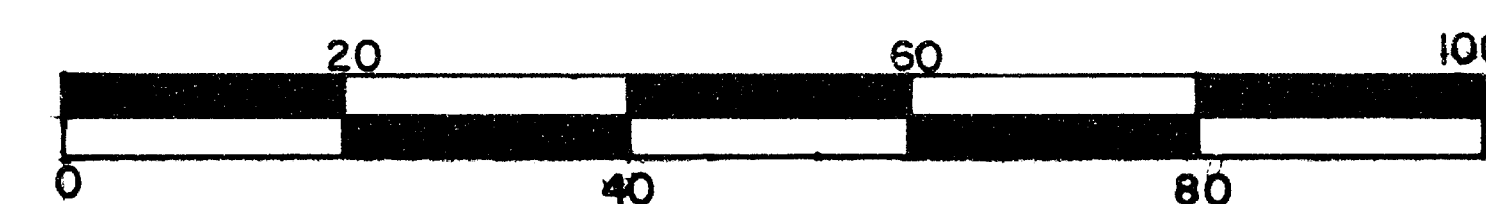
1350

1350-1



The portions of Charlotte St. and Barbour St. shown on this plan are established public Streets of the City of Hartford.

4/9/84
Date
City Engineer



I HEREBY CERTIFY THAT THIS MAP AND SURVEY WERE PREPARED IN ACCORDANCE WITH THE STANDARDS OF A CLASS A-2 SURVEY AS DEFINED IN THE CODE OF PRACTICE FOR STANDARDS OF ACCURACY OF SURVEYS AND MAPS, ADOPTED DECEMBER 10, 1975 AS AMENDED BY THE CONNECTICUT ASSOCIATION OF LAND SURVEYORS, INC.

Richard Meehan L.S. 12330

