

EASI FILE CORP IRVINE CA EPH 34

1320	

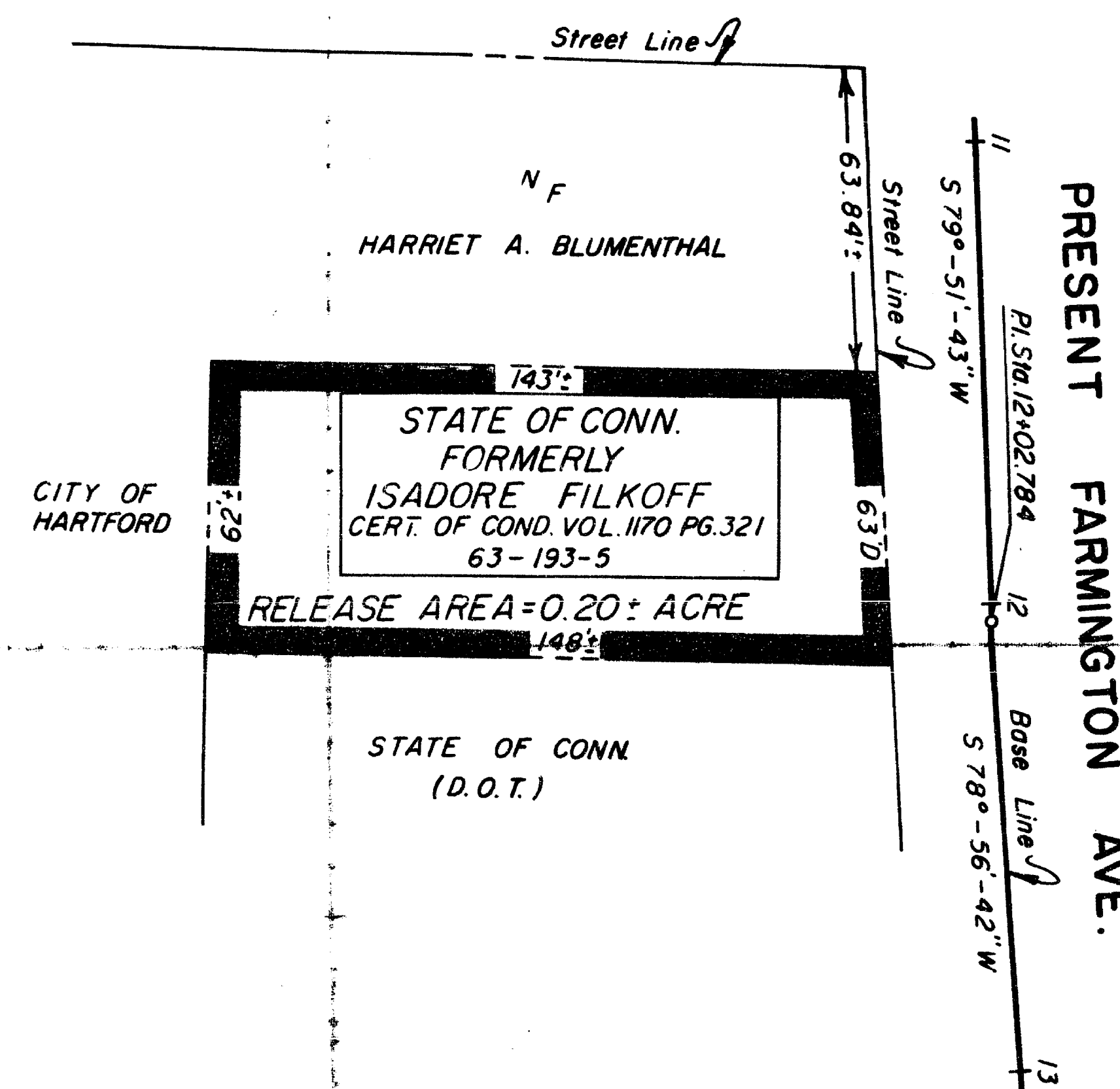
ENG 24 ED REV 4-79

RECEIVED BY
William A. Harty

OCT 6 3 04 PM '83
TOWN & CITY CLERK
HARTFORD

VOL _____ PAGE _____

PRESENT OWEN STREET



The portions of Owen St. and Farmington Ave. shown on this plan are established public streets of the City of Hartford.

10/20/83
Date George C. Harty
City of Hartford

DATE	REVISION	REQ. BY

TOWN NO. 63
PROJECT NO. 63-93
SERIAL NO. 5-A
SHEET 1 OF 1

THIS MAP CONFORMS TO CLASS D
OF CODE OF CONNECTICUT
TECHNICAL COUNCIL INC.

Drawn By GA Date 3-3-82
Checked By A.P.D. Date 3-3-82
Appr. By _____ Date _____

I HEREBY CERTIFY THAT THIS MAP
IS SUBSTANTIALLY CORRECT TO THE
BEST OF MY KNOWLEDGE AND BELIEF
Robert W. Gubala
TITLE Engineer Of Property Maps
DATE March, 1982

CITY OF HARTFORD
MAP SHOWING LAND RELEASED TO
WESTTOWN PROPERTIES, LTD.
BY
THE STATE OF CONNECTICUT
FARMINGTON AVE.

SCALE 1" = 40'
ROBERT W. GUBALA
TRANSPORTATION CHIEF ENGINEER-BUREAU OF HIGHWAYS
MARCH 1982

