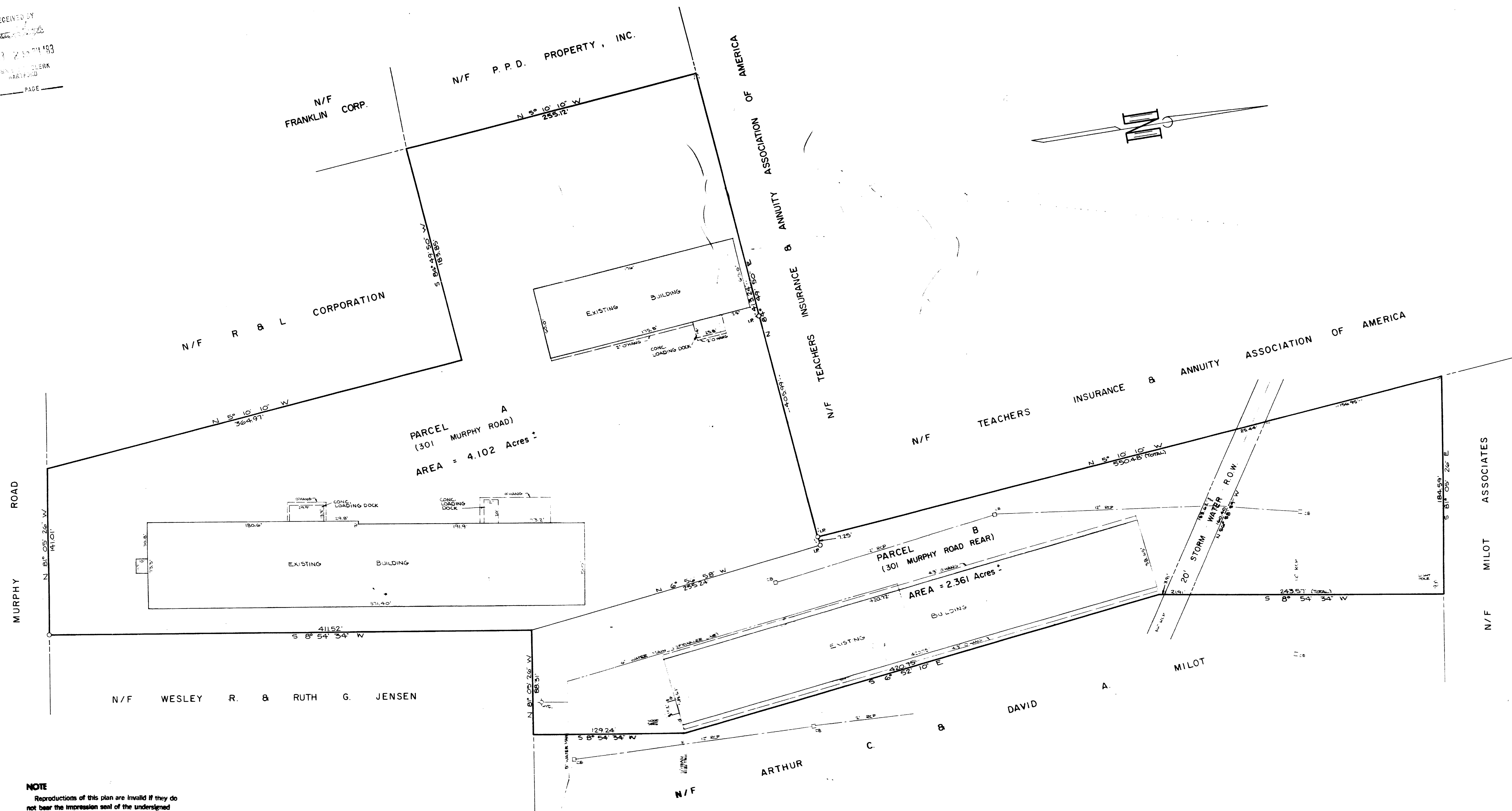


RECEIVED BY  
JUL 13 2 15 PM '83  
TOWN CLERK  
HARTFORD  
VOL PAGE



**NOTE**  
Reproductions of this plan are invalid if they do not bear the impression seal of the undersigned Land Surveyor and/or Professional Engineer.

Certified To:  
Ticor Title Insurance Company  
First Bank  
Gerard Realty Corporation

I hereby certify that this survey was actually made upon the ground and that it, and the bounds and measurements shown hereon are correct within the standards of Class A-2 of the Code of Connecticut Association of Land Surveyors, Inc., and that, unless otherwise shown, title lines and lines of actual possession are the same, buildings are located as shown and do not encroach over or upon street, title or building lines and there are no easements or encroachments affecting this property apparent from a careful inspection of the same other than those shown and depicted hereon.

*Reino E. Hyppa*  
Reino E. Hyppa L.S.V.P.E. Reg. No. 3924

**NOTES:**

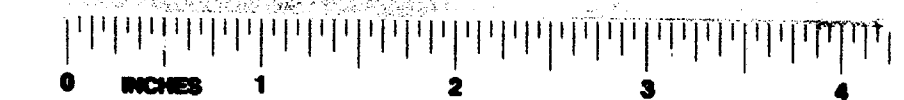
- REFERENCE IS HEREBY MADE TO THE FOLLOWING MAPS:
  - 301 MURPHY ROAD REAR PREPARED FOR GERARD REALTY CORPORATION HARTFORD, CONN. BY REINO E. HYPPA & ASSOCIATION CIVIL ENGINEERS & LAND SURVEYORS GLASTONBURY, CONN. SCALE 1"=40' DATE 2-28-83 MAP NO. 15-83-1.
  - PROPERTY OF BARR EAU MOINS & STORAGE INC. 301 MURPHY ROAD HARTFORD, CONNECTICUT BY HALL, SEY & ENGINEERING ASSOCIATES INC. STRUCTURAL & CONSULTING ENGINEERS 240 SILAS DEANE HIGHWAY WETHERFIELD, CONNECTICUT DATE 1-24-78 SCALE 1"=20' REVISED THRU 1-79.
- WATER MAIN AND STORM DRAINS AS SHOWN TAKEN FROM M.D.C. RECORDS. LOCATIONS AS SHOWN ARE APPROXIMATE.

The portion of Murphy Rd. shown on this plan is an established public street of the City of Hartford.

7/22/83  
Date *Reino E. Hyppa*  
City Engineer

PREPARED FOR  
**GERARD REALTY CORPORATION**  
HARTFORD, CONN.

REINO E. HYPPA & ASSOCIATES  
CIVIL ENGINEERS & LAND SURVEYORS  
GLASTONBURY, CONN.  
SCALE 1"=40' DATE 5-13-83 MAP NO. 15-83-1A



15-83-1A-1  
1247  
CIVIL