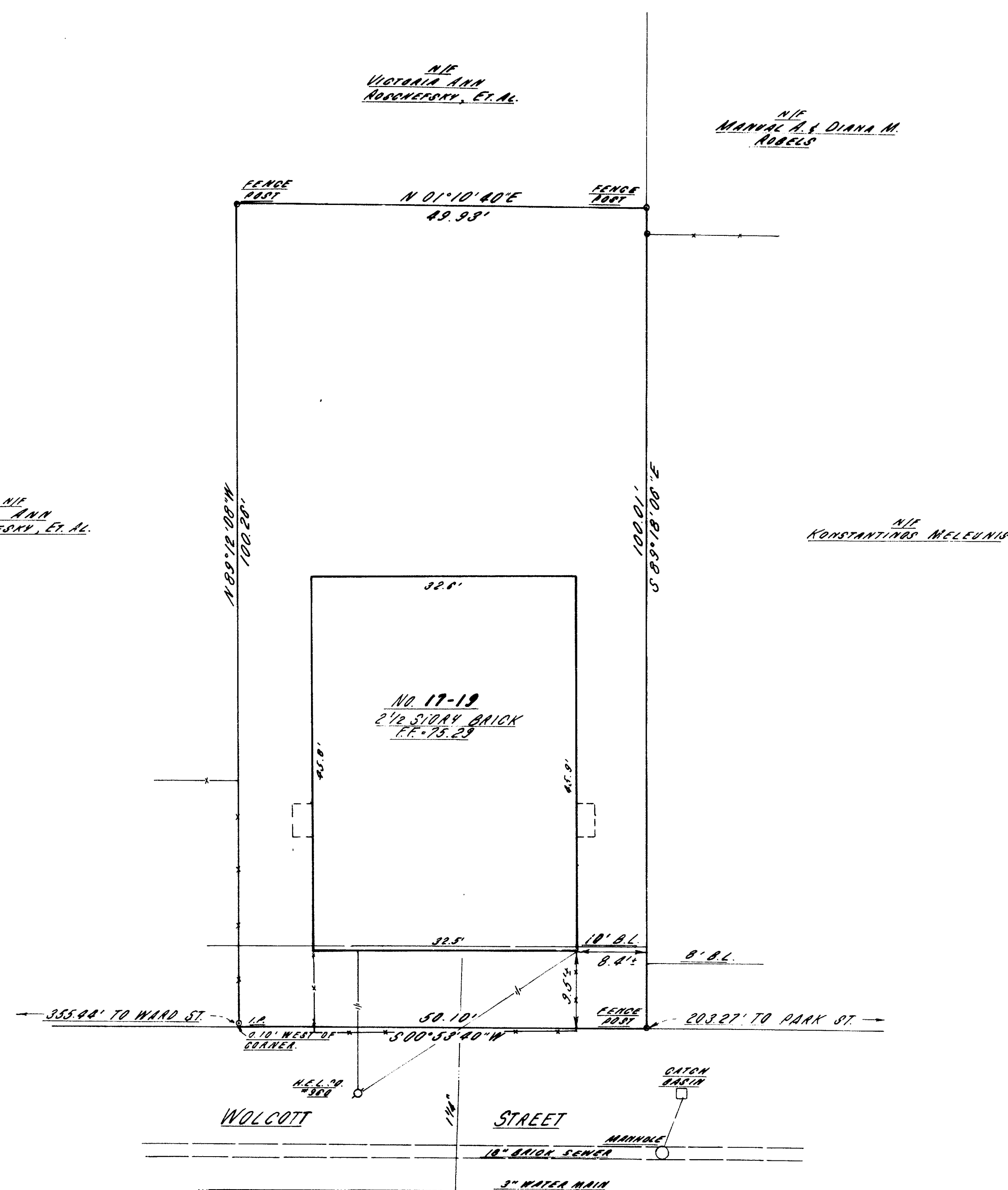


RECEIVED BY
 19-10-4 01 PM '83
 JOHN A. COTTELL
 HARTFORD
 PAGE



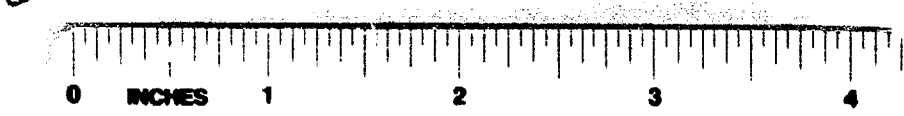
AREA = 3008.5 S.F.
 BUILDING COVERAGE = 50%

The portion of Wolcott St. shown on this plan and Ward St. and Park St. referred to are established public streets of the City of Hartford.

5/16/83
 Date
 City Engineer

THE STATE OF CONNECTICUT DEPARTMENT OF HOUSING,
 WOLCOTT PLACE LIMITED PARTNERSHIP,
 COVENANT TITLE INSURANCE COMPANY AND
 SECRETARY OF HOUSING AND LAND DEVELOPMENT
 I hereby certify that this survey was actually made upon the ground on 5/12/83, and upon on 5/12/83 and that it and the bounds and measurements shown hereon are correct within the standards of a Class "A-2" survey as defined in the Code of Practice for Standards of Accuracy of Surveys and Maps, adopted December 10, 1975, and as amended by the Connecticut Association of Land Surveyors, Inc. and that, unless otherwise shown, dead lines and lines of actual possession are the same, buildings are located as shown and do not encroach over or upon street, deed or building lines, there are no violations of zoning regulations with reference to the location of said buildings, and there are no easements or encroachments affecting this property apparent from a careful inspection of the same, other than those noted and depicted hereon.
 CLOSE, JENSEN & MILLER
 Civil Engineers & Surveyors
 by John H. Miller

Designed Drawn Checked Date Scale	 Close, Jensen & Miller Consulting Engineers, Land Planners & Surveyors 449 Silas Deane Highway Wethersfield, Connecticut 06109	 PROPERTY TO BE CONVEYED TO "WOLCOTT PLACE LIMITED PARTNERSHIP" 17-19 WOLCOTT STREET HARTFORD, CONNECTICUT	Sheet No. ONE Of ONE File No. M1956
		Revisions 1 5/12/83 Up date A-2 Cert.	



1290