

01478

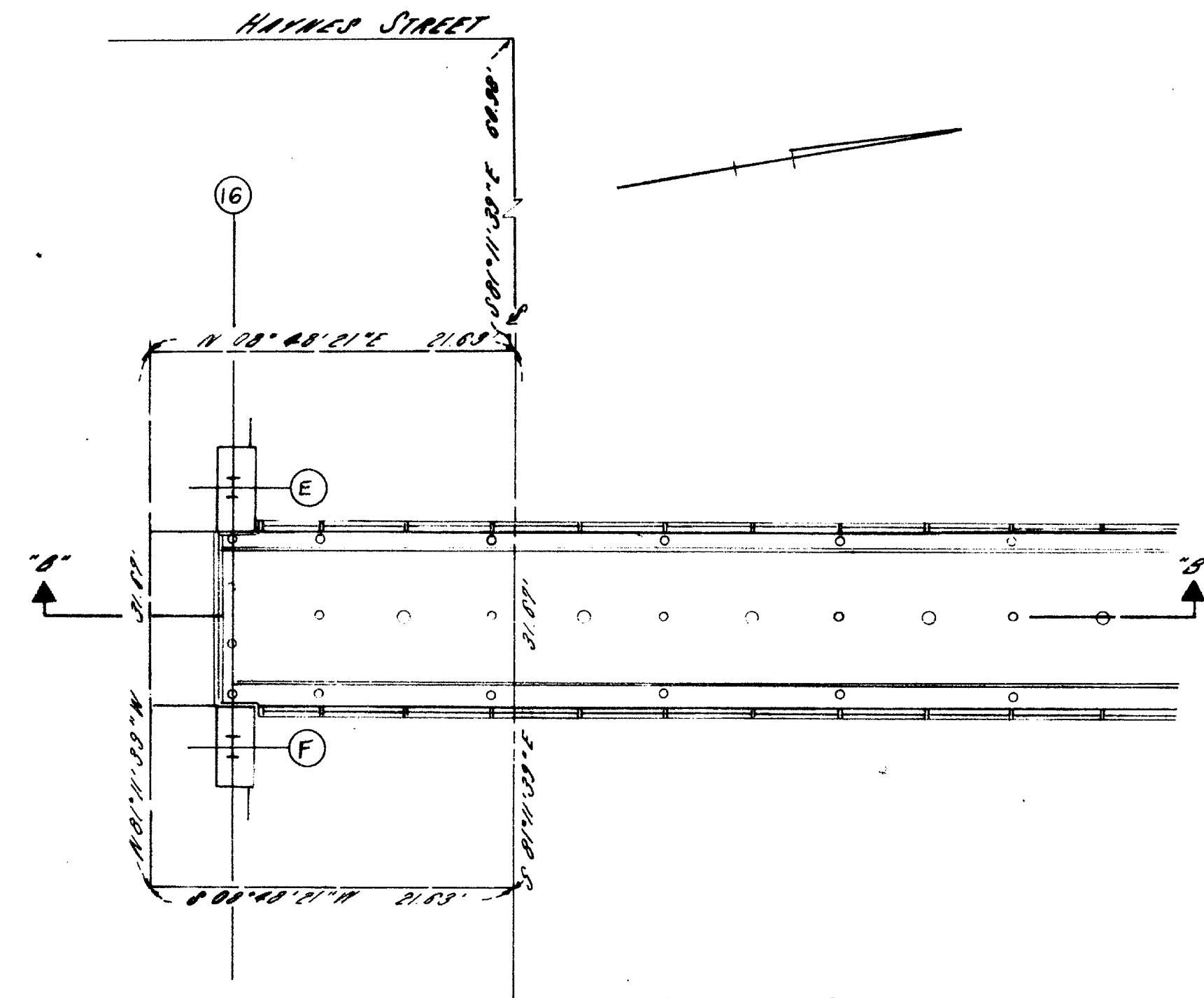
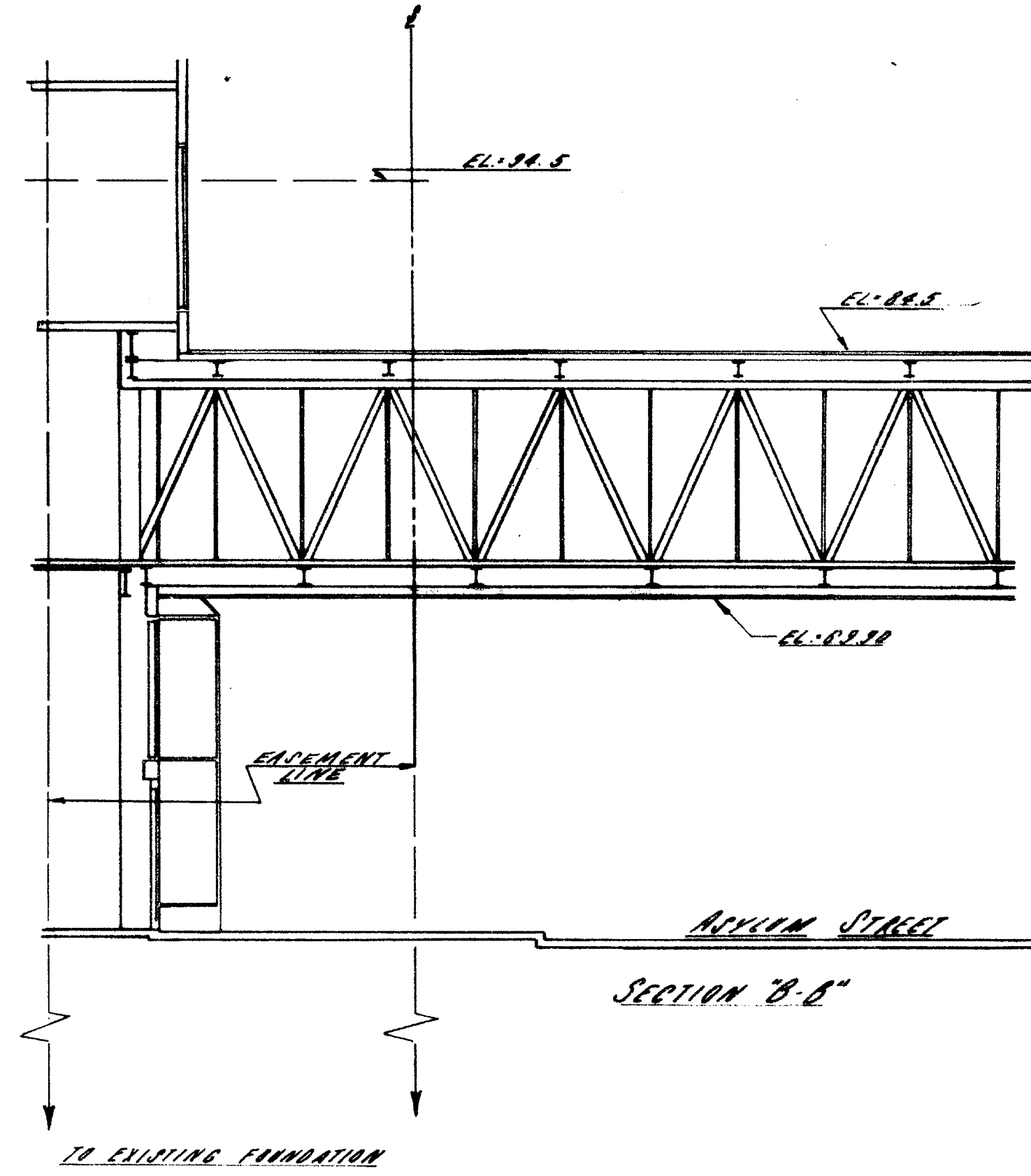
RECEIVED BY

W. H. G. E.

MAY 12 3 1983

TOWN & CITY CLERK
HARTFORD

PAGE


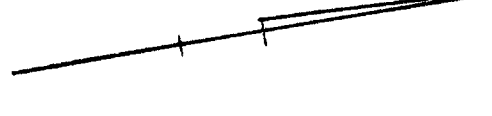


NOTE: ELEVATIONS M.D. DRAIN

The portions of Asylum St. and Haynes St. shown on this plan are established public streets of the City of Hartford.

5/26/83
Date
John P. Miller
City Engineer

I hereby certify that this map and survey were prepared in accordance with the standards of a Class A-Z survey as defined in the Code of Practice for Standards of Accuracy of Surveys and Maps, adopted December 10, 1975, and as amended by the Connecticut Association of Land Surveyors, Inc.
CLOSE, JENSEN & MILLER
Civil Engineers & Surveyors
By *John P. Miller*

Designed	CJ Close, Jensen & Miller Consulting Engineers, Land Planners & Surveyors 440 Silas Deane Highway Wethersfield, Connecticut 06109		CITY PLACE VENTURE RAILROAD SEPARATION EASEMENT ON CITY PLACE ASYLUM STREET HARTFORD, CONNECTICUT		No. Date Description Revisions	Sheet No.
Drawn						/
Checked						/
Date						5/26/83
Scale						1/4" = 1'-0"
						File No.

1287

