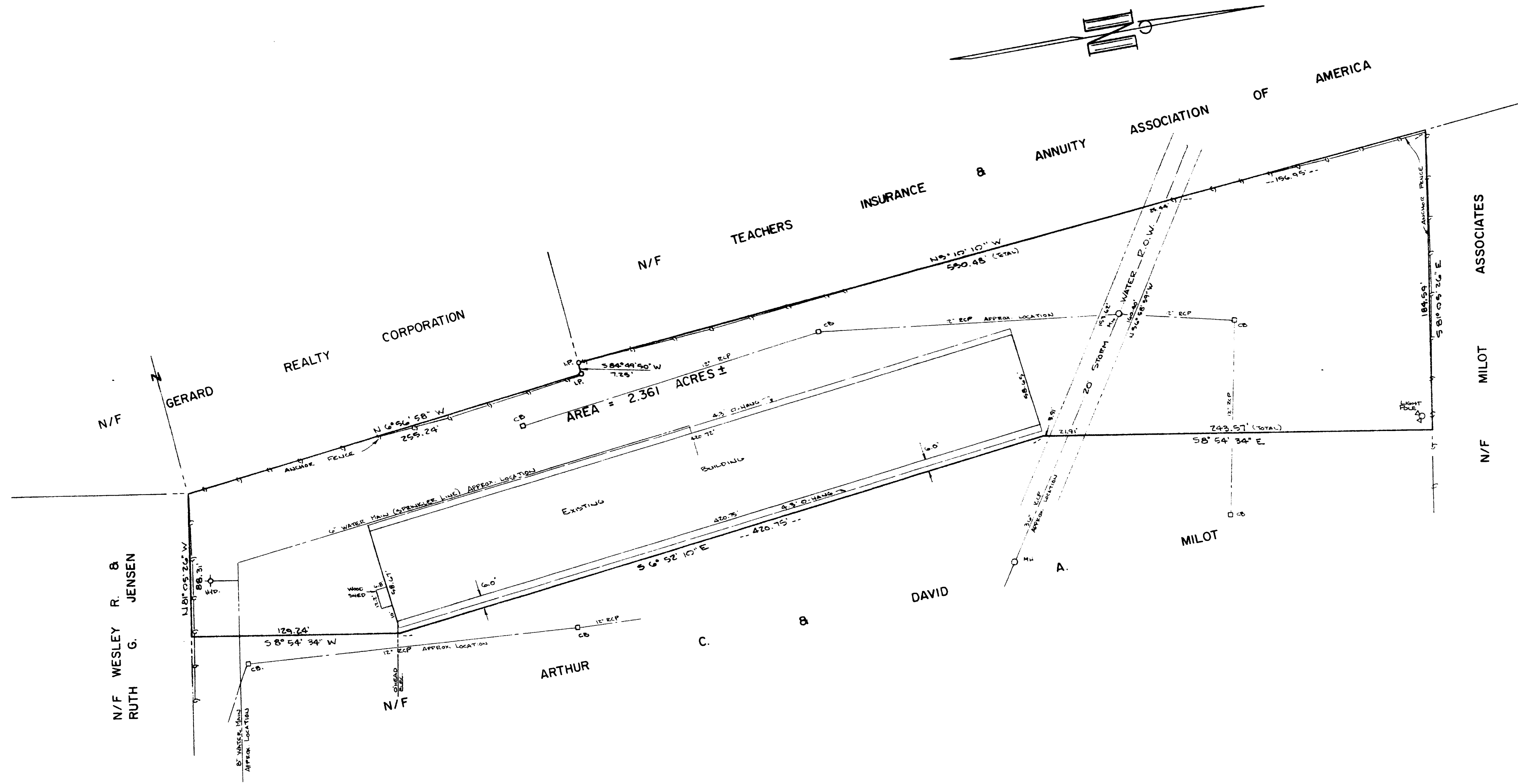


FILED
1284

RECEIVED BY
Mar 4 3 1983
HARTFORD
PAGE



NOTE
WATER MAIN AND STORM DRAINS AS SHOWN TAKEN FROM
M.D.C. RECORDS. LOCATIONS AS SHOWN ARE APPROXIMATE.

NOTE
Reproductions of this plan are invalid if they do
not bear the impression seal of the undersigned
Land Surveyor and/or Professional Engineer.

Certified To:
Ticor Title Insurance Company
Milot Associates,
Arthur C. & David A. Milot, Trustees under a declaration of trust
dated July 27, 1973,
First Bank,
Gerard Realty Corporation

I hereby certify that this survey was actually made upon the ground and
that it, and the bounds and measurements shown hereon are correct within
the standards of Class A-2 of the Code of Connecticut Association of Land
Surveyors, Inc., and that, unless otherwise shown, title lines and lines of
actual possession are the same, buildings are located as shown and do
not encroach over or upon street, title or building lines and there are no
assessments or encroachments affecting this property apparent from a careful
inspection of the same other than those shown and depicted hereon.

Reino E. Hyypa
Reino E. Hyypa, P.E. Reg. No. 3924

The portion of Murphy Rd. referred to on this plan
is an established public street of the City of
Hartford.
Date *5/1/83* City Engineer *Stephen J. Hyypa*

"301 MURPHY ROAD REAR"
PREPARED FOR
GERARD REALTY CORPORATION
HARTFORD, CONN.

REV 5-3-83 LIGHT POLE ADDED
REINO E. HYYPÄ & ASSOCIATES
CIVIL ENGINEERS & LAND SURVEYORS
GLASTONBURY, CONN.
SCALE 1" = 40' DATE 2-28-83 MAP NO. 15-83-1

