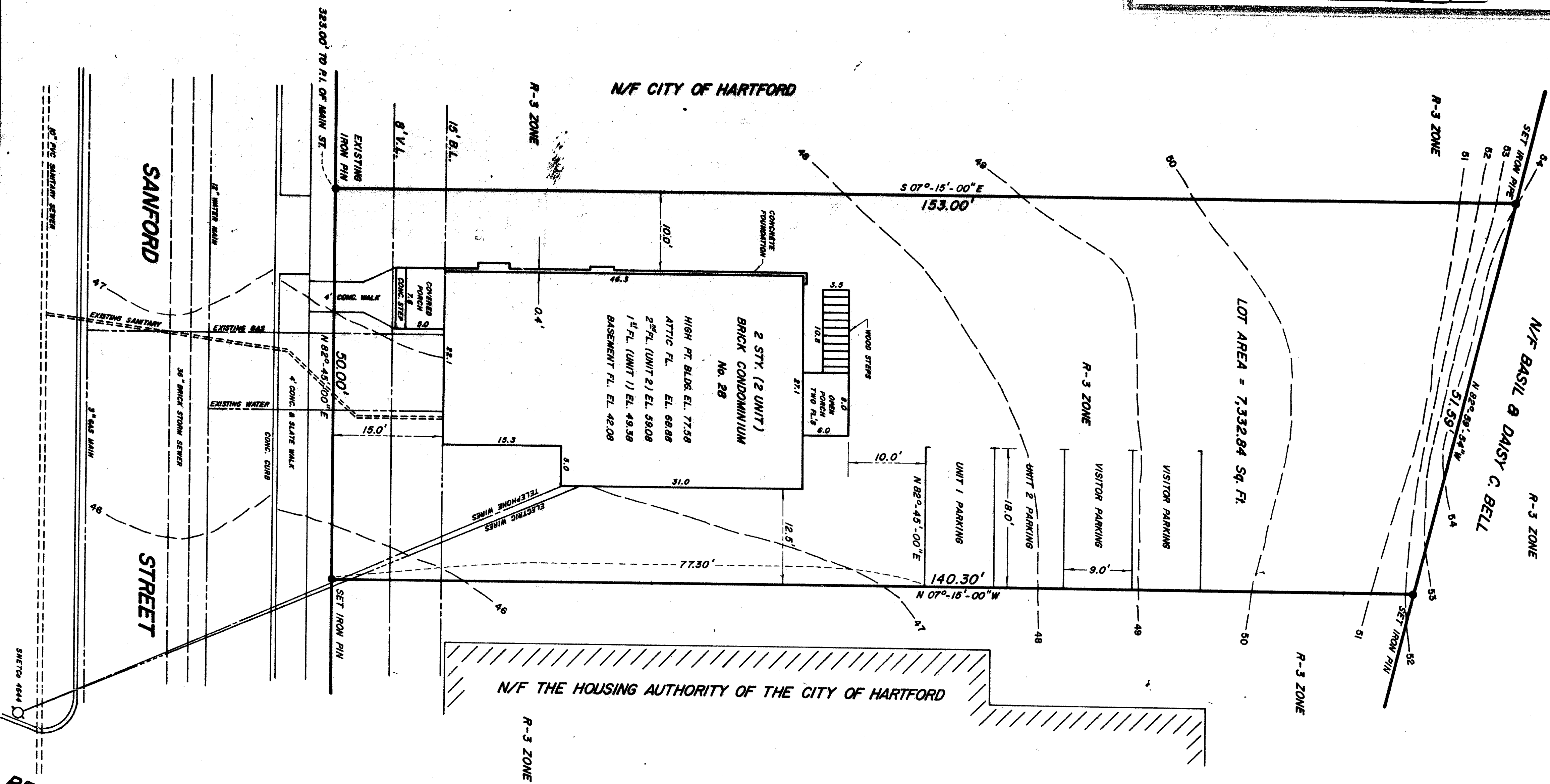


1282-1



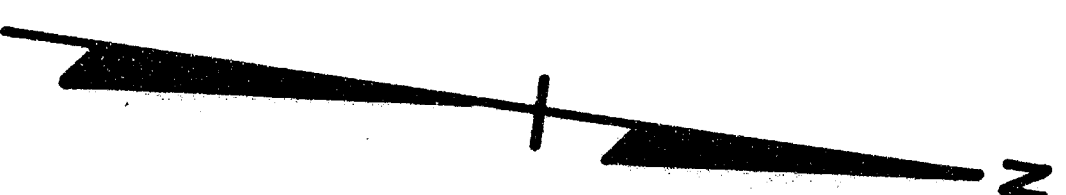
I HEREBY CERTIFY TO MOUNT OLIVE BAPTIST ASSOCIATION, STATE OF CONNECTICUT DEPARTMENT OF HOUSING, CITY OF HARTFORD, CHICAGO TITLE INSURANCE COMPANY, THAT THIS SURVEY WAS ACTUALLY MADE UPON THE GROUND ON MARCH 15, 1983 AND THAT IT AND THE BOUNDS AND MEASUREMENTS SHOWN HEREON ARE CORRECT WITHIN THE STANDARDS OF A CLASS A-2 SURVEY AS DEFINED BY THE BOARD OF REGISTRATION FOR PROFESSIONAL ENGINEERS AND LAND SURVEYORS, AND THAT UNLESS OTHERWISE SHOWN, TITLE LINE AND LINES OF ACTUAL POSSESSION ARE THE SAME. THE BUILDING IS LOCATED AS SHOWN AND DOES NOT ENCRUMB OVER OR UPON STREET, TITLE OR BUILDING LINES. THERE ARE NO ZONING REGULATIONS VIOLATED AND THERE ARE NO EASEMENTS OR ENCROACHMENTS AFFECTING THIS PROPERTY APPARENT FROM A CAREFUL INSPECTION OF SAME.

Bernie Dubiel March 15, 1983
BERNIE DUBIEL L.S. 9673

NOTE: M.D.C. DATUM USED FOR FLOOR AND GROUND ELEV.

The portions of Sanford St. and Bellevue St. shown on this map are established public streets of the City of Hartford.

9/6/83
Date
Bernie Dubiel
City Engineer



AUT L.V.C.E.
HARTFORD
JUNE 2, 1983
VND 53 3 58 PM '83
RECEIVED BA

SANFORD STREET CONDOMINIUM
28 SANFORD STREET
HARTFORD, CONNECTICUT

SCALE: 1" = 10'
DUBIEL ASSOCIATES

MARCH 15, 1983
SURVEY 330

SURVEY
1 OF 5

1282
L.S. 9673
MARCH 15, 1983