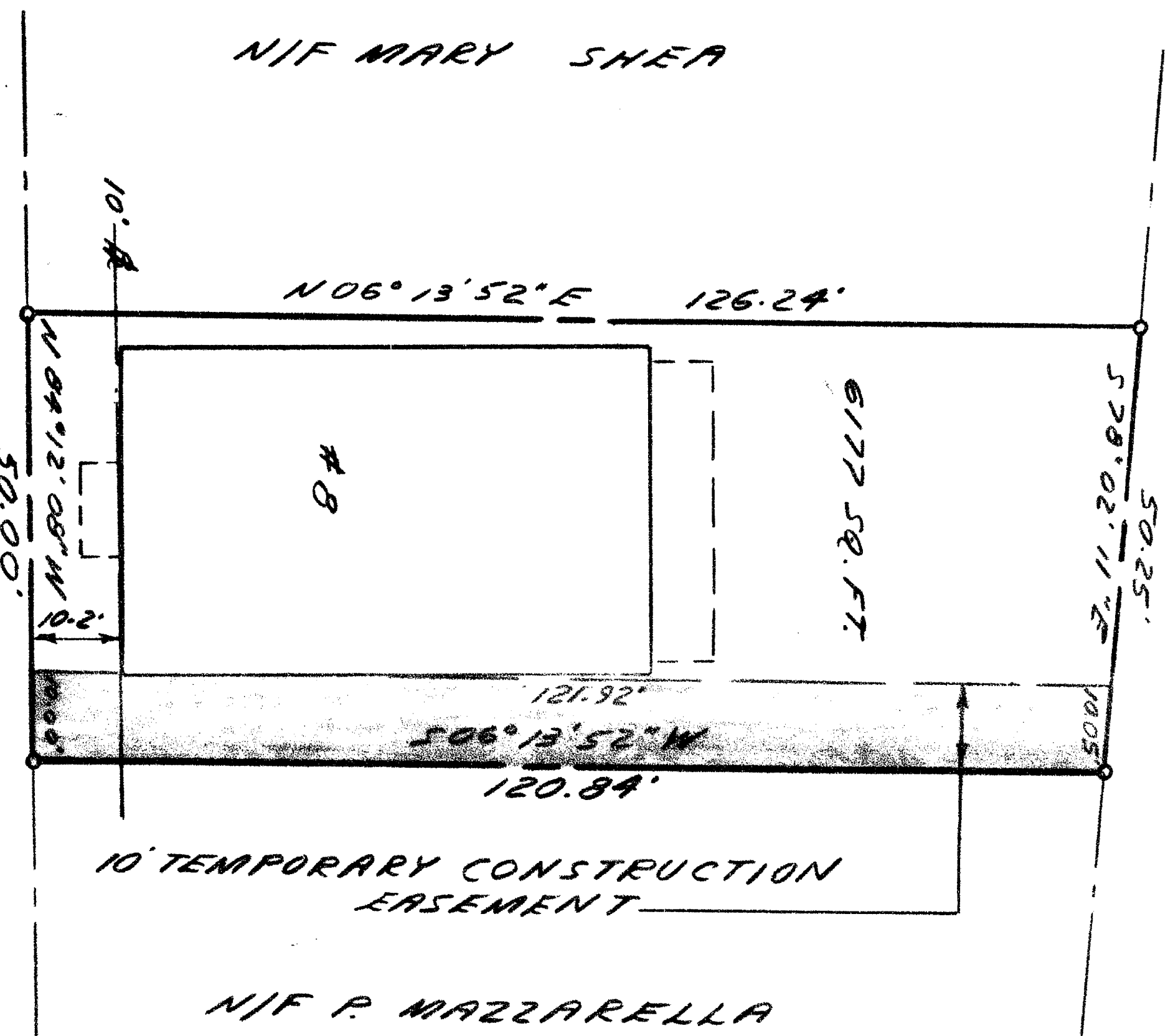
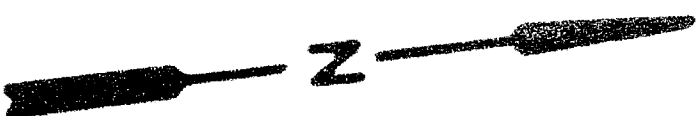


1278-1

EASI FILE CORP IRVINE CA EPH 34
1278

NIF HUDSON SOCIETY OF CONNECTICUT

REVIEWED BY
DATE 2-15-83
DRAWN BY
DATE 1-24-83



GRAND STREET

The portion of Grand St. shown on this plan is an established public street of the City of Hartford.

I HEREBY CERTIFY THAT THIS MAP AND SURVEY WERE PREPARED IN ACCORDANCE WITH THE STANDARDS OF A CLASS A-2 SURVEY AS DEFINED IN THE CODE OF PRACTICE FOR STANDARDS OF ACCURACY OF SURVEYS AND MAPS, ADOPTED DECEMBER 10, 1975 AS AMENDED BY THE CONNECTICUT ASSOCIATION OF LAND SURVEYORS, INC.

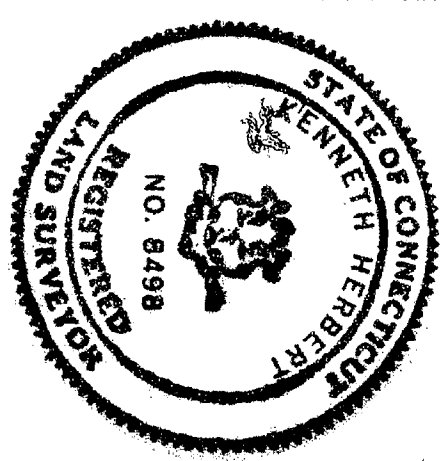
5/9/81
Date
George F. Deane
City Engineer

12/82
DATE
8498
REVISION NO.

PROPOSED EASEMENT TO
THE STATE OF CONNECTICUT

HALLISEY & HERBERT
CIVIL ENGINEERS & LAND SURVEYORS
2317 SILAS DEANE HIGHWAY, ROCKY HILL, CONNECTICUT

PROPERTY OF
NICHOLAS PHILLIPS JR. ET AL
8 GRAND STREET
HARTFORD, CONNECTICUT



DRAWN BY: JD
CHECKED BY: KH
DATE: 26 JULY 82
SCALE: 1" = 20'
SHEET 1 OF 1

JOB NO.
511

REVISIONS:
10 JAN 83

50 188

4/30

0 INCHES 1 2 3 4