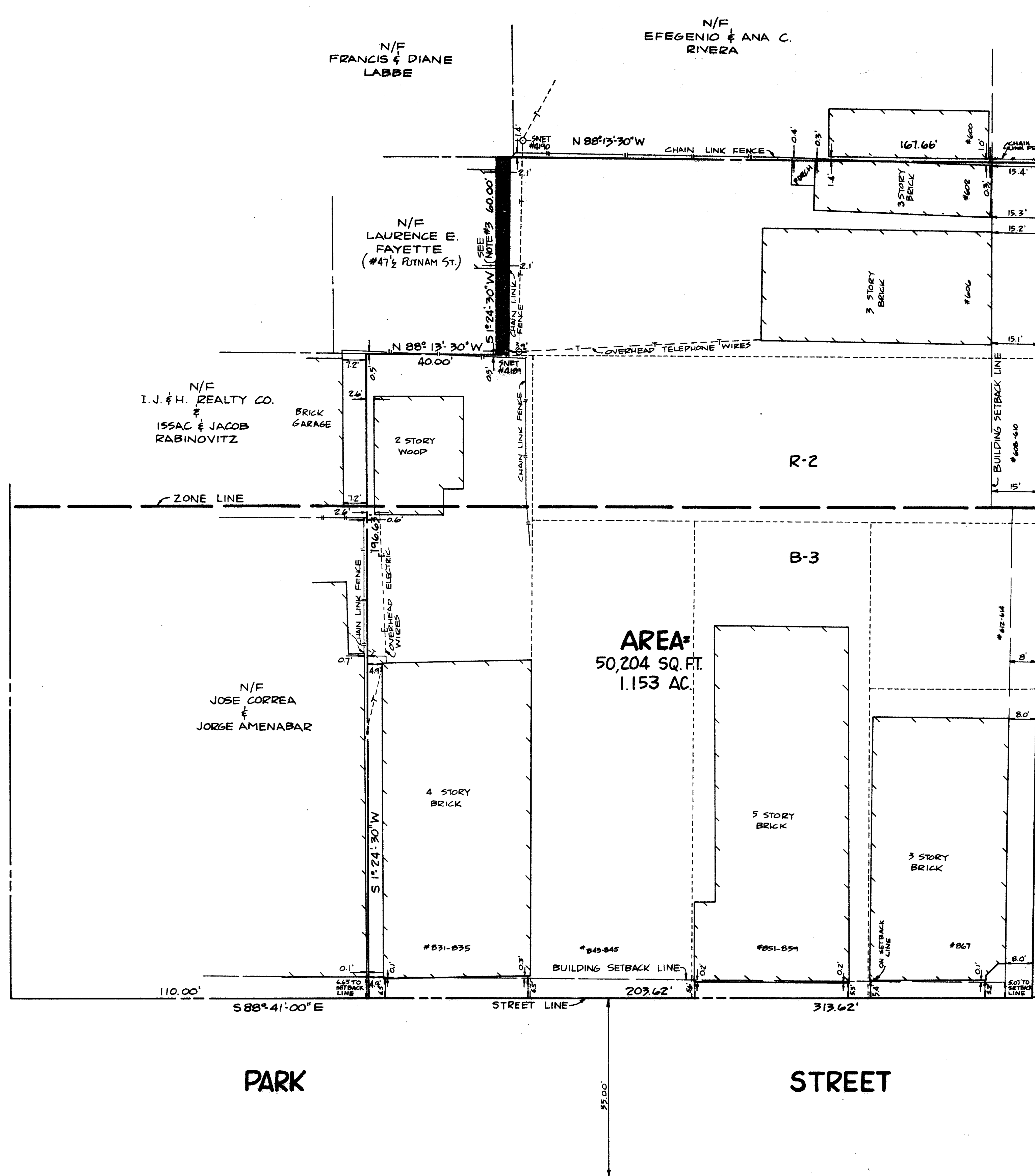


PUTNAM STREET

STREET

ZION STREET

PARK STREET



- NOTES:
- 1) BEARINGS REFER TO APPROXIMATE NORTH.
 - 2) THE PROPERTY IS ZONED B-3 (BUSINESS DISTRICT) AND R-2 (RESIDENTIAL DISTRICT). THE BUILDING SETBACKS ARE GENERALLY: SIDE 8 FEET AND 12 FEET, REAR 30 FEET IN B-3, SIDE 5 FEET AND 10 FEET, REAR 30 FEET IN R-2.
 - 3) THE SHADED AREA ADJACENT TO #47 1/2 PUTNAM ST. IS A PORTION OF THE PROPERTY THAT IS ALSO INCLUDED IN THE CURRENT DEED DESCRIPTION FOR #47 1/2 PUTNAM ST. AND HAS BEEN INCLUDED IN THE FORMER DESCRIPTIONS SINCE OCT. 14, 1953.

PROPERTY MAP
ZION & PARK STREETS
HARTFORD, CONNECTICUT
PREPARED FOR
ZION PARK ASSOCIATES, LIMITED PARTNERSHIP

The portions of Putnam St, Park St and Zion St shown on this plan are established public streets of the City of Hartford.
4/8/83 Date
George C. Hopper City Engineer

I HEREBY CERTIFY TO ZION HILL, INC., ZION PARK ASSOCIATES, LIMITED PARTNERSHIP, STATE OF CONNECTICUT, DEPARTMENT OF HOUSING, FIRST AMERICAN TITLE INSURANCE CO., SECRETARY, UNITED STATES DEPARTMENT OF HOUSING AND URBAN DEVELOPMENT, THAT THIS SURVEY WAS ACTUALLY MADE UPON THE GROUND ON DECEMBER 22, 1980 AND THAT IT AND THE BOUNDS AND MEASUREMENTS SHOWN HEREON ARE PREPARED IN ACCORDANCE WITH THE STANDARDS OF A CLASS A-2 SURVEY AS DEFINED IN THE CODE OF PRACTICE FOR STANDARDS OF ACCURACY OF SURVEYS AND MAPS, ADOPTED DECEMBER 10, 1975, AS AMENDED BY THE CONNECTICUT ASSOCIATION OF LAND SURVEYORS, INC., AND THAT UNLESS OTHERWISE DEPICTED OR NOTED HEREON, DEED LINES AND LINES OF POSSESSION ARE THE SAME, BUILDINGS ARE LOCATED AND DO NOT ENCR OACH OVER STREET, DEED OR BUILDING LINES, THERE ARE NO VIOLATIONS OF ZONING REGULATIONS WITH REFERENCE TO THE LOCATION OF SAID BUILDINGS, AND THAT THERE ARE NO EASEMENTS, ENCROACHMENTS OR USES AFFECTING THIS PROPERTY APPARENT FROM A CAREFUL PHYSICAL INSPECTION ON FEBRUARY 25, 1982 OF THE SAME OTHER THAN THOSE DEPICTED OR NOTED HEREON.

Lawrence M. Fisher, L.S. NO. 11343



3	5-2-83	SURVEY UPDATED, TITLE CHANGE 3000058 7944
2	5/8/82	BUILDING LINE REVISED
1	3-17-80	SURVEY, UPDATE, TITLE CHANGE

CAHN ENGINEERS INC.
CONSULTING ENGINEERS
ALBANY, NEW YORK
SCALE: 1"=20' DATE: JAN. 1981
DRAWN BY: REYNOLDS CHECKED BY: WILKES
DESIGNED BY: WILKES CHECKED BY: FWC
REVISIONS: JCF

1274

1142

