

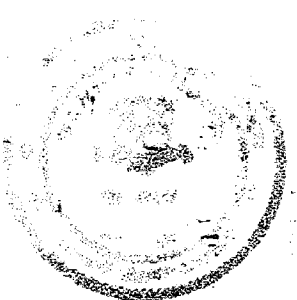
I HEREBY CERTIFY TO THE U.S. LIFE TITLE INSURANCE CO. OF NEW YORK THAT THIS SURVEY WAS MADE ON THE GROUND OCTOBER 20, 1981 AND THAT IT AND THE BOUNDS AND MEASUREMENTS SHOWN HEREON ARE CORRECT, AND THAT, UNLESS OTHERWISE SHOWN, TITLE LINES AND LINES OF ACTUAL POSSESSION ARE THE SAME; THE BUILDINGS ARE LOCATED AS SHOWN AND DO NOT ENCROACH OVER OR UPON STREET, OR TITLE LINES. THERE ARE NO ZONING REGULATIONS VIOLATED AND THERE ARE NO EASEMENTS OR ENCROACHMENTS AFFECTING THIS PROPERTY APPARENT FROM A CAREFUL INSPECTION OF SAME. EXISTING BUILDINGS NON-CONFORMING TO PRESENT MINIMUM SIDE YARD AND REAR YARD ZONING REGULATIONS.

Gerhie Dubiel October 20, 1981
GERHIE DUBIEL L.S. 9675 OCTOBER 20, 1981

NOTE: ELEVATIONS ESTABLISHED FROM THE METROPOLITAN DISTRICT GEODETIC CONTROL DATUM.

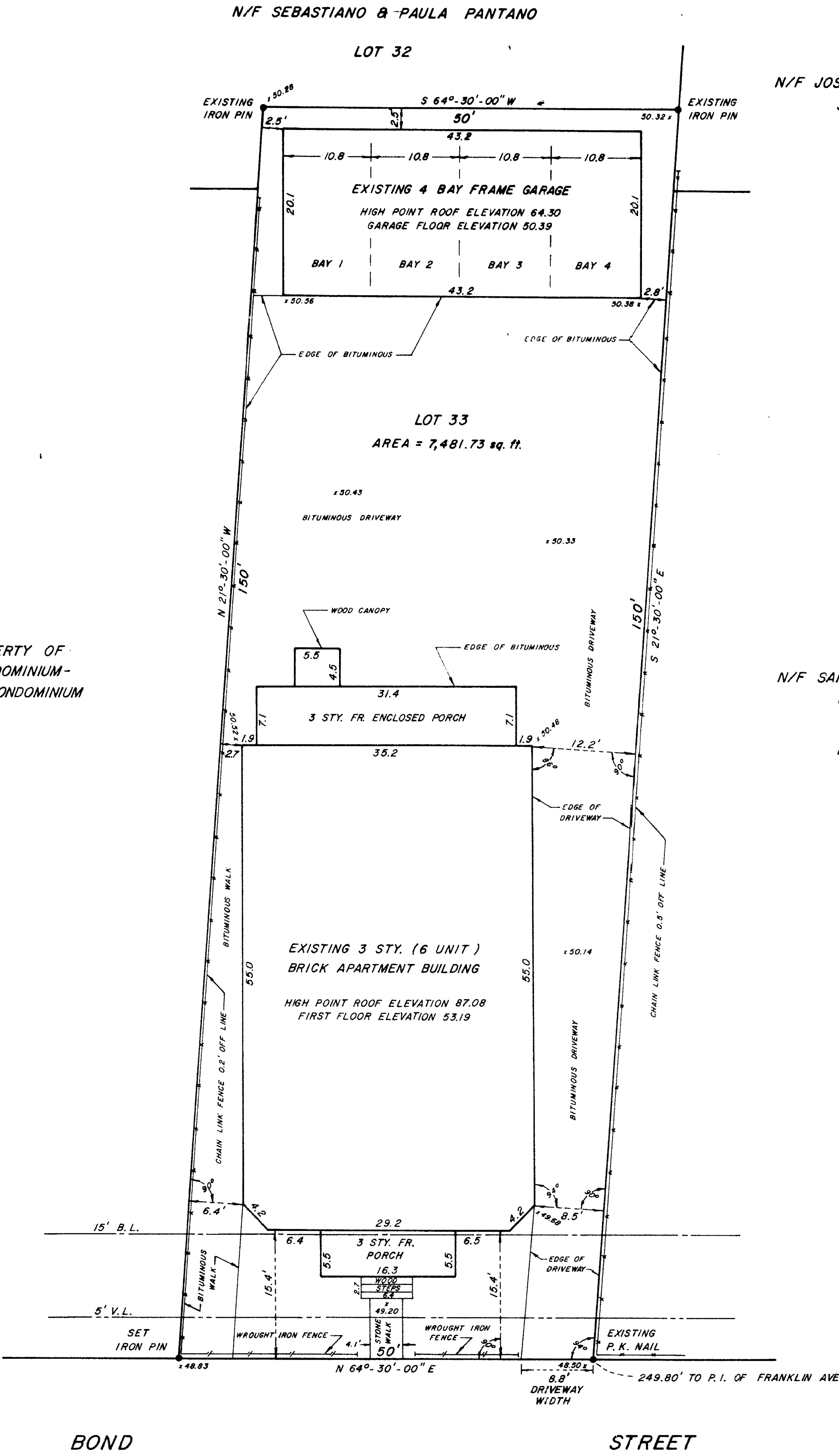
I HEREBY CERTIFY THAT THIS MAP AND SURVEY WAS PREPARED IN ACCORDANCE WITH THE STANDARDS OF A CLASS A-2 SURVEY AS DEFINED BY THE BOARD OF REGISTRATION FOR PROFESSIONAL ENGINEERS AND LAND SURVEYORS.

Gerhie Dubiel October 20, 1981
GERHIE DUBIEL L.S. 9675 OCTOBER 20, 1981



N/F OTHER PROPERTY OF MARK ONES CONDOMINIUM-AN EXPANDABLE CONDOMINIUM

LOT 28



N/F JOSEPH & SERAFINA SEQUENZIA

LOT 35

N/F SANTO & FILIPPA BOLOGNA

LOT 34

The portion of Bond Street shown on this plan is an established public street of the City of Hartford.

Nov. 2, 1982
Date *George E. Barker*
City Engineer

MAP REFERENCE:
BEING LOT 33 ON A MAP ENTITLED "MAP SHOWING IN PART THE REAL ESTATE BELONGING TO THE ESTATE OF JOHN C. BARKER, SCALE 1 inch = 40 feet, BY L.W. BURT CIV. ENGR. SURVEYOR, AUG. 1909." ON FILE IN THE TOWN CLERK'S OFFICE IN THE CITY OF HARTFORD.

RECEIVED
OCT 29 10 31 AM '82
TOWN & CITY CLERK
HARTFORD, CT

MAP PREPARED FOR
MARK ONES CONDOMINIUM - AN EXPANDABLE CONDOMINIUM
47-49 BOND STREET
HARTFORD, CONNECTICUT

SCALE: 1" = 10'
GERHIE DUBIEL L.S. 9675
OCTOBER 20, 1981
SURVEY 160

