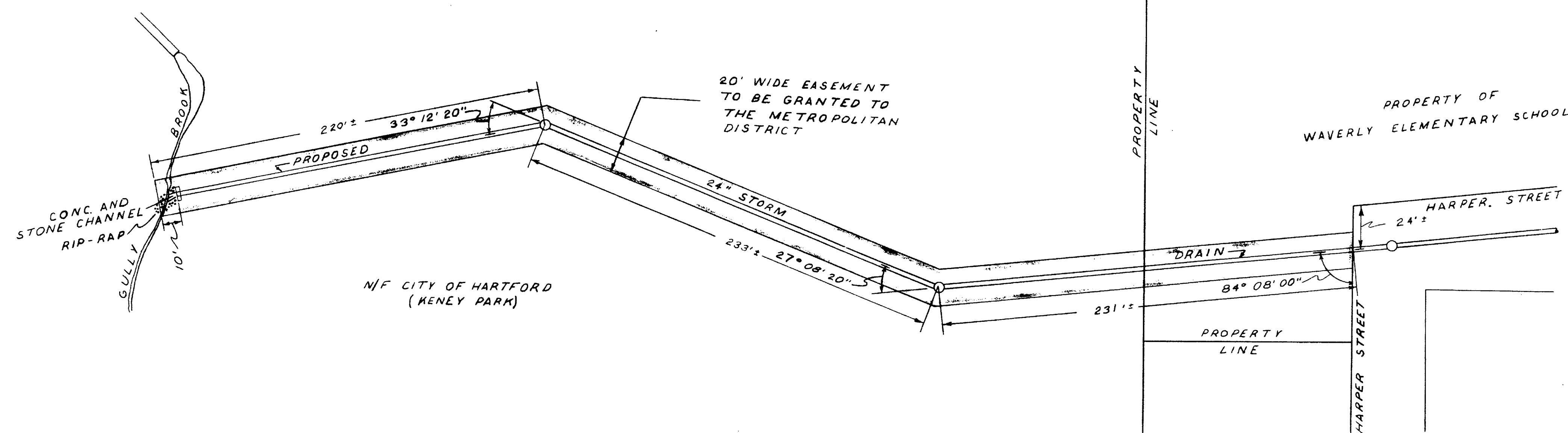


925-1

The southerly portion of Harper Street shown on this plan is an established public street of the City of Hartford.

May 7, 1971

*George E. Heppner*  
City Engineer



RECEIVED  
HARTFORD, CONN.  
MAY 7 9 59 AM '71  
ROBERT J. GALLIVAN  
TOWN & CITY CLERK

CITY OF HARTFORD, CONNECTICUT  
DEPARTMENT OF ENGINEERING

Plan showing the proposed Drain Easement to be granted by the City of Hartford to The Metropolitan District at Harper Street, across Waverly School property and in Kenney Park, Hartford.

SCALE: 1" = 40'

SUBMITTED <i>W. E. Heppner</i> DIVISION ENGINEER	RECOMMENDED <i>Russell E. Long</i> ASST. CITY ENG.	APPROVED <i>George E. Heppner</i> CITY ENGINEER
DESIGN	DRAWN	DAYBOOK NO. 010257
TRACED	CHECK	DATE APRIL 1971

0 INCHES 1 2 3 4

925-1