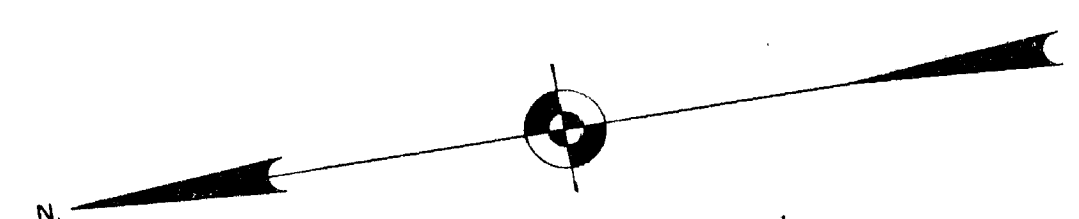


725

RECEIVED  
HARTFORD, CONN.  
JUL 11 11 54 AM '63  
ROBERT J. GALLIVAN  
TOWN & CITY CLERK

The portions of State Street, Market Street and Kinsley Street shown on this plan are established public streets for the City of Hartford.  
July 12, 1963  
*Peter H. Bauer*  
City Engineer



CONNECTICUT BANK & TRUST COMPANY BUILDING  
PROPERTY OF  
**CONSTITUTION PLAZA, INC.**  
MARKET, STATE & KINSLEY STS.

HARTFORD, CONN.

SCALE: 1 INCH = 16 FEET

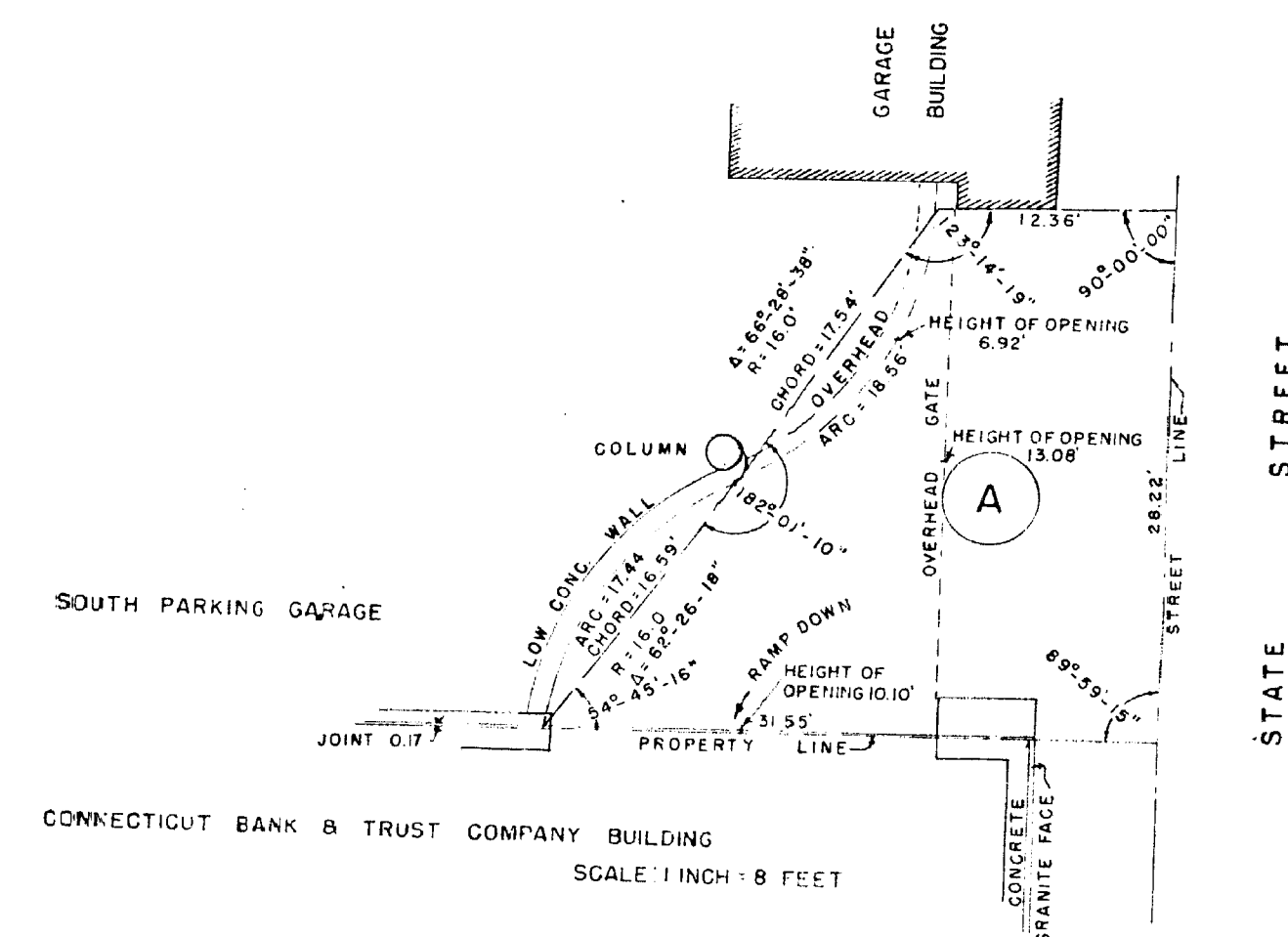
SEPTEMBER, 1962

ADDITIONS JUNE, 1963

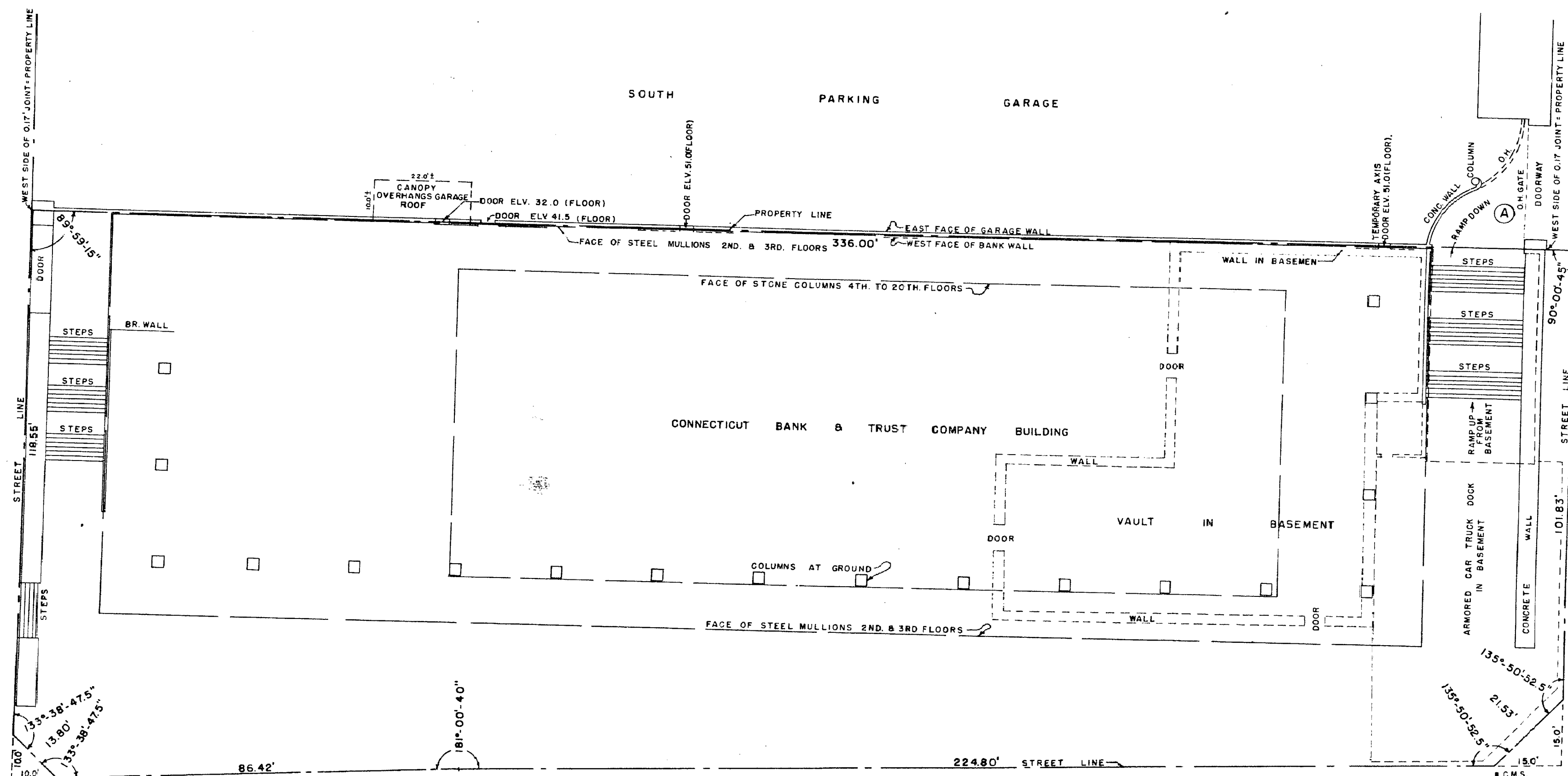
PETERSEN & HOFFMAN, ENGINEERS

I HEREBY CERTIFY THAT THIS MAP IS SUBSTANTIALLY CORRECT

*Edward J. Gallivan*



KINSLEY STREET



STATE STREET

MARKET STREET

STREET

725