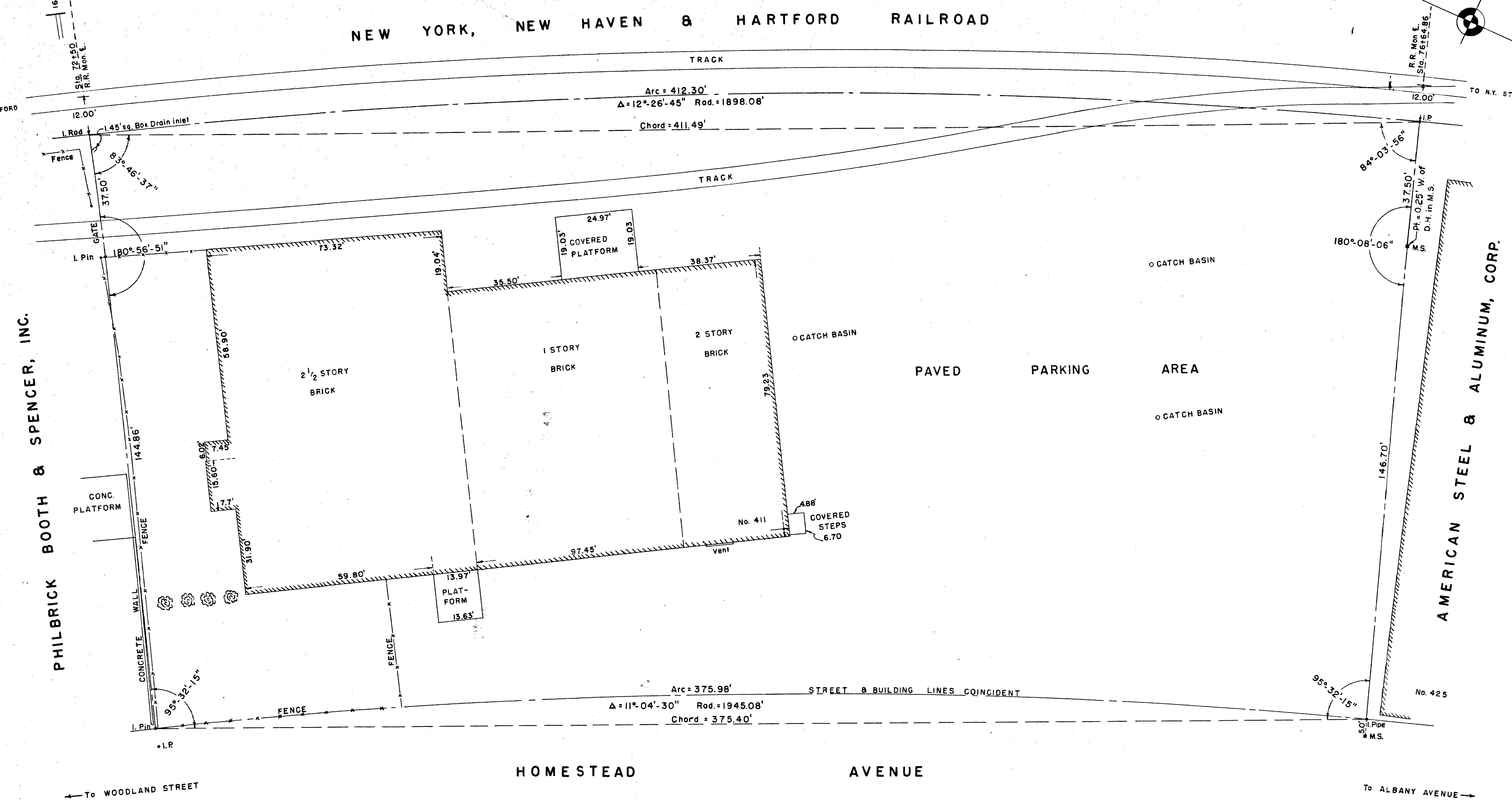


November 1, 1962  
The portion of Homestead Ave. shown  
on this plan is an established public  
street of the City of Hartford.  
*John F. Spencer*  
City Engineer

RECEIVED  
HARTFORD, CONN.  
Nov 1 12 41 PM '62  
LUCAS L. GALLAGHER  
TOWN & CITY CLERK



PROPERTY OF  
**EMHART MANUFACTURING COMPANY**  
PLANT No. 2  
HOMESTEAD AVENUE  
HARTFORD, CONNECTICUT  
SCALE: 1 INCH = 16 FEET  
AUGUST, 1962  
PETERSEN & HOFFMAN, ENGRS.  
SUCCESSORS TO SPENCER & WASHBURN, INC.

I HEREBY CERTIFY THAT THIS MAP IS SUBSTANTIALLY CORRECT.  
*Edward J. Hoffman*