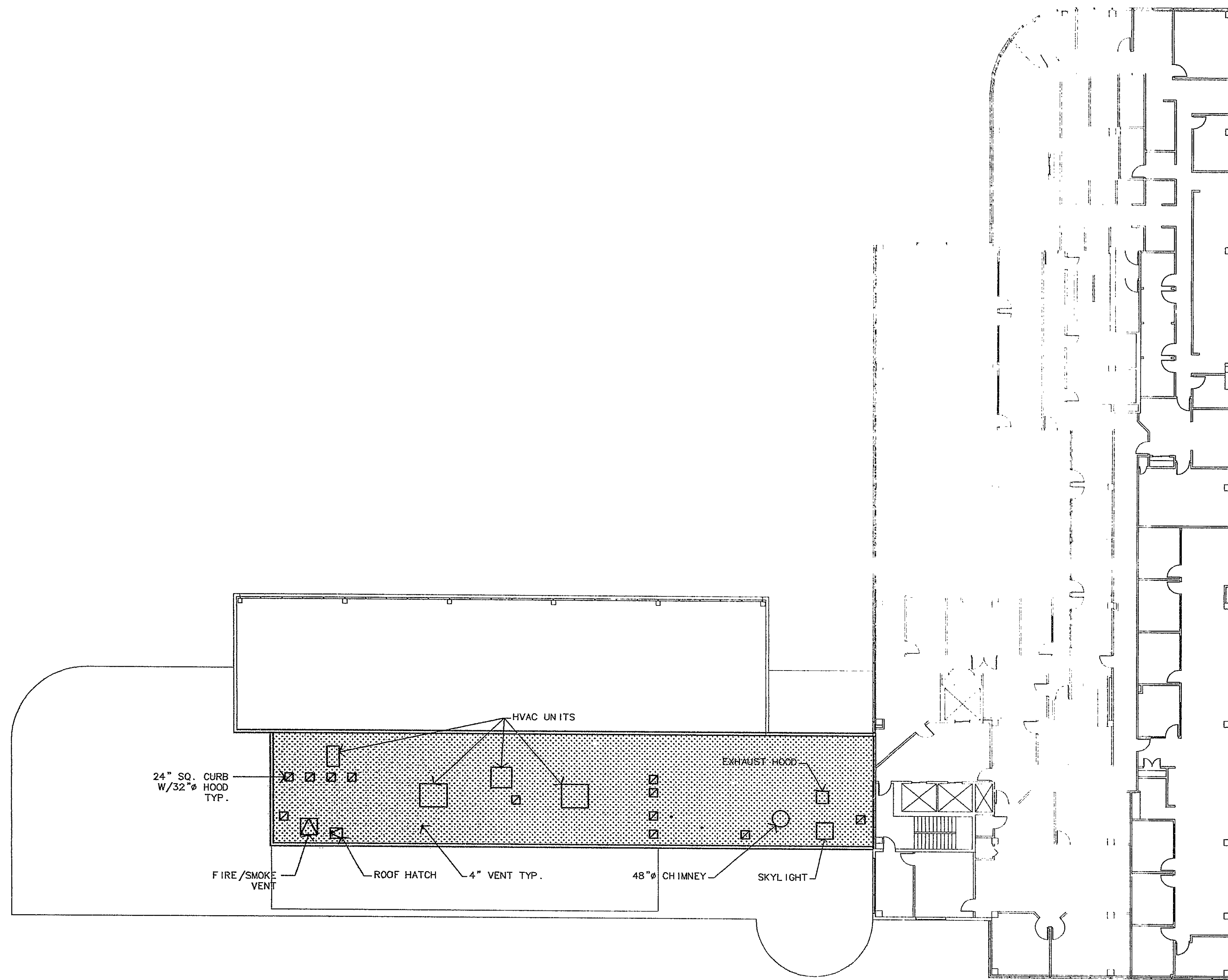


GOOD INFORMATION VIEW
FILE NAME = A2-6-0
DATE AND TIME PLOTTED = 02/28/97-14:29
PLOTTED BY = JHNDICI



GENERAL NOTES:

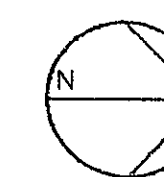
- ROOF UNIT AREAS ARE SUBJECT TO DEVELOPMENT RIGHTS TO SUBDIVIDE UNITS OR CONVERT UNITS INTO COMMON ELEMENTS AND LIMITED COMMON ELEMENTS AS RESERVED IN ARTICLE VIII OF THE CONDOMINIUM DECLARATION.
- THE INTERIOR PARTITION WALLS NEED NOT BE BUILT IN THIS CONFIGURATION.
- THE CONFIGURATION AND LOCATION OF UNIT BOUNDARIES ARE DESCRIBED IN NARRATIVE FORM IN ARTICLE V, SECTION 5.2 OF THE DECLARATION.
- LIMITED COMMON ELEMENTS APPURTENANT TO UNITS ARE DESCRIBED IN NARRATIVE FORM IN ARTICLE VI OF THE DECLARATION.
- LOCATION OF UNIT BOUNDARIES SHOWN ON THIS PLAN IS APPROXIMATE.

ROOF UNIT 3,887 SQ. FT.

I HEREBY CERTIFY TO THE BEST OF MY KNOWLEDGE AND BELIEF THAT THIS PLAN, SCHEDULE A-4 TO THE DECLARATION, CONTAINS ALL THE INFORMATION REQUIRED OF SUCH PLANS AS CONTAINED IN SECTION 47-228 OF THE CONNECTICUT COMMON INTEREST OWNERSHIP ACT. THE WORD "CERTIFY" IS UNDERSTOOD TO BE AN EXPRESSION OF PROFESSIONAL OPINION BY THE ARCHITECT WHICH IS BASED ON HIS OR HER BEST KNOWLEDGE, INFORMATION AND BELIEF. AS SUCH, IT CONSTITUTES NEITHER A GUARANTY OR WARRANTY.

S. S. S. S.
ARCHITECT R.A. No. 1902

0 5 25 FEET
1 10
GRAPHIC SCALE

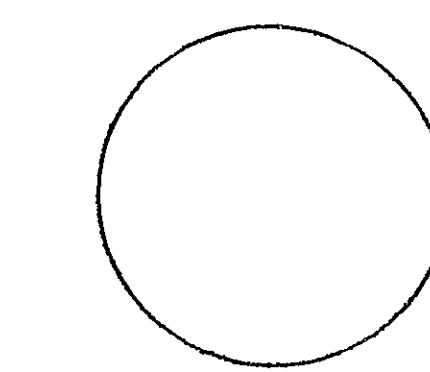


REVISIONS:

CONSULTANTS:

HARTFORD
SQUARE NORTH
A COMMERCIAL CONDOMINIUM

**Jeter
Cook &
Jepson**
Architects, Inc.



P.C. _____
P.M. _____
D.P. _____
J.C. _____
ISSUE 28 FEBRUARY 1997
JOB 9705.00
DRAWN LJ
SCALE 1/16" = 1'-0"

UNIT SIX ROOF PLAN
SCHEDULE A-4
TO THE DECLARATION
SHEET 13 OF 18

A2.6.0R

#116

116
13

0 INCHES 1 2 3 4