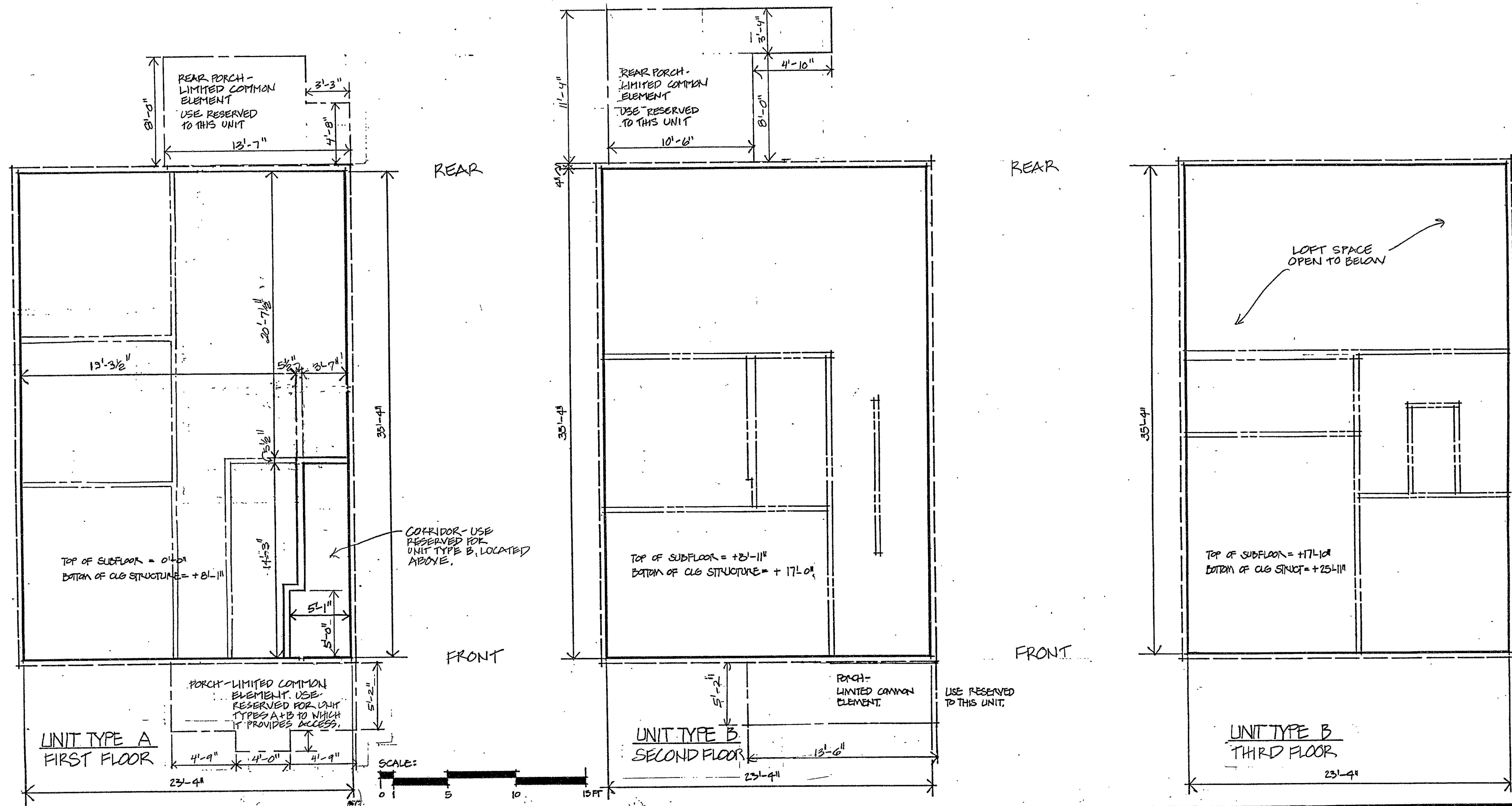


109



- Legend**
- Unit Boundary
  - Exterior Surface
  - Boundary of Limited Common Element
  - Interior Partition Surface

**Notes**

All elevations are referenced to Unit Type "A" floor elevation at **FEUN**.  
All other elevations are  $\pm$  (") or  $\pm$  (") this elevation, as noted.

UNITS 1-5 - ELEVATION AT FIRST FL. -  $92' - 11\frac{1}{2}"$   
UNITS 7-13 - ELEVATION AT FIRST FL. -  $95' - 9\frac{1}{8}"$   
ELEVATIONS BASED ON MDC DATUM 1/14/12.

The following Units are Type A Units:  
1A Clay Street, 3A Clay Street, 5A Clay Street,  
7A West Clay Street, 9A West Clay Street,  
11A West Clay Street, and 13A West Clay Street.

The following Units are Type B Units:  
1B Clay Street, 3B Clay Street, 5B Clay Street,  
7B West Clay Street, 9B West Clay Street,  
11B West Clay Street, and 13B West Clay Street.

Type B Units are two-floor Units.

The purpose of these drawings is to show approximate dimensions, floor area and location of each unit, and the location and approximate dimensions of limited common elements.

I hereby certify that this drawing contains all of the information required by sub-section 47-228 of the CONN. GEN. STAT. (the Common Interest Ownership Act) relating to plans.

*[Signature]* 5285  
Signature R.A. License No.

The word "certify" is understood to be an expression of professional opinion by the Architect which is based on his best knowledge, information and belief. As such it constitutes neither a guarantee or a warranty.

**Clay Commons West Condominium**

Schedule A-4 to Declaration of  
Clay Commons West Condominium by  
Affordable Housing Ventures, Inc.

1 OF 2  
1/16/12

Condo Plan # 109

0 INCHES 1 2 3 4