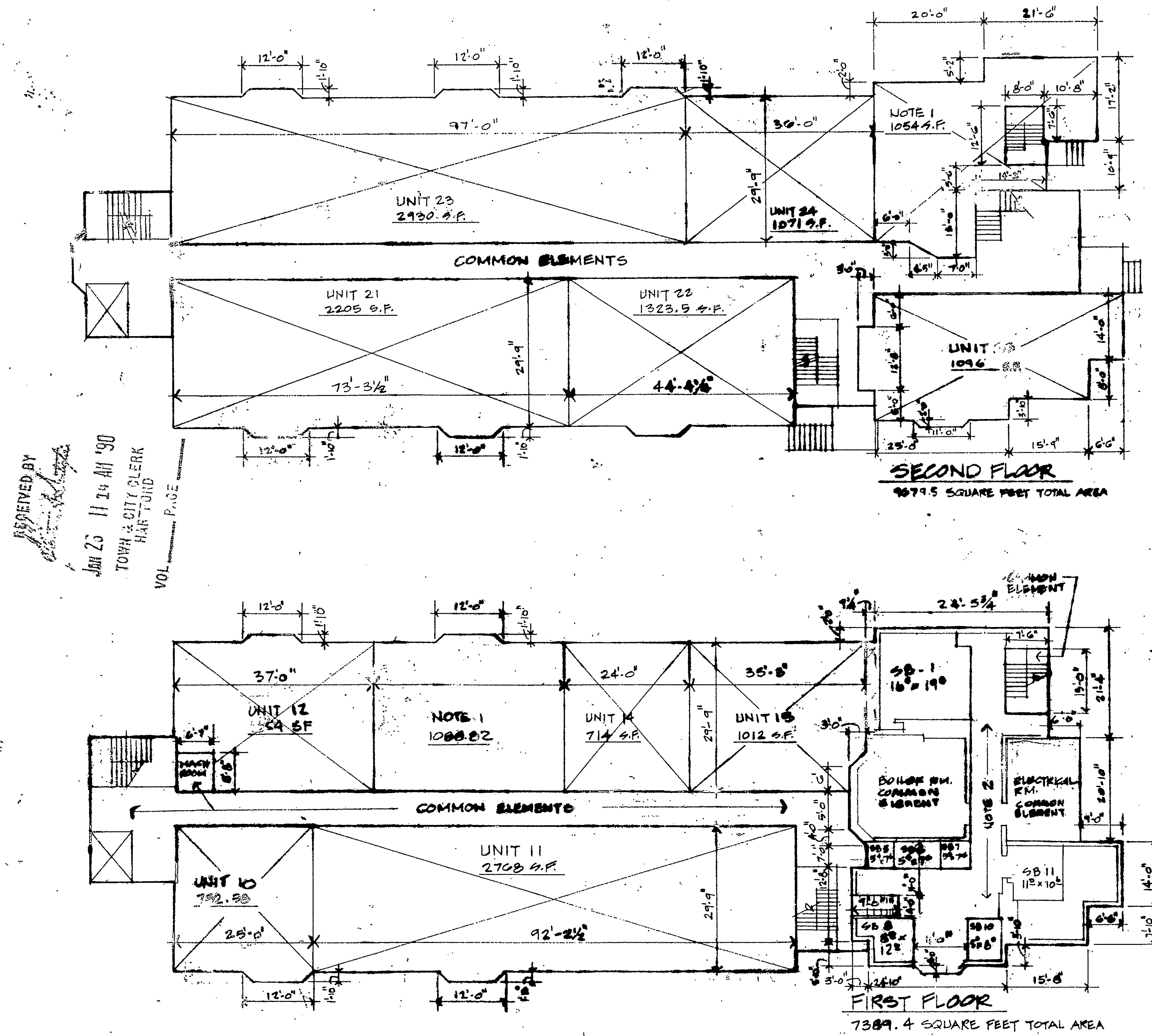


90

90-26



"Certain improvements which may, but need not be built by the Declarant as part of its Special Declarant Rights, in addition to any improvements shown, include non-bearing partitions, and walls, surface finishes and decorating; interior doors and windows; mechanical and electrical systems, including plumbing, heating, air conditioning and electrical chutes, flues, ducts, conduits, wires and other fixtures; shutters, awnings, window boxes, doorsteps, stoops; signs; accessory and related structures and fixtures; and improvements required by appropriate governmental authorities or utility companies, or which will enhance the building in the discretion of the Declarant. These improvements need not be built in any particular order or at any particular location in or as part of the building and will have dimensions consistent with their purposes. Please refer to Article VIII of the Declaration for limitations and reservations of these rights."

Notes:

1. "Development rights reserved in this area to create units, common elements and limited common elements."
2. "Development rights reserved in this area to create limited common elements."

Certification:

"I certify that these plans contain all the information required by Section 7-228 of the Connecticut General Statutes relating to plans."

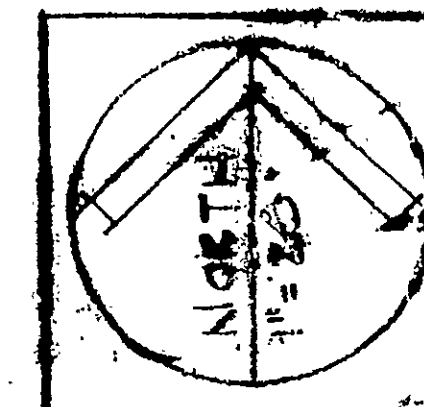
James E. Vance, Jr.

R.C.A. License No.

The word "certify" is an expression of professional opinion which is based on the architect's best knowledge, information and belief, and such it constitutes neither a guarantee or warranty, expressed or implied.

Exhibit 2-

Declaration of Woodland Medical Center by Woodland Street Associates, Inc., Hartford, Connecticut.



DATE	TIME	BY
12-28-88	9:40 AM	J.E.V.
1-3-89	9:40 AM	J.E.V.
2-17-89	11:30 AM	J.E.V.
5-10-89	4:25 PM	J.E.V.
5-24-89	8:30 AM	J.E.V.
7-15-89	1:15 PM	J.E.V.

WOODLAND MEDICAL CENTER
19 WOODLAND ST. HARTFORD, CT 06103

James E. Vance, Jr.
Architect
15 Capitol Square
Hartford, Connecticut 06103

A-1

