

RECEIVED BY

AUG 12 2 53 PM '81

TOWN & CITY OF

HARTFORD

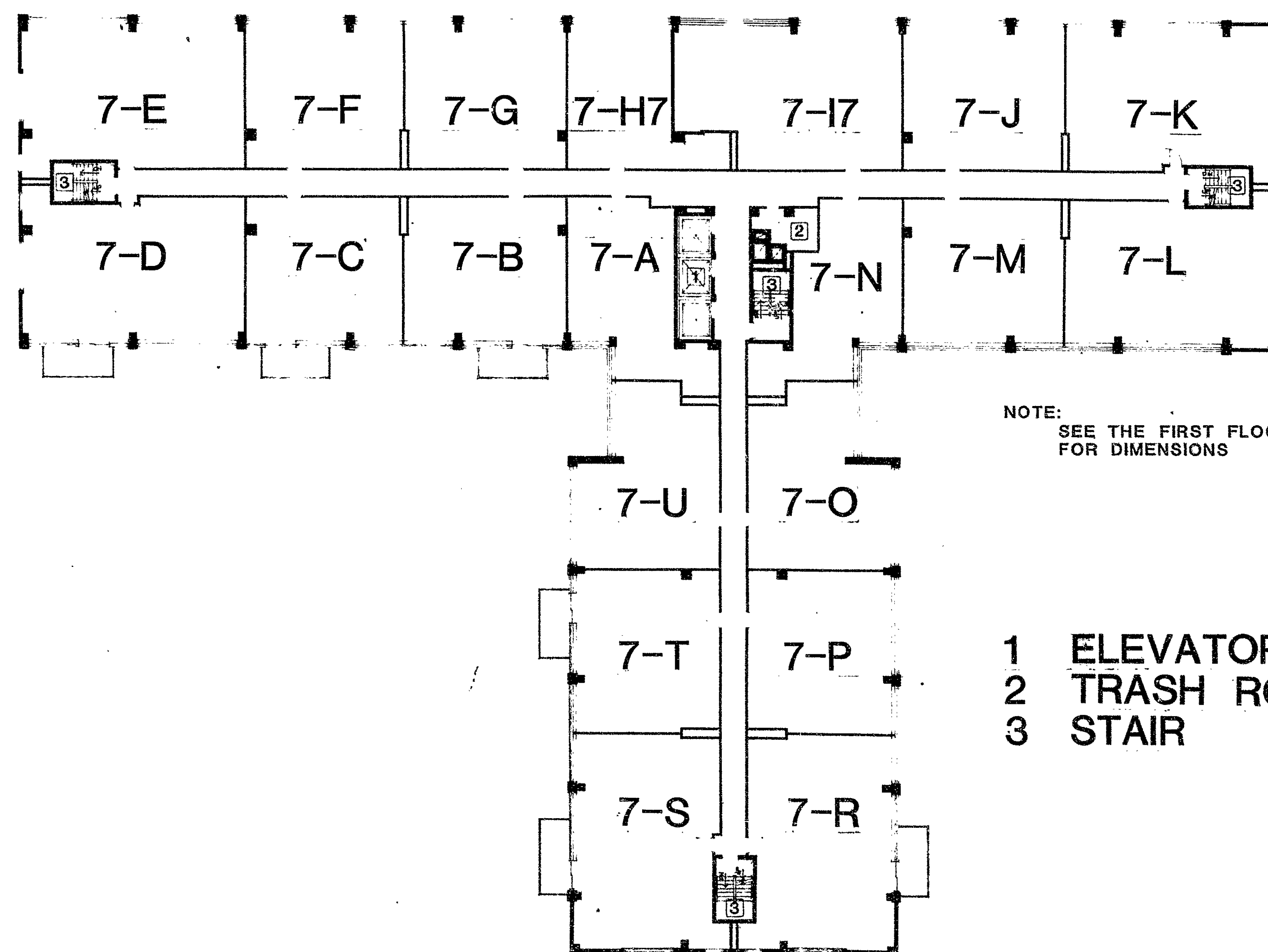
VOL PAGE

General Notes:

All elevations taken from
M.D.C. datum

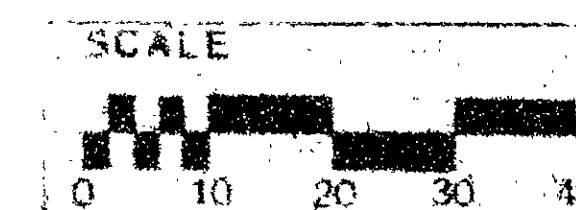
Each unit is separately
designated by adding the
floor on which it is located
as a prefix to the unit type.

Example: 5-T is a unit type
"T" located on the 5th Floor.



NOTE:
SEE THE FIRST FLOOR PLAN
FOR DIMENSIONS

1 ELEVATORS
2 TRASH ROOM
3 STAIR



SEVENTH FLOOR PLAN

FL. ELEV. 125.14'

CLG. ELEV. 133.14'

Certified to be an accurate copy of portions
of the approved plans on file with the
Town & City of Hartford in accordance
with Section 18-306 of the
Connecticut General Statutes.

Harvey M. White, Registered Architect #1560
State of Connecticut) s.s. Hartford
County of Hartford)
Subscribed and sworn to before me this 2nd
day of August, 1981.

Notary Public - My commission expires 3/31/81

TYPICAL CEILING HEIGHT
FOR THIS FLOOR
IS 8'-0"

**woodland
house
condominium**

31 woodland st.
hartford, ct.

1/4" = 1'-0"

2-9-81

PROJECT NO.

34-80

DRAWN BY

NHY

CHECKED BY

✓

**Kane & White
Architects**

THE EXCHANGE (203) 677-9111
275 FAIRBANKS AVE.
FARMINGTON, CONNECTICUT 06032

EXHIBIT C
Declaration of Condominium
Woodland House Condominium
31 Woodland Street
Hartford, Connecticut
Sheet 15 of 20

0 INCHES 1 2 3 4