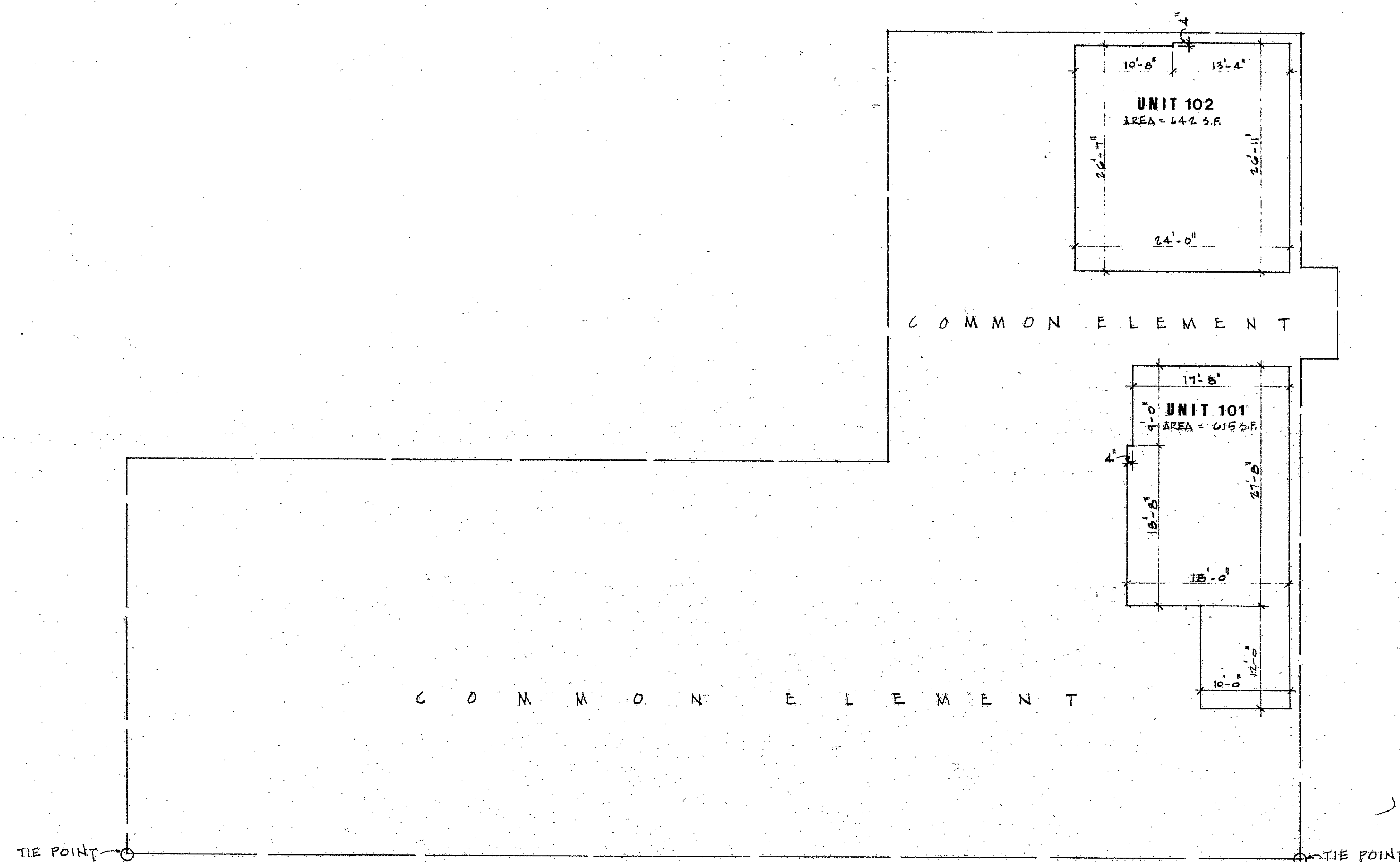


RECEIVED BY  
APR 6 8 37 AM '81  
TOWN & CITY CLERK  
HARTFORD  
VOL. PAGE  
47162



(B)  
P88

THE PURPOSE OF THESE PLANS IS TO SHOW THE APPROXIMATE DIMENSIONS, FLOOR AREAS AND LOCATION OF EACH UNIT AND THE RELATIVE LOCATION OF THE COMMON ELEMENTS. INTERIOR BEARING WALLS AND BEARING PARTITIONS ARE COMMON ELEMENTS ALTHOUGH THEY MAY NOT BE SHOWN HEREON. SEE ARTICLE II OF DECLARATION OF CONDOMINIUM BY ASHWOOD CONDOMINIUM ASSOCIATION, INC.

THE DIMENSIONS SHOWN ON THESE PLANS HAVE BEEN TAKEN FROM THE ORIGINAL DESIGN PLANS OF THE BUILDING AND HAVE NOT BEEN VERIFIED IN THE FIELD BY ACTUAL MEASUREMENTS.

NOTES:

TOP OF UNFINISHED SURFACE OF FIRST FLOOR IS SHOWN ON PLAN REFERRED TO IN EXHIBIT "A" TO THE DECLARATION. UNFINISHED GROUND FLOOR SURFACE ELEVATION IS 9.55 FEET BELOW UNFINISHED SURFACE OF FIRST FLOOR ELEVATION AND UNFINISHED CEILING SURFACE ELEVATION IS 2.25 FEET BELOW UNFINISHED SURFACE OF FIRST FLOOR ELEVATION.

BOUNDARY LEGEND

Unit  
Common Element  
Limited Common Element

VERIFICATION

STATE OF CONNECTICUT  
COUNTY OF HARTFORD ) SS: HARTFORD *March 19, 1980.*

PERSONALLY APPEARED GLENDON R. MAYO, SIGNER OF THE FOREGOING CERTIFICATE AND BEING DULY SWORN, MADE SOLEMN OATH TO THE TRUTH OF THE STATEMENT TO WHICH HIS NAME IS SUBSCRIBED.

*2520X*  
COMMISSIONER OF THE SUPERIOR COURT

CERTIFIED TO BE AN ACCURATE COPY OF PORTIONS OF THE APPROVED PLANS ON FILE WITH THE CITY OF HARTFORD BUILDING OFFICIAL.

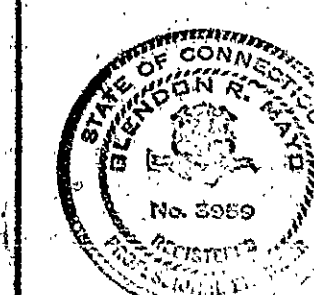
*Glendon Mayo, P.E.* *March 19, 1980*  
GLENDON R. MAYO, P.E. DATE

THE ASHWOOD, A CONDOMINIUM

EXHIBIT D TO DECLARATION  
OF ASHWOOD ASSOCIATES  
173 ASHLEY STREET  
HARTFORD, CONNECTICUT

SCHEMATIC BUILDING PLANS

THE ASHWOOD, A CONDOMINIUM



GLENDON R. MAYO, P.C.  
ONE VAN DYKE AVENUE, HARTFORD, CONNECTICUT

VERIFY ALL DIMENSIONS AT SITE.  
DO NOT SCALE DRAWINGS

PROJECT NO.  
C80-13Z

DATE  
MAR. 18, 1981

DWG. NO.  
1

SCALE:  
0' 5' 10'

*Condo # 47*

0 INCHES 1 2 3 4